

How to install a driver in Windows IoT Core

Author: RogerTsai

Release date: 2020/05/04

Here are some guidelines on how to install a driver in Windows IoT Core form command line.

Configuration:

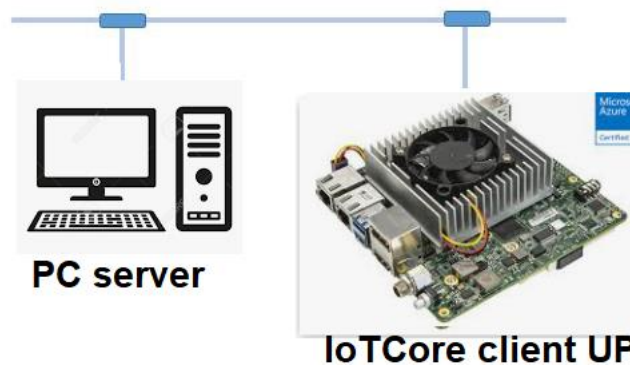
Model: All UP series, here's an UPX example

OS: Windows 10 IoT core (ver. 10.0.17763.253)

BIOS: UPW1AM15

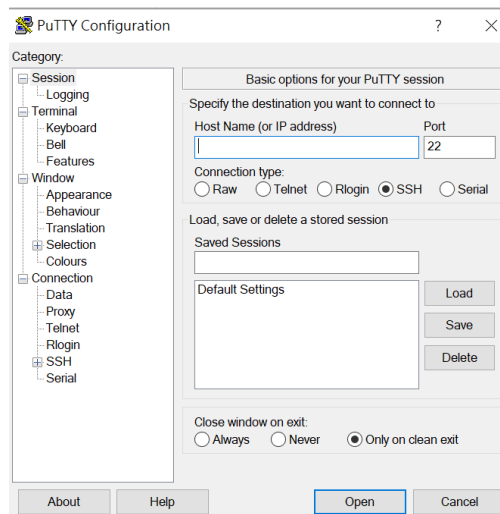
Set up a PC for remote access

The network diagram of our setting PC and IoTCore UP both connect to the same Network Domain.



We running Putty and connecting to a IoTCore UP, to use ssh connection and install device driver via command line, and Putty is a free utility. It can be downloaded from the following link at

<https://www.chiark.greenend.org.uk/~sgtatham/putty/latest.html>



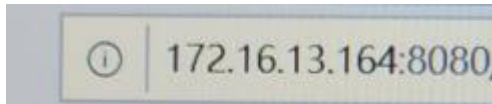
Operation Instruction / Deploy a WiFi driver to Windows IoT Core

The installation procedure is divided into two parts: Upload driver to IoTCore and remote control a IoTCore device to install the device driver for your drive.

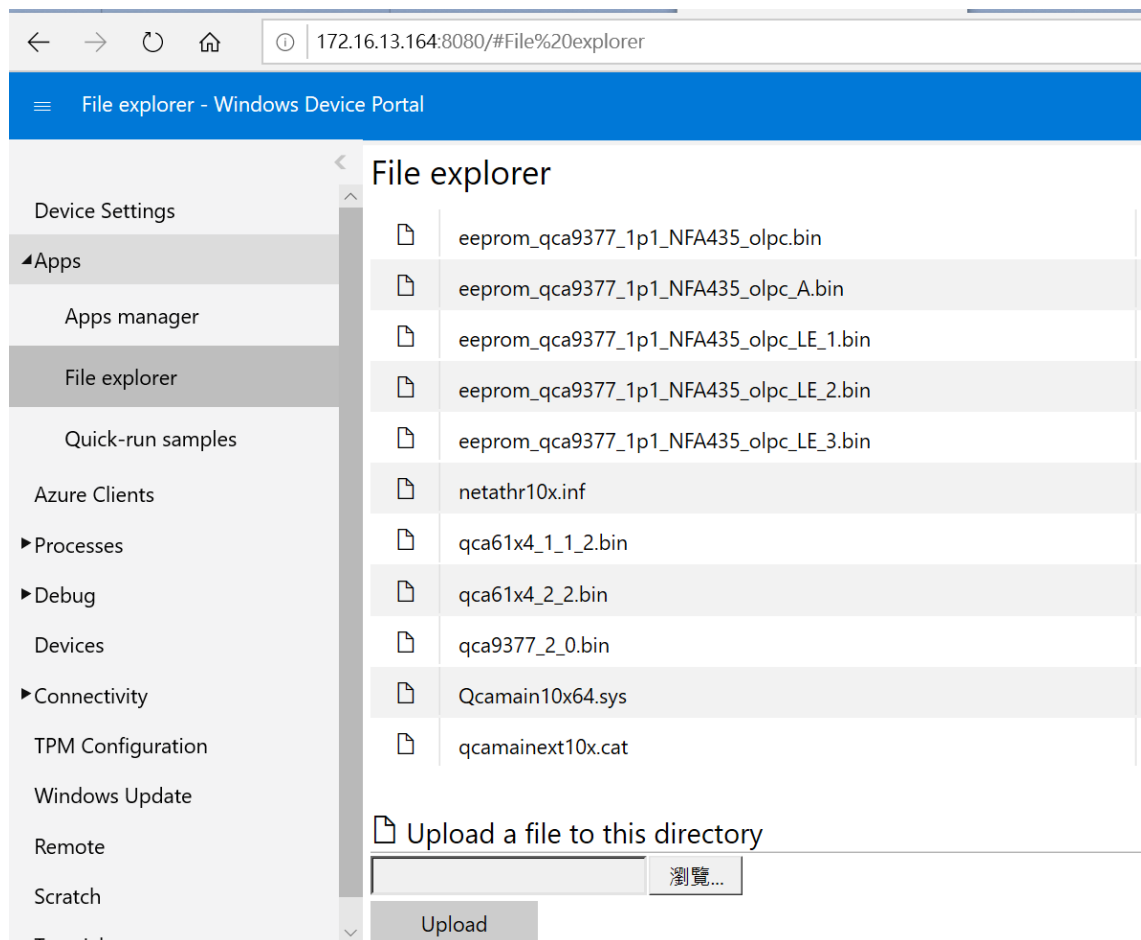
<To Upload driver to IoTCore, use the following procedure by PC side>

1. Open a web page just with the IP address:8080.

The example is shown below if the IoTCore IP address is 172.16.13.164

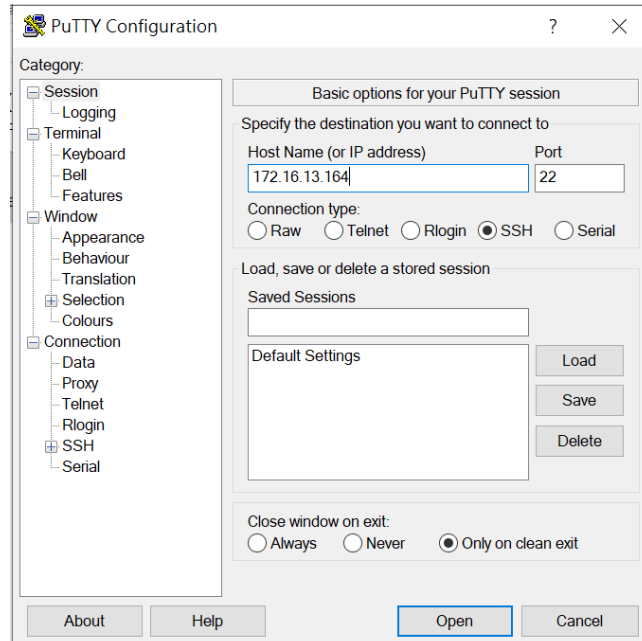


2. Enter “Administrator” and password “p@ssw0rd” to access IoTCore
3. When logging in to IoTCore, go with **Apps / File explore / Documents**, select all driver file (.bin / .inf / .sys / .cat), and then click the Upload button on the web as shown below

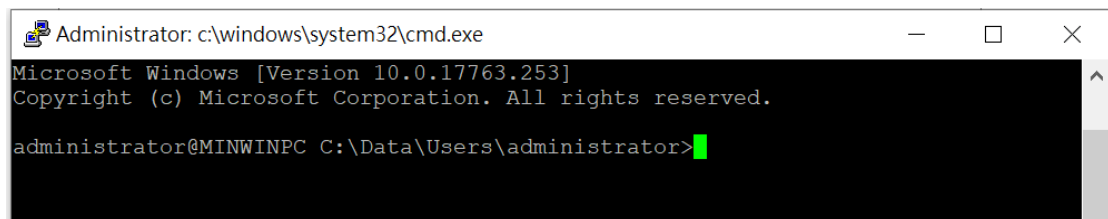
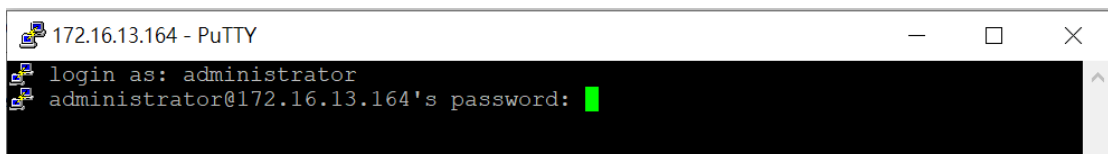


<Remote control a IoTCore device to install the device driver, use the following procedure by PC side>

1. Open a Putty just with the IP address, and click the Open button



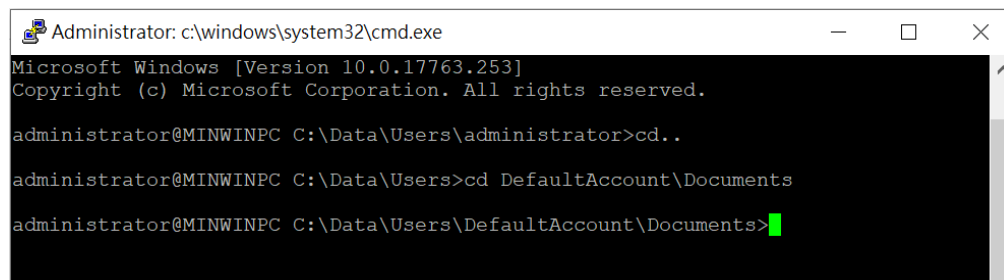
2. Enter "Administrator" and password "p@ssw0rd" to use this IoTCore Logging & Successful login as shown below



3. To find the driver file, you must find is location on IoTCore using the following commands

```
>>cd..
```

```
>>cd DefaultAccount\Documents
```



- Go with “pnputil -i -a <name.inf>” and press Enter to add driver package on IoTCore.

Here's an example of adding Atheros WiFi driver into IoTCore

```
administrator@MINWINPC C:\Data\Users\DefaultAccount\Documents>pnputil -i -a netathr10x.inf
Microsoft PnP Utility

***** WARNING *****
This pnputil command should only be used for development/testing purposes.

Driver package INF files should be added/updated into the offline OS image
using the supported offline package deployment process in order to ensure
that they are properly configured and integrated into the Windows OS state.

Updating driver package INF files from within the runtime environment of
this OS product may lead to unexpected OS state conflicts, resulting in the
inability to apply future updates to core OS components and/or drivers on
retail/consumer systems.
***** WARNING *****
Processing inf :          netathr10x.inf
Successfully installed the driver.
Driver package added successfully.
Published name :          oem0.inf

Total attempted:          1
Number successfully imported: 1

administrator@MINWINPC C:\Data\Users\DefaultAccount\Documents>
```

The Atheros QCNFA364A Wi-Fi is working after driver installation

