



Quick Start Guide

Cable Kit

P/N: 9651EDGE05

User Manual for assembling Cable Kit for UP Xtreme Edge
Computing System with Whiskey Lake CPU

| | | |
|----------------------|------------------|--------------|
| Revision: | 02 | |
| Update Date: | 14 February 2020 | |
| Prepared For: | UP Shop User | AAEON |
| Prepared By: | WendyLee 李宏芸 | AAEON Europe |

Revision History

The following table contains the information regarding the history and revisions of this living document.

| Version | Date | Contributor | Changes | Description |
|---------|------|-------------|---------|-------------|
| N/A | | | | |
| | | | | |
| | | | | |
| | | | | |
| | | | | |

Document Attributes

The following table contains the list of files that are associated with this living document.

| Filename | Description |
|----------|-------------|
| N/A | |
| | |
| | |
| | |
| | |

Package List

| Item NO. | Description | Quantity |
|------------|------------------------------------|----------|
| 1703401600 | MCU Cable,160mm | 1 |
| 1703401301 | GPIO Cable,40Pin Hat,130mm | 1 |
| 1709103100 | Debug Cable,310mm | 1 |
| 1701100180 | COM Cable,150mm | 2 |
| S1A5004050 | Screw for MCU cable and GPIO cable | 4 |
| S21D305011 | Screw for COM Cable | 4 |
| S1ZC002110 | Screw for Debug Cable | 1 |

S1A5004050



S21D305011



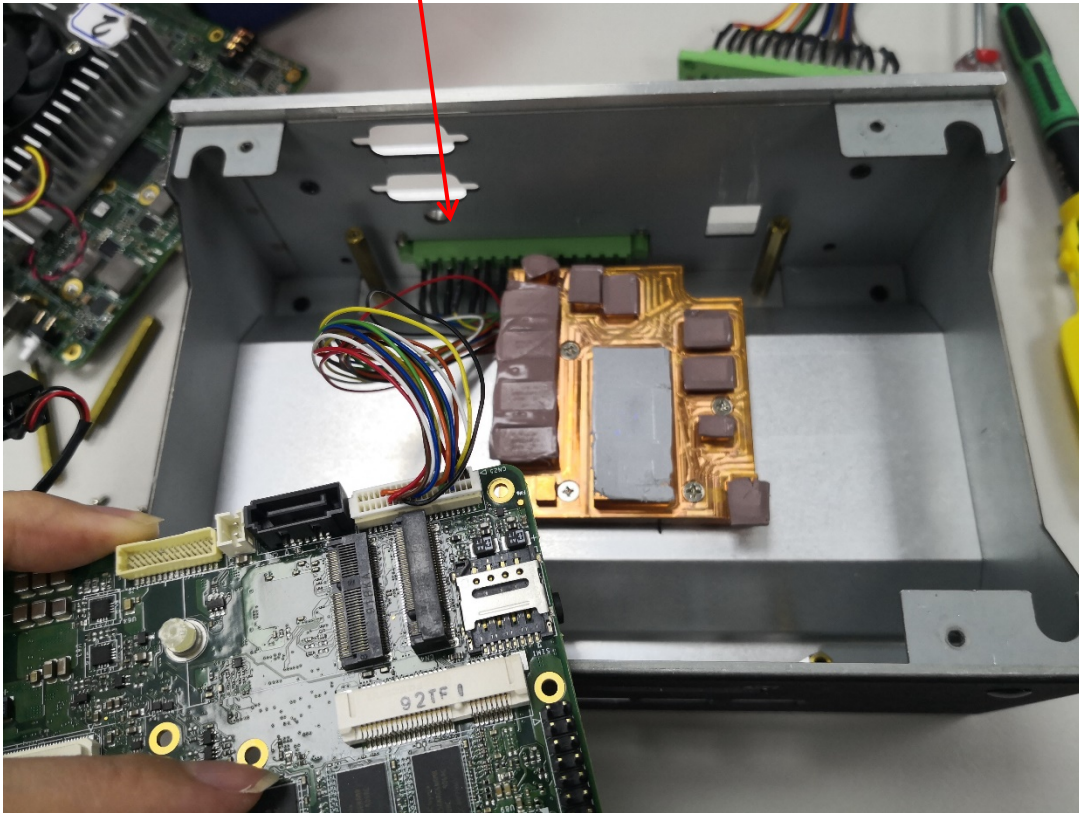
S1ZC002110



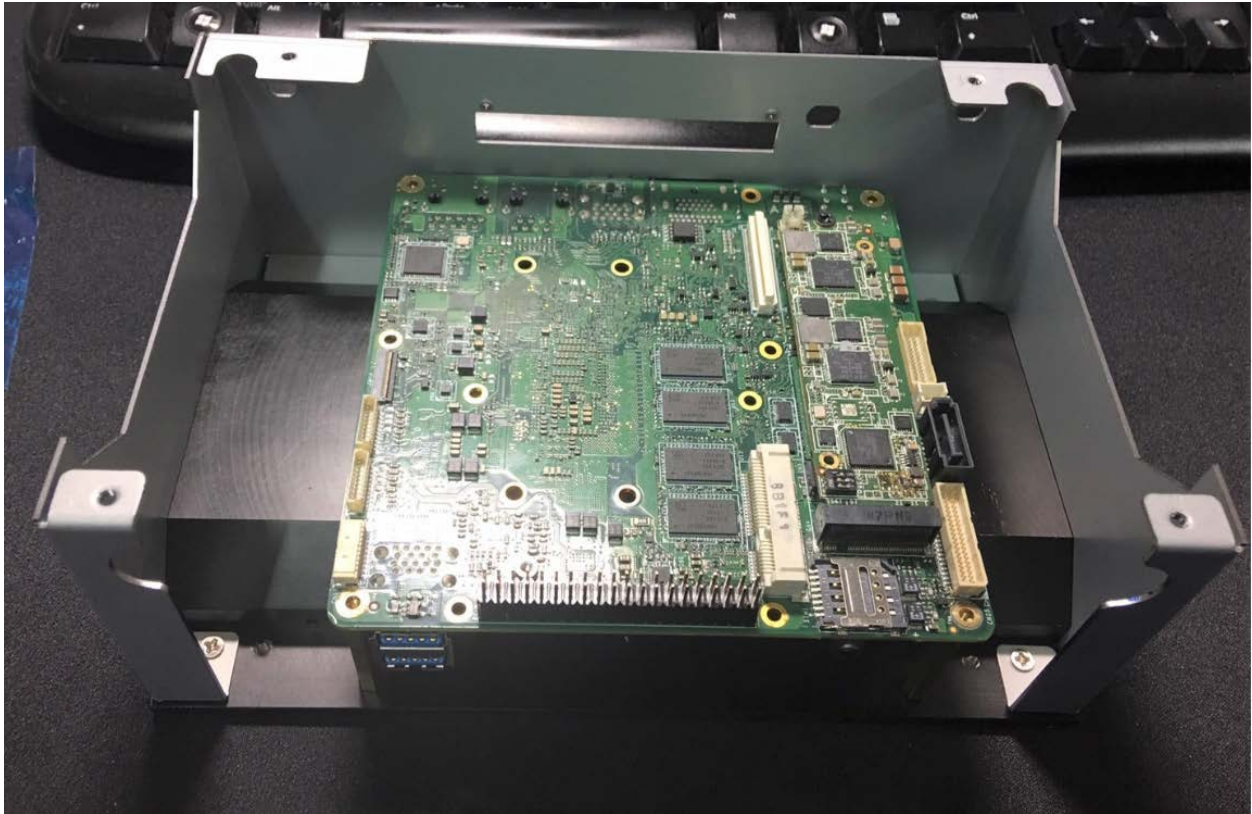
CABLE Assembly STEP

1. Take the MCU cable(1703401600) to go through the chassis and connect the pin head to CN25 (STM32 connector)

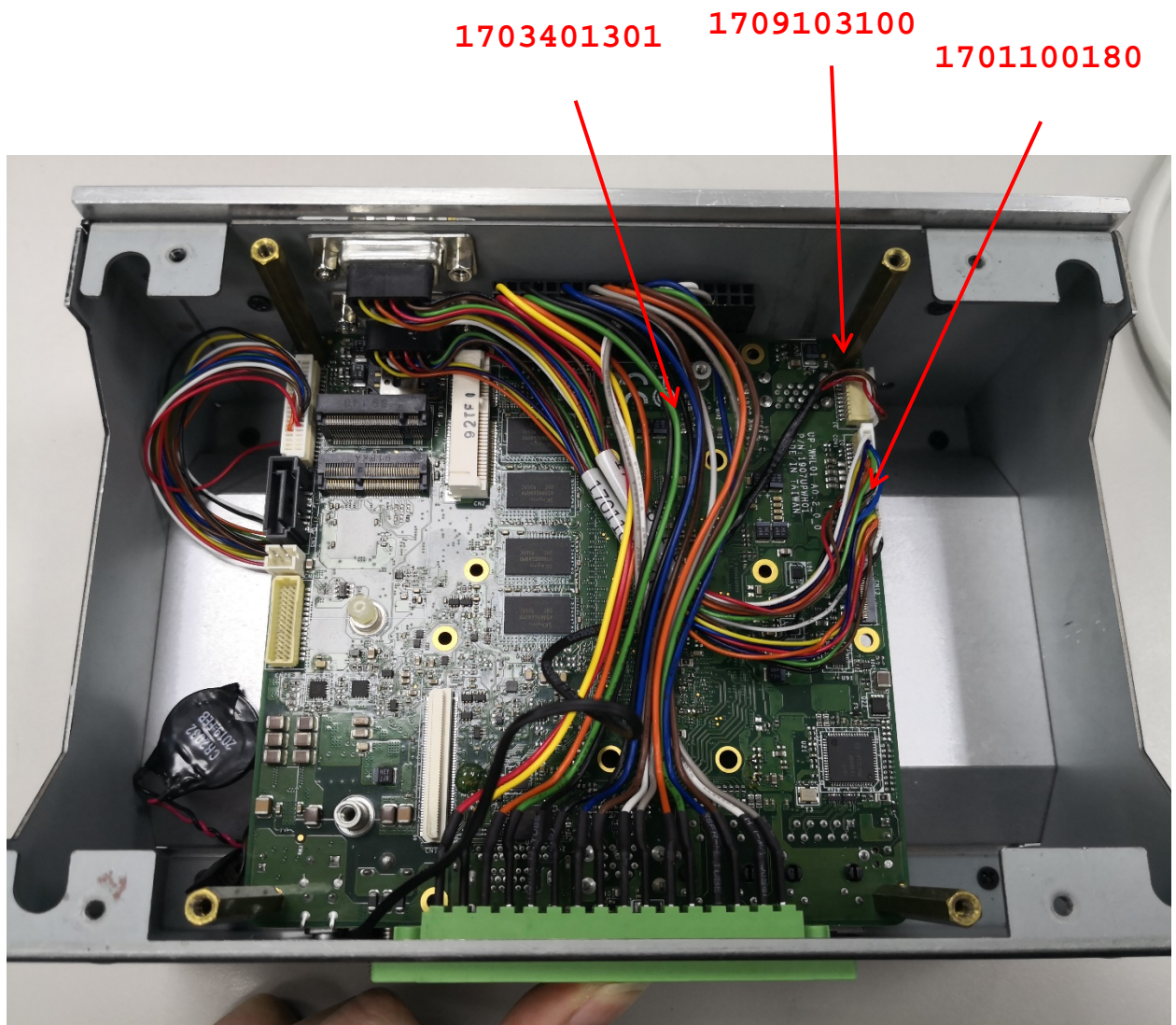
1703401600



2. Take the PCB and turn the CPU side downward and put it in the chassis



3. Take another GPIO cable (1703401301) to go through the Chassis and connect the pin head to the 40pin HAT
4. Take the two com ports cables (1701100180) and connect the pin head to COM1 and COM2
5. Take debug port cable (1709103100) and connect the pin head to CN16



6.screw the both COM cables and MCU cable on the chassis.



S1A5004050

S21D305011

6.screw the GPIO cable and screw the debug cable with the ring(S1ZC002110) on the chassis.

