

# UP Xtreme Smart Surveillance

## Quick users guide

UP Xtreme Smart Surveillance is a solution which reforms the traditional CCTV into an intelligent surveillance by applying deep learning and video analytics technologies. A smart surveillance understands what it sees and reacts on it; it monitors an area by creating a virtual fence, generates heatmap and counts people flow to give insights. All of these features come in one box—UP Xtreme Smart Surveillance. An AI-enabled NVR solution, it works proactively on the video stream and supports up to 32 cameras simultaneously.

## What's in your kit



UP Xtreme Edge Compute  
Installed with Smart Surveillance  
Software Package



Power Supply



EU/US Power Cords

You'll need the following, not included:

- A monitor with either HDMI or DisplayPort
- USB keyboard and mouse
- Internet connection through either ethernet or Wi-Fi dongle (purchased separately)
- Switch for Camera connection

### Caution:

1. Depends on the quantity and type of camera you want to connect; you may require different kinds of switch.
2. Please make sure your camera is listed within Milestone verified device list in following link.  
<https://www.milestonesys.com/community/business-partner-tools/supported-devices/xprotect-corporate-and-xprotect-expert/>

For more information about your UP board, software, accessories and peripherals, please visit  
[www.up-community.org](http://www.up-community.org)

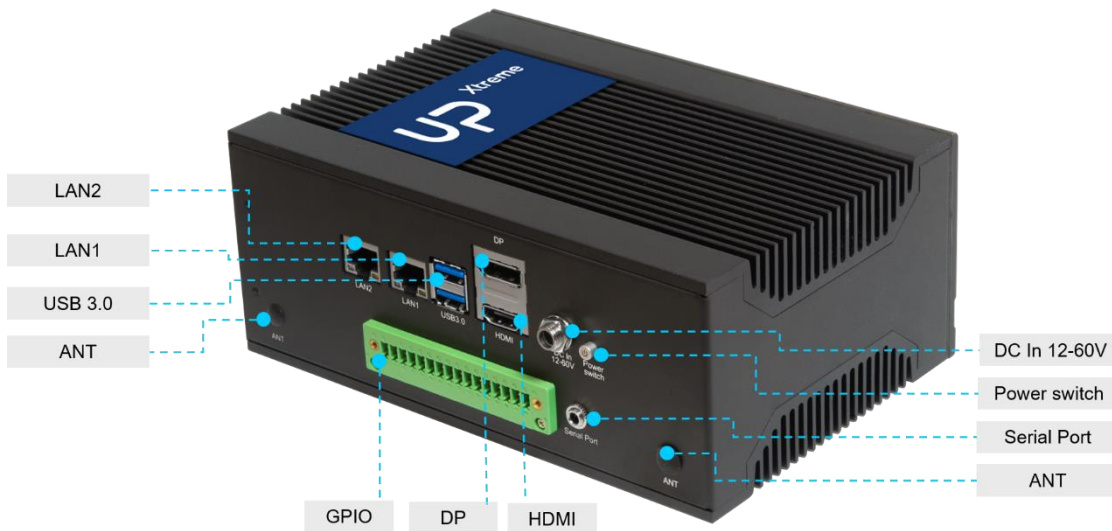


bridge  
the gap

# UP Xtreme Smart Surveillance

## Quick users guide

### 1 Your UP Xtreme Smart Surveillance



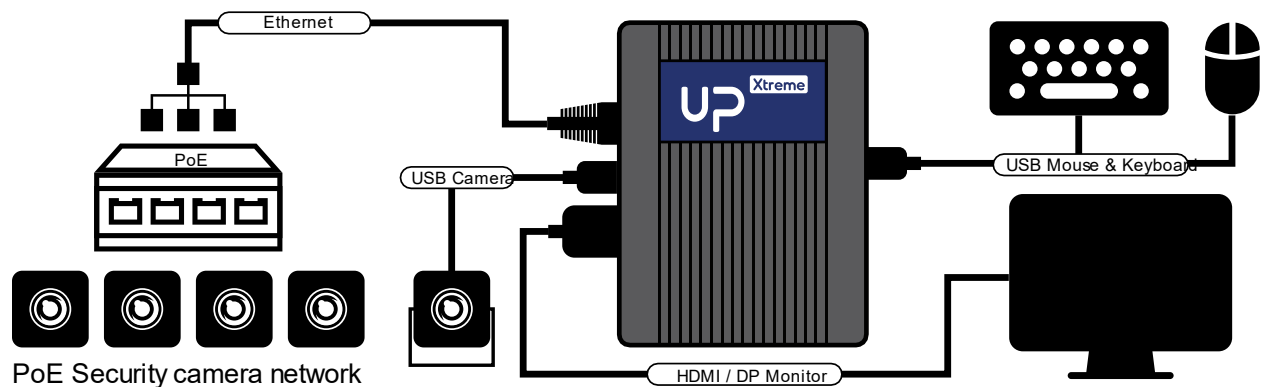
For more information about your UP board, software, accessories and peripherals, please visit [www.up-community.org](http://www.up-community.org)

## 2 Power on

Please view following chart for connectivity overview.

1. Make sure to connect monitor before powering up – if the board is powered up before connecting a monitor, you may need to power cycle the board to see the display
2. Connect power supply to the board and plug in power supply to an outlet

**Caution:** this is a high-performance solution and may get hot during operation.

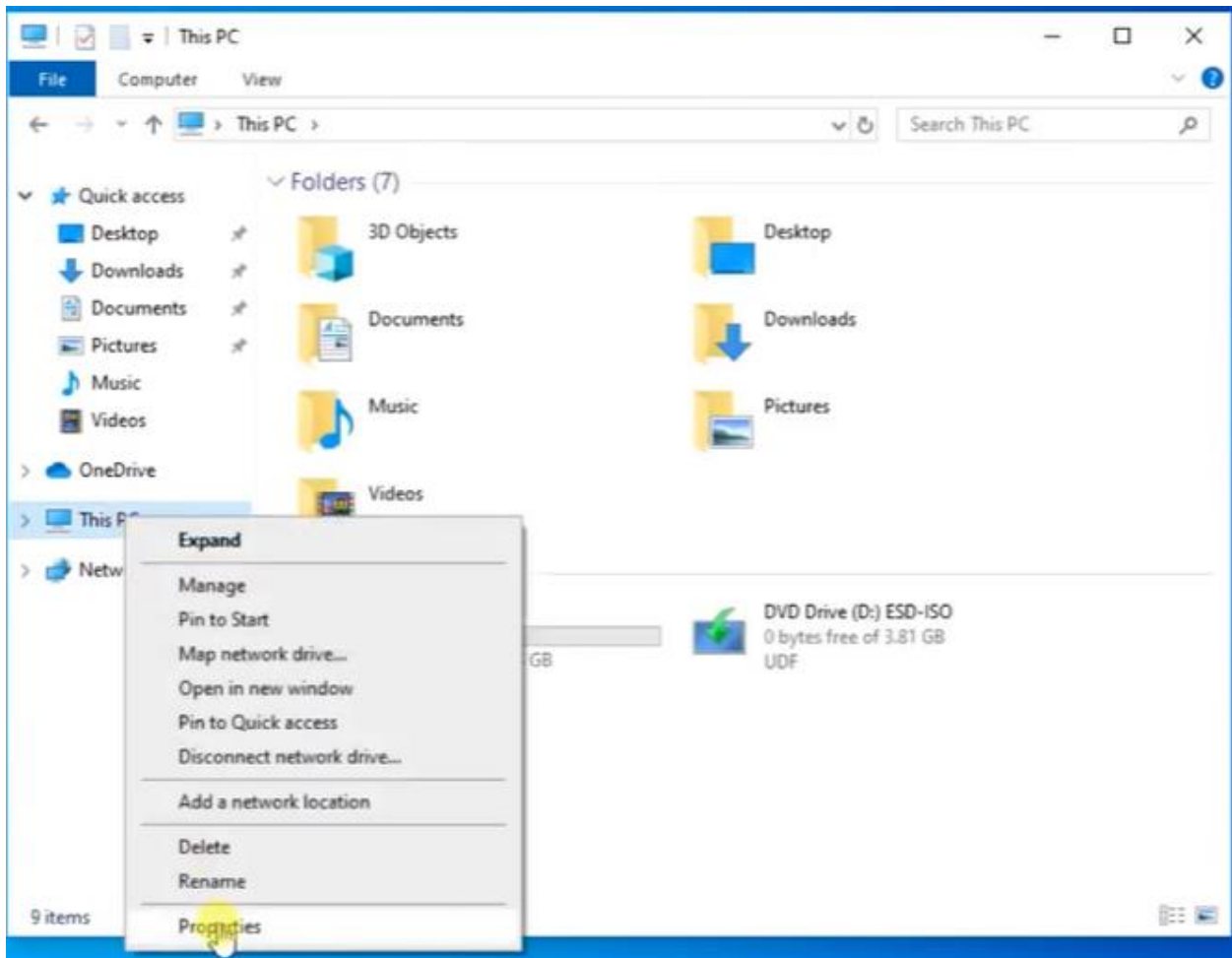


## 3 Log in

Boot up your Windows 10 IOT Enterprise OS and set your own credentials for your UP Xtreme Smart Surveillance Solution.

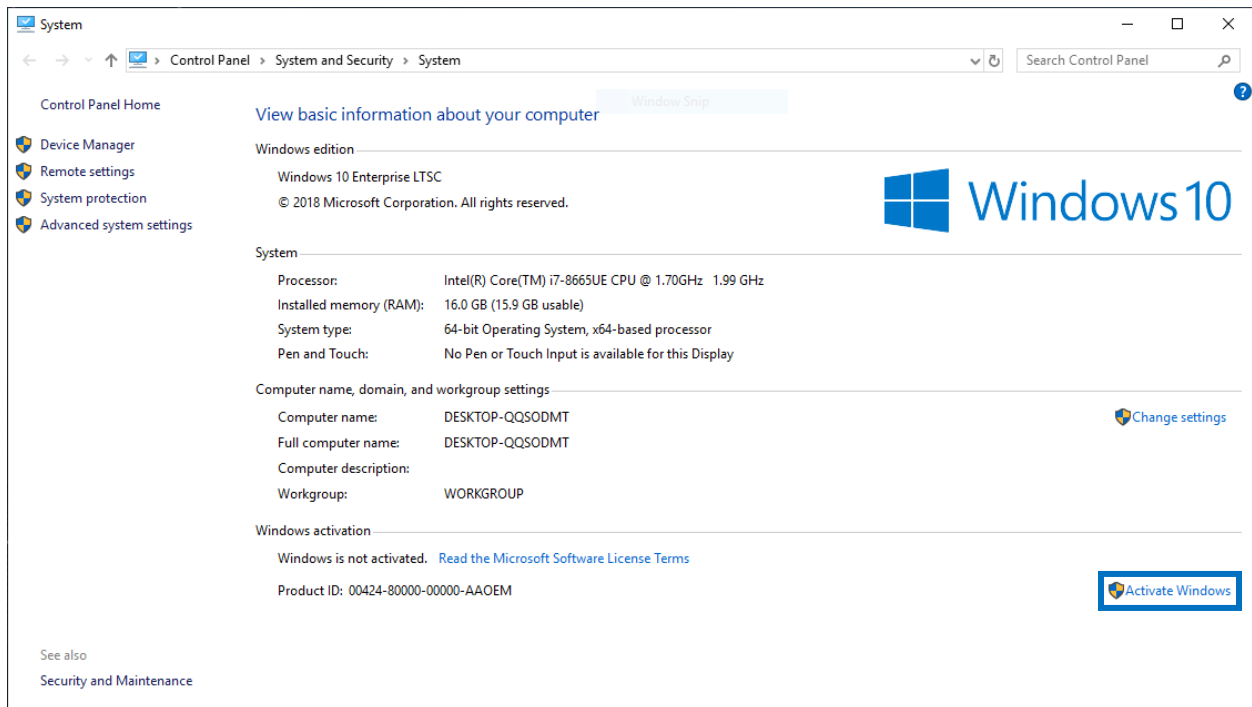
## 4 Windows License Activation

- i. Right click on "This PC", then click "Properties"

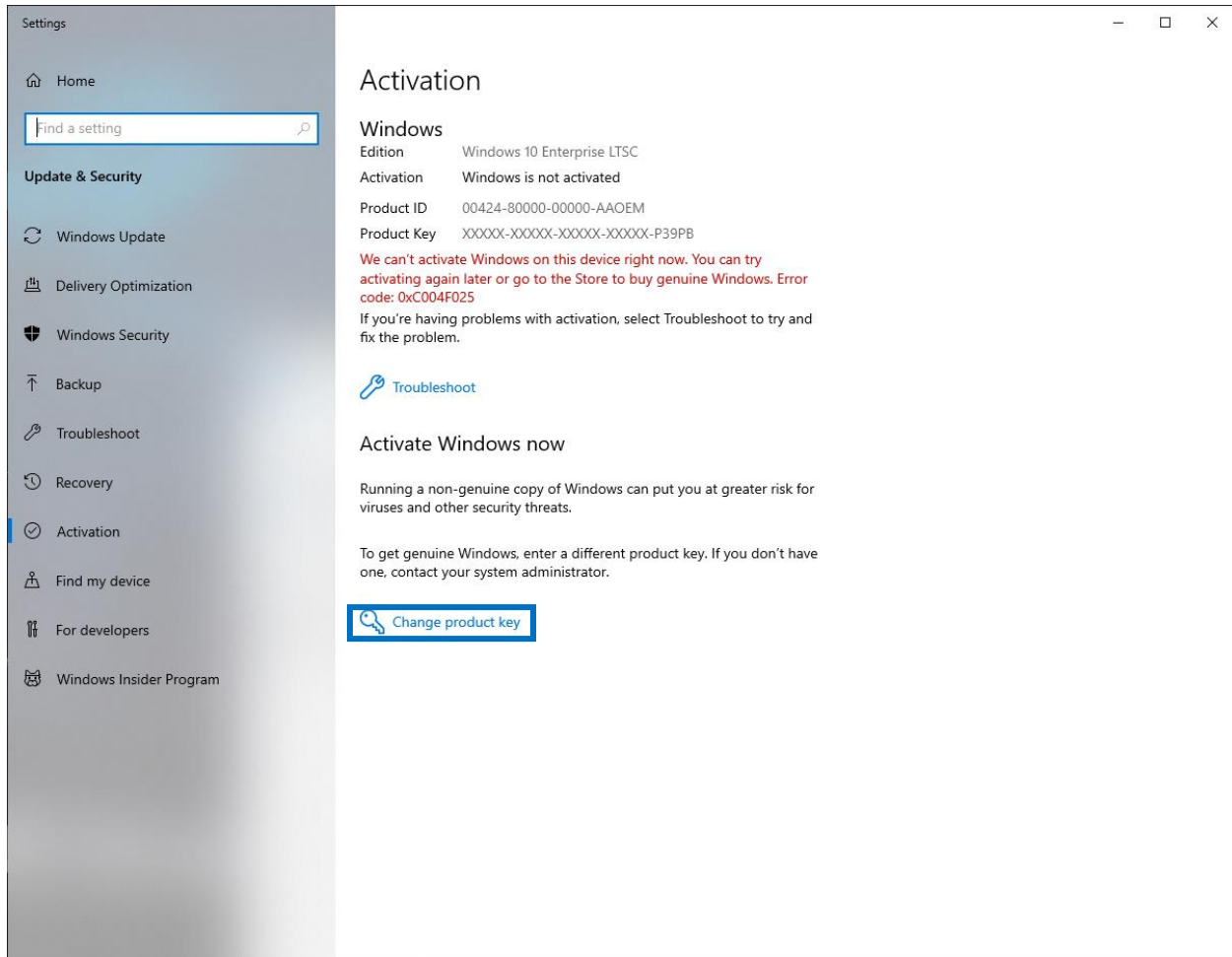


For more information about your UP board, software, accessories and peripherals, please visit  
[www.up-community.org](http://www.up-community.org)

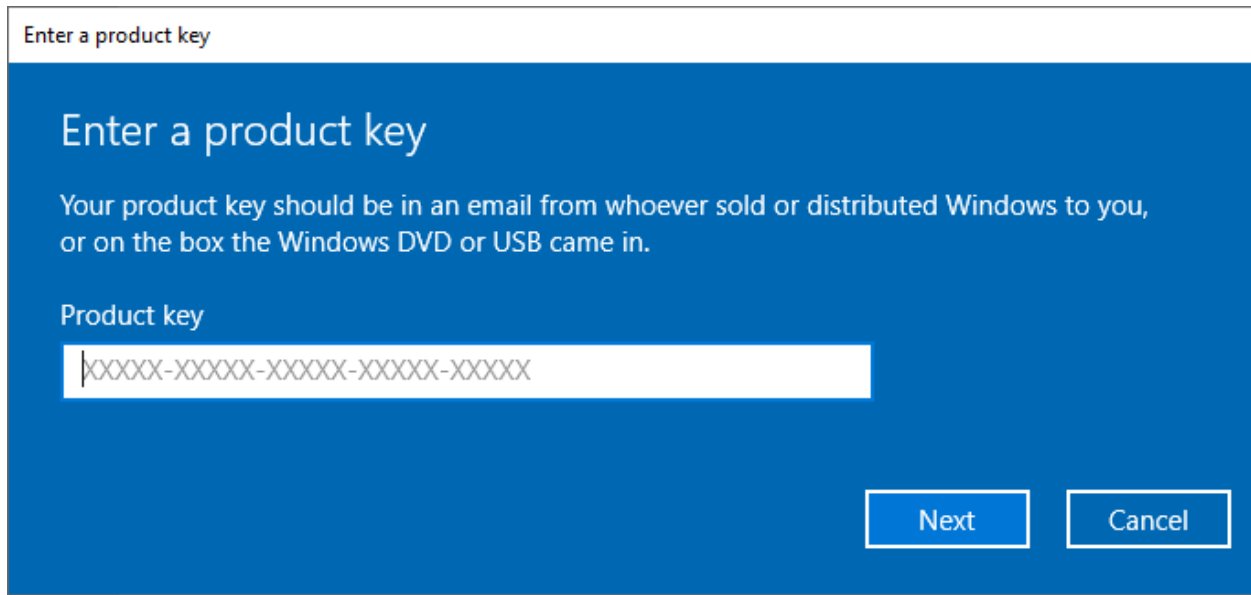
- ii. Click on “Activate Windows”



- iii. Click on “Change product key”



- iv. Enter Windows Product Key Here, then click "Next"



The screenshot shows a Windows dialog box titled "Enter a product key". The background is blue with white text. It contains the following elements:

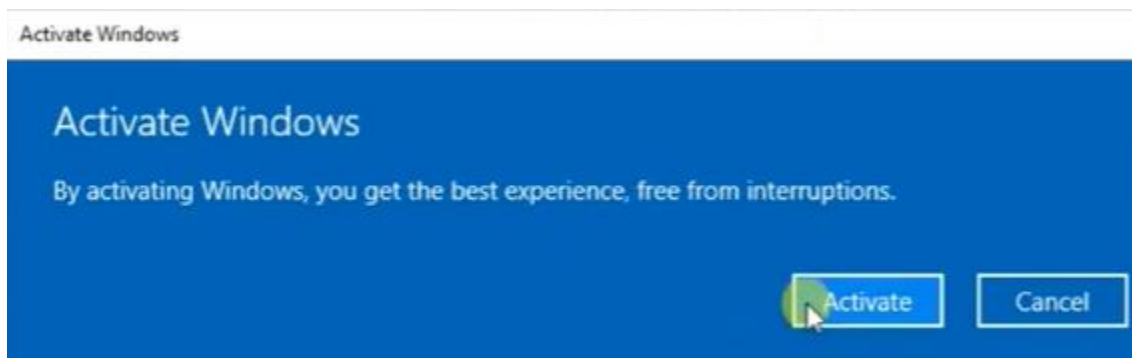
- Title bar: "Enter a product key"
- Section header: "Enter a product key"
- Text: "Your product key should be in an email from whoever sold or distributed Windows to you, or on the box the Windows DVD or USB came in."
- Label: "Product key"
- Input field: A white text box containing a placeholder "XXXXX-XXXXX-XXXXX-XXXXX-XXXXX".
- Buttons: "Next" and "Cancel" buttons at the bottom right.

Windows Product Key:



A large, empty, rounded rectangular box with a blue border, intended for the user to enter their Windows Product Key.

- v. Click on "Activate"



The screenshot shows a Windows dialog box titled "Activate Windows". The background is blue with white text. It contains the following elements:

- Title bar: "Activate Windows"
- Section header: "Activate Windows"
- Text: "By activating Windows, you get the best experience, free from interruptions."
- Buttons: "Activate" and "Cancel" buttons at the bottom right. A mouse cursor is pointing at the "Activate" button.

For more information about your UP board, software, accessories and peripherals, please visit [www.up-community.org](http://www.up-community.org)



# UP Xtreme Smart Surveillance

## Quick users guide

### 5 Get started

Open the video tutorial link as below. Follow the instructions to finish initial setting and start to play with your UP Xtreme Smart Surveillance.

Get started video tutorial: <https://vimeo.com/showcase/uxss>

There are 4 parts within the video tutorial. Please make sure you have watched Part 1 to Part 3 for setting up your solution.

- Part 1(First Boot, prepare XPROTECT)
- Part 2(XPROTECT Smart Client)
- Part 3(Prepare SAIMOS, add channels)
- Part 4(Face & Scrambler channels): additional license required for adding these channels

For more information about your UP board, software, accessories and peripherals, please visit  
[www.up-community.org](http://www.up-community.org)



## Safety Precautions

Please read the following safety instructions carefully. It is advised that you keep this manual for future references

1. All cautions and warnings on the device should be noted.
2. Make sure the power source matches the power rating of the device.
3. Position the power cord so that people cannot step on it. Do not place anything over the power cord.
4. Always completely disconnect the power before working on the system's hardware.
5. No connections should be made when the system is powered as a sudden rush of power may damage sensitive electronic components.
6. If the device is not to be used for a long time, disconnect it from the power supply to avoid damage by transient over-voltage.
7. Always disconnect this device from any power supply before cleaning.
8. While cleaning, use a damp cloth instead of liquid or spray detergents.
9. Make sure the device is installed near a power outlet and is easily accessible.
10. Keep this device away from humidity.
11. Place the device on a solid surface during installation to prevent falls.
12. Do not cover the openings on the device to ensure optimal heat dissipation.
13. Watch out for high temperatures when the system is running.
14. Do not touch the heat sink or heat spreader when the system is running
15. Never pour any liquid into the openings. This could cause fire or electric shock.
16. As most electronic components are sensitive to static electrical charge, be sure to ground yourself to prevent static charge when installing the internal components. Use a grounding wrist strap and contain all electronic components in any static-shielded containers.
17. If any of the following situations arises, please the contact our service personnel:
  - I. Damaged power cord or plug
  - II. Liquid intrusion to the device
  - III. Exposure to moisture
  - IV. Device is not working as expected or in a manner as described in this manual
  - V. The device is dropped or damaged
  - VI. Any obvious signs of damage displayed on the device
18. **DO NOT LEAVE THIS DEVICE IN AN UNCONTROLLED ENVIRONMENT WITH TEMPERATURES BEYOND THE DEVICE'S PERMITTED STORAGE TEMPERATURES (-20°C~70°C) TO PREVENT DAMAGE.**

For more information about your UP board, software, accessories and peripherals, please visit

[www.up-community.org](http://www.up-community.org)

## FCC Statement

**Warning!**



This device complies with Part 15 FCC Rules. Operation is subject to the following two conditions: (1) this device may not cause harmful interference, and (2) this device must accept any interference received including interference that may cause undesired operation.

**Caution:** There is a danger of explosion if the battery is incorrectly replaced. Replace only with the same or equivalent type recommended by the manufacturer. Dispose of used batteries according to the manufacturer's instructions and your local government's recycling or disposal directives.

**Attention:** Il y a un risque d'explosion si la batterie est remplacée de façon incorrecte. Ne la remplacer qu'avec le même modèle ou équivalent recommandé par le constructeur. Recycler les batteries usées en accord avec les instructions du fabricant et les directives gouvernementales de recyclage.

## China RoHS Requirements (CN)

产品中有毒有害物质或元素名称及含量

AAEON Main Board/ Daughter Board/ Backplane

部件名称	有毒有害物质或元素					
	铅 (Pb)	汞 (Hg)	镉 (Cd)	六价铬 (Cr(VI))	多溴联苯 (PBB)	多溴二苯醚 (PBDE)
印刷电路板 及其电子组件	○	○	○	○	○	○
外部信号 连接器及线材	○	○	○	○	○	○
<p>O: 表示该有毒有害物质在该部件所有均质材料中的含量均在 SJ/T 11363-2006 标准规定的限量要求以下。</p> <p>X: 表示该有毒有害物质至少在该部件的某一均质材料中的含量超出 SJ/T 11363-2006 标准规定的限量要求。</p> <p>备注: 此产品所标示之环保使用期限, 系指在一般正常使用状况下。</p>						

## China RoHS Requirements (CN)

Poisonous or Hazardous Substances or Elements in Products

AAEON Main Board/ Daughter Board/ Backplane

Component	Poisonous or Hazardous Substances or Elements					
	Lead (Pb)	Mercury (Hg)	Cadmium (Cd)	Hexavalent Chromium (Cr(VI))	Polybrominated Biphenyls (PBB)	Polybrominated Diphenyl Ethers (PBDE)
PCB & Other Components	○	○	○	○	○	○
Wires & Connectors for External Connections	○	○	○	○	○	○
<p>O: The quantity of poisonous or hazardous substances or elements found in each of the component's parts is below the SJ/T 11363-2006-stipulated requirement.</p> <p>X: The quantity of poisonous or hazardous substances or elements found in at least one of the component's parts is beyond the SJ/T 11363-2006-stipulated requirement.</p> <p>Note: The Environment Friendly Use Period as labeled on this product is applicable under normal usage only</p>						

For more information about your UP board, software, accessories and peripherals, please visit  
[www.up-community.org](http://www.up-community.org)