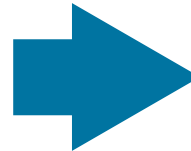
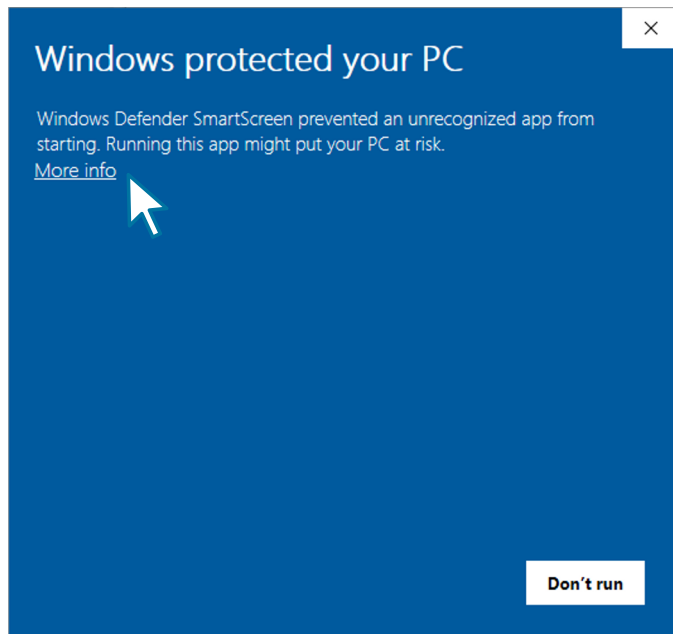
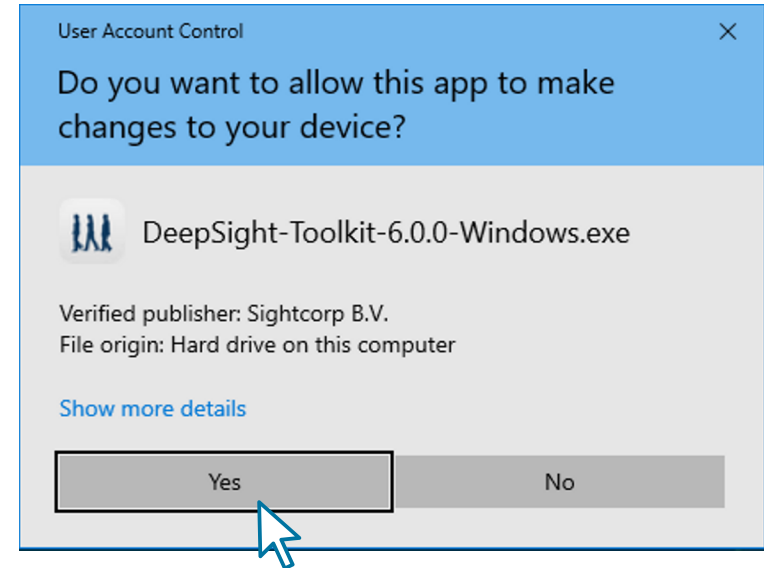


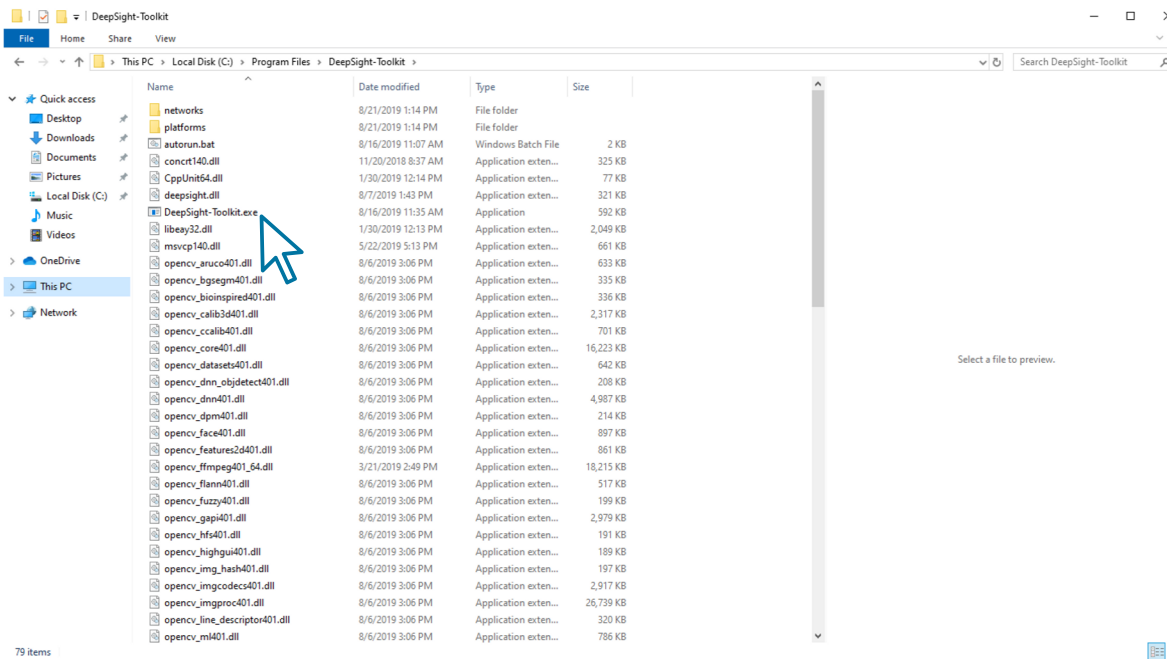
DeepSight Toolkit Quick Start Guide

Welcome! This quick start guide will help you get the DeepSight Toolkit up and running in 4 easy steps.

STEP 1

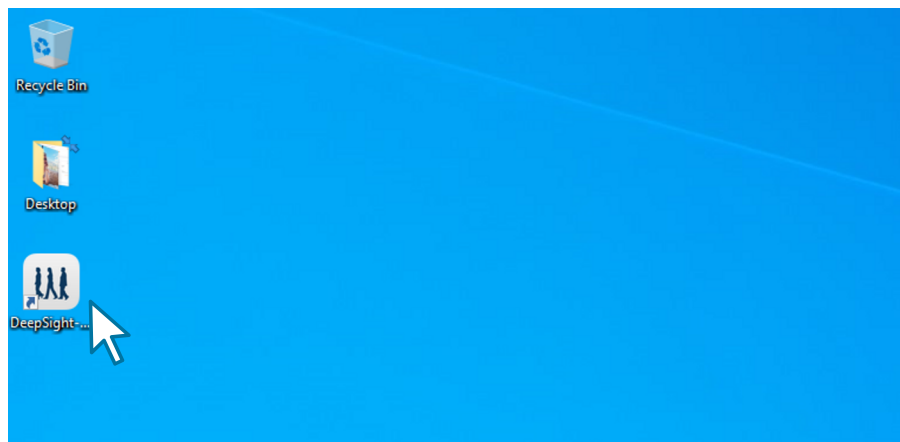
- Download the DeepSight Toolkit (see email)
- For Windows devices, **please allow the app to make changes to your device** and run it





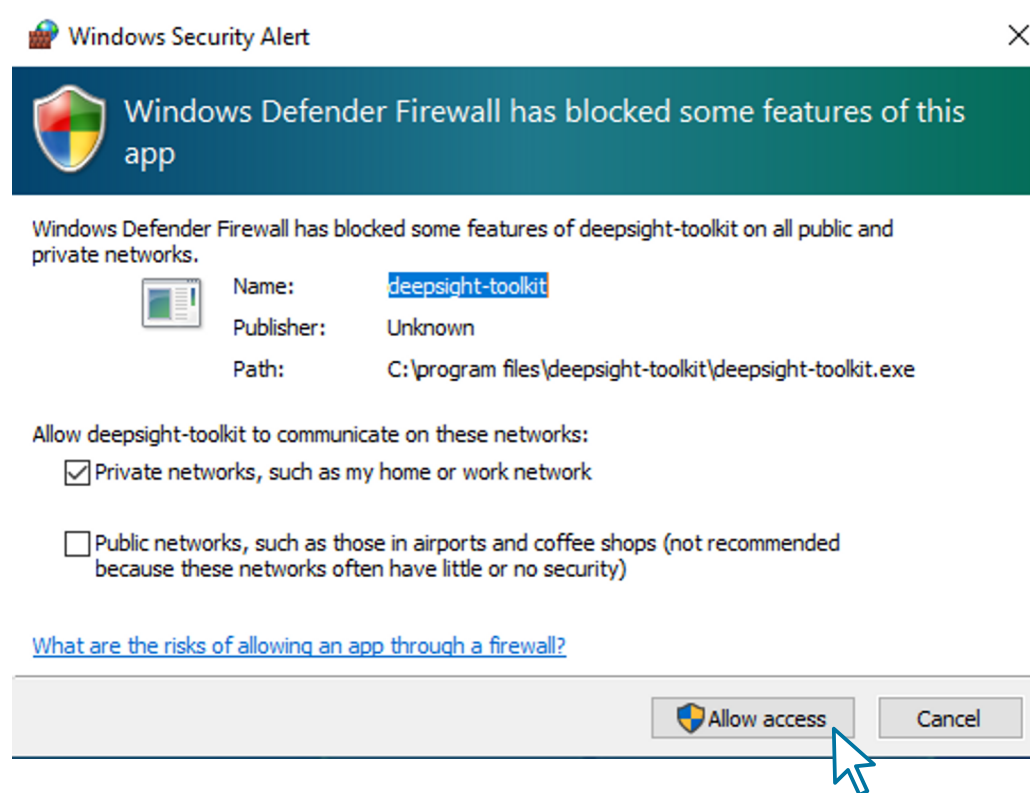
STEP 2

- You can now access your **application folder** and double click to activate and initialize the Toolkit



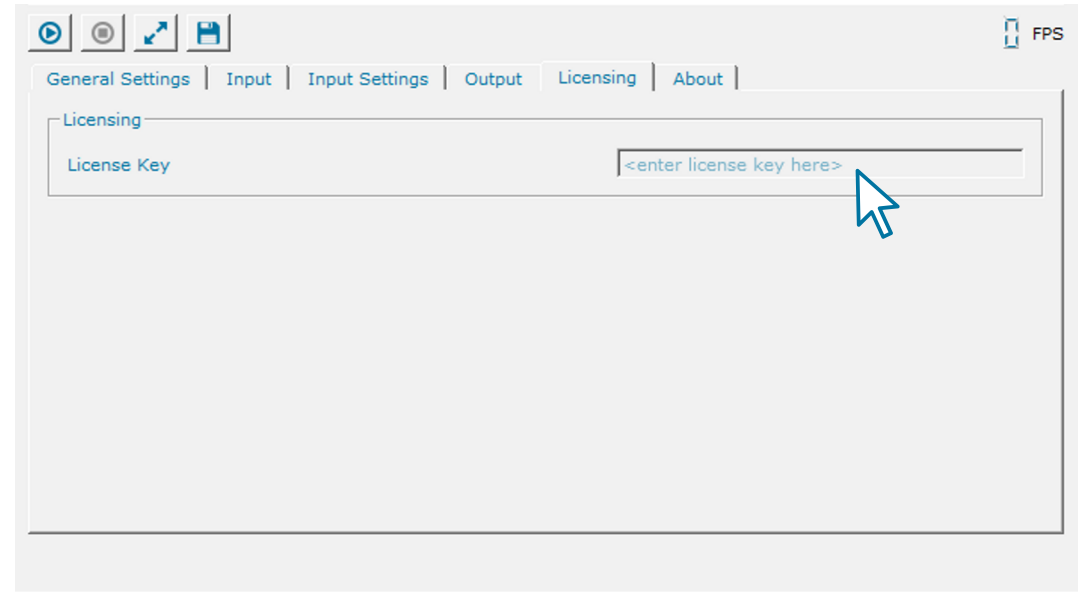
- A shortcut should also be found on your desktop by default

When opening the Toolkit for the first time you may be prompted by Windows Defender to allow or deny network access for it. Please click the '**Allow access**' button and check the first box, or both, depending on your use case.



STEP 3

- Insert your **license key** (see email) under the **Licensing Tab**.
- This trial license is valid for **14 days on two machines**.



STEP 4

- Download the **Toolkit Visualizer** (see email) to see reports on audience behavior quick & easy
- Follow the [DeepSight Toolkit Visualizer Guide](#) to learn more about how to visualize Toolkit data

Congratulations!

You have completed *Phase 1* of the installation and are now ready to move onto *Phase 2*

Phase 1

Phase 2

POC

Roll-out

DeepSight Toolkit

Best Practices

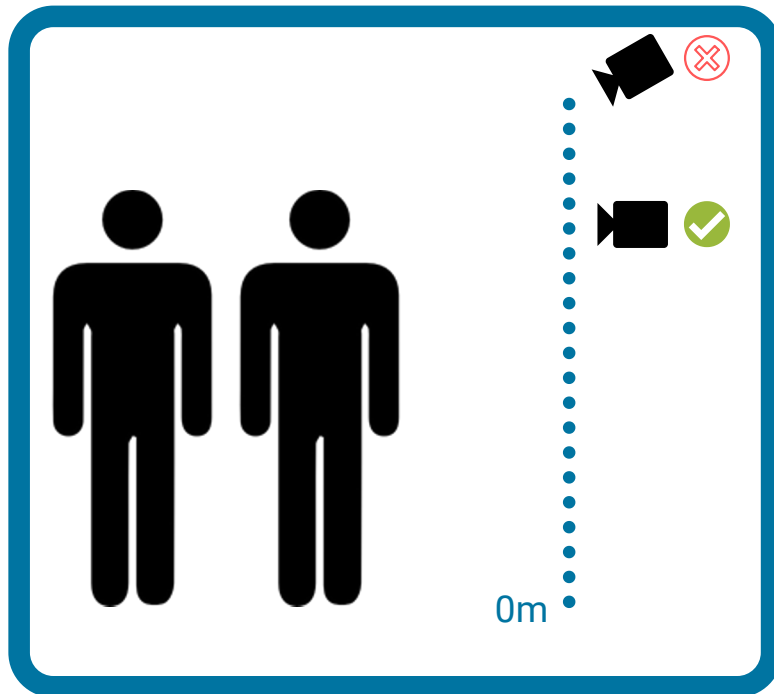
Phase 1

Phase 2

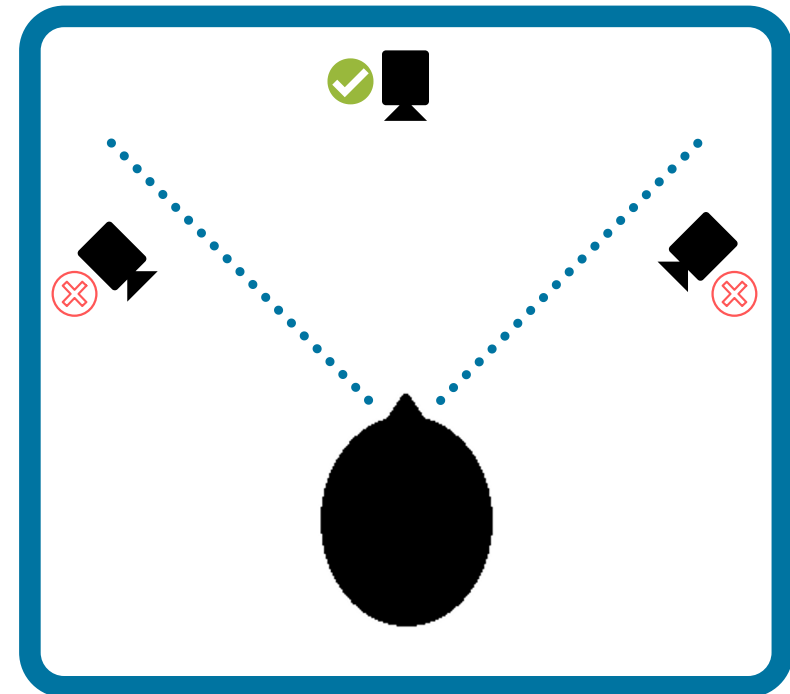
POC

Roll-out

The **camera** that you choose as well as its **positioning** can make a huge impact on the results and their accuracy. The following diagrams highlight some best practices regarding camera positioning relative to the analyzed audience.



The camera should be placed as close to **eye-level** as possible.



The camera should be placed as **frontal** as possible to capture full faces.

Check out the DeepSight Toolkit Manual

CLICK HERE

Phase 1

Phase 2

POC

Roll-out