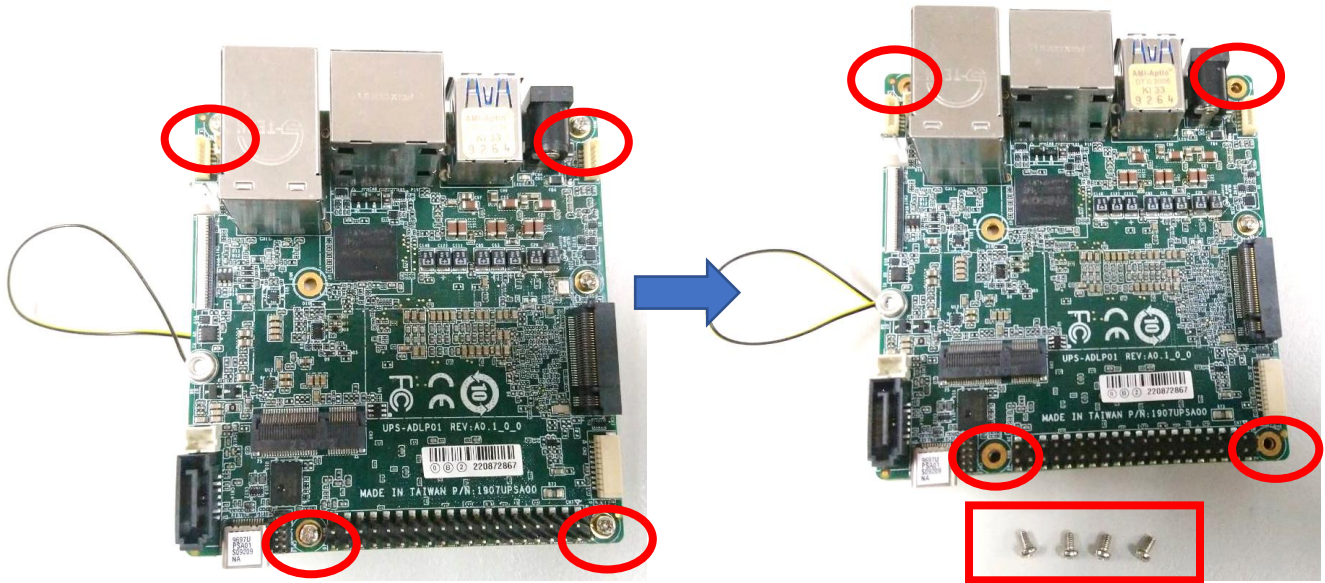
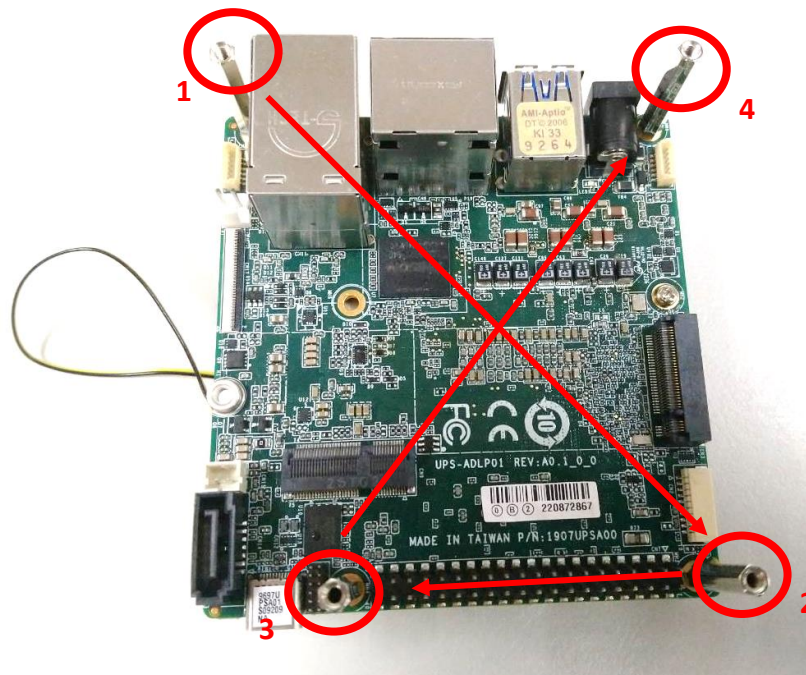


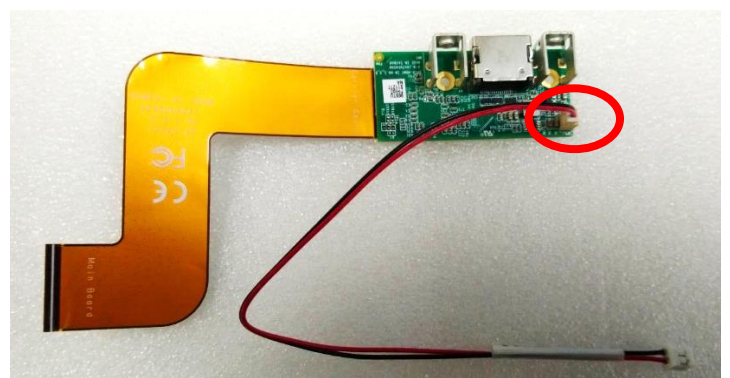
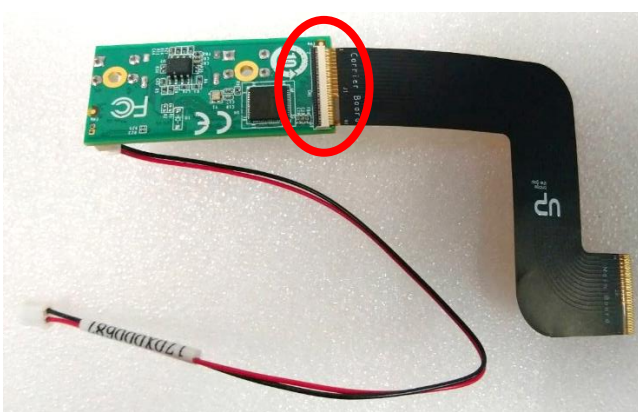
Step 1: Remove the four (4) screws from the outer edges of the board.



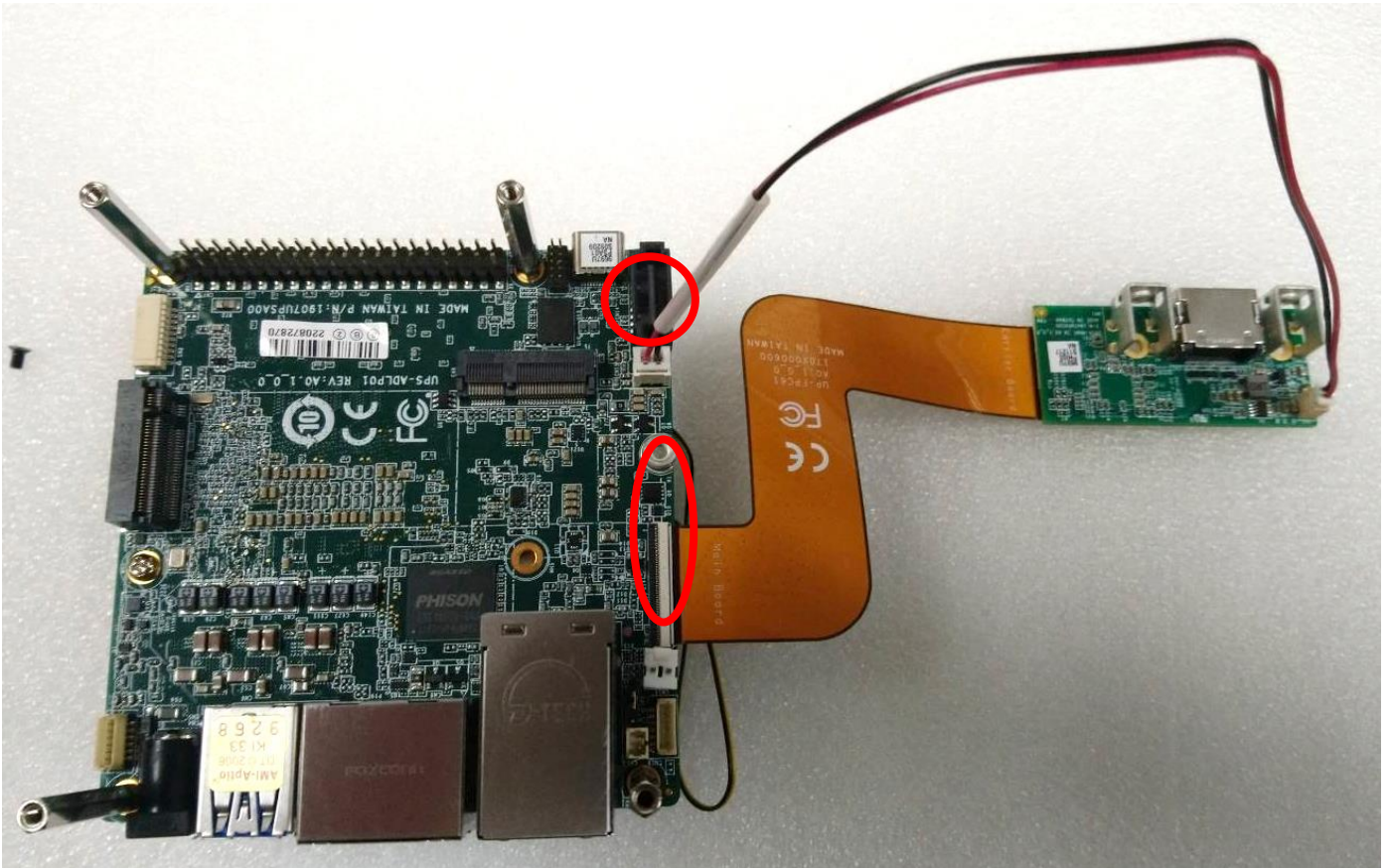
Step 2: Affix and lock the four (4) pillars to the board in the following sequence.



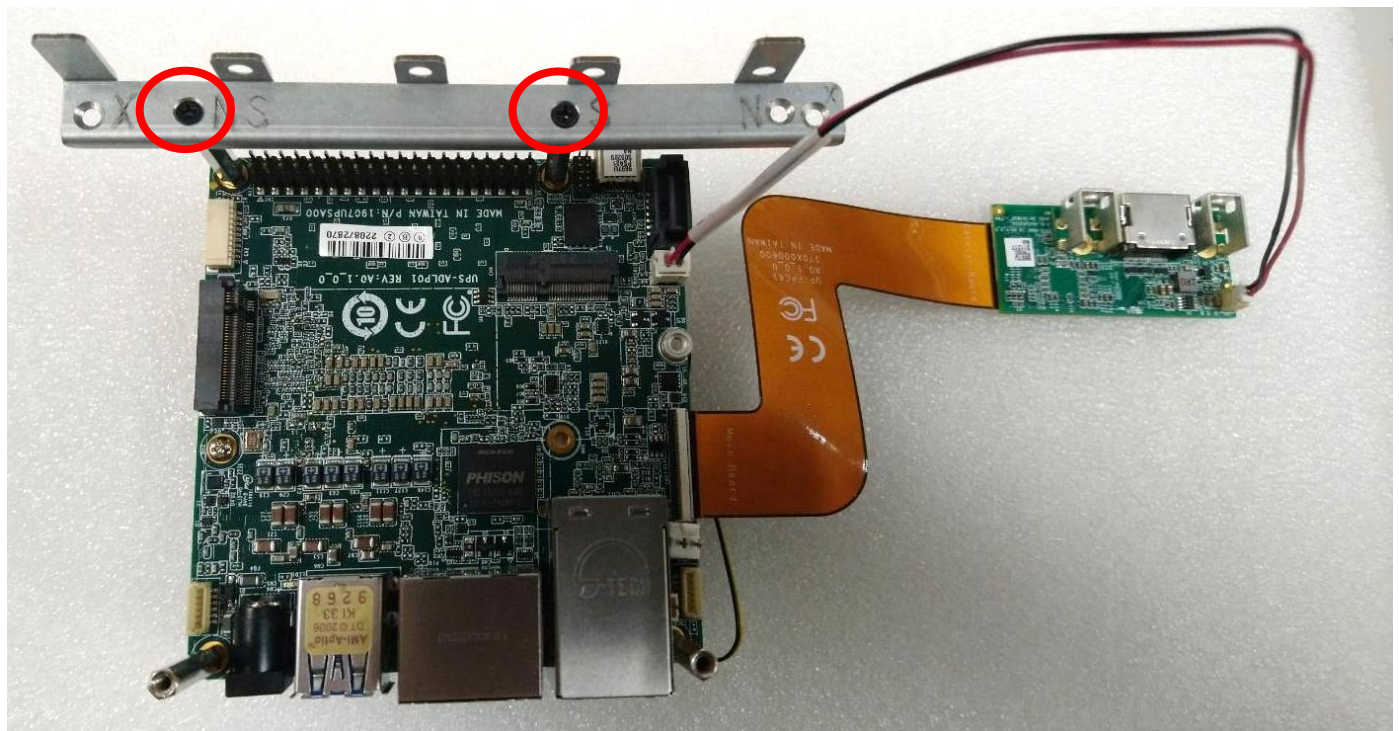
Step 3: Make sure to unlock the HDMI IN FPC connector, then plug the FPC cable into the FPC connector and power cable, noting the direction of the FPC cable.



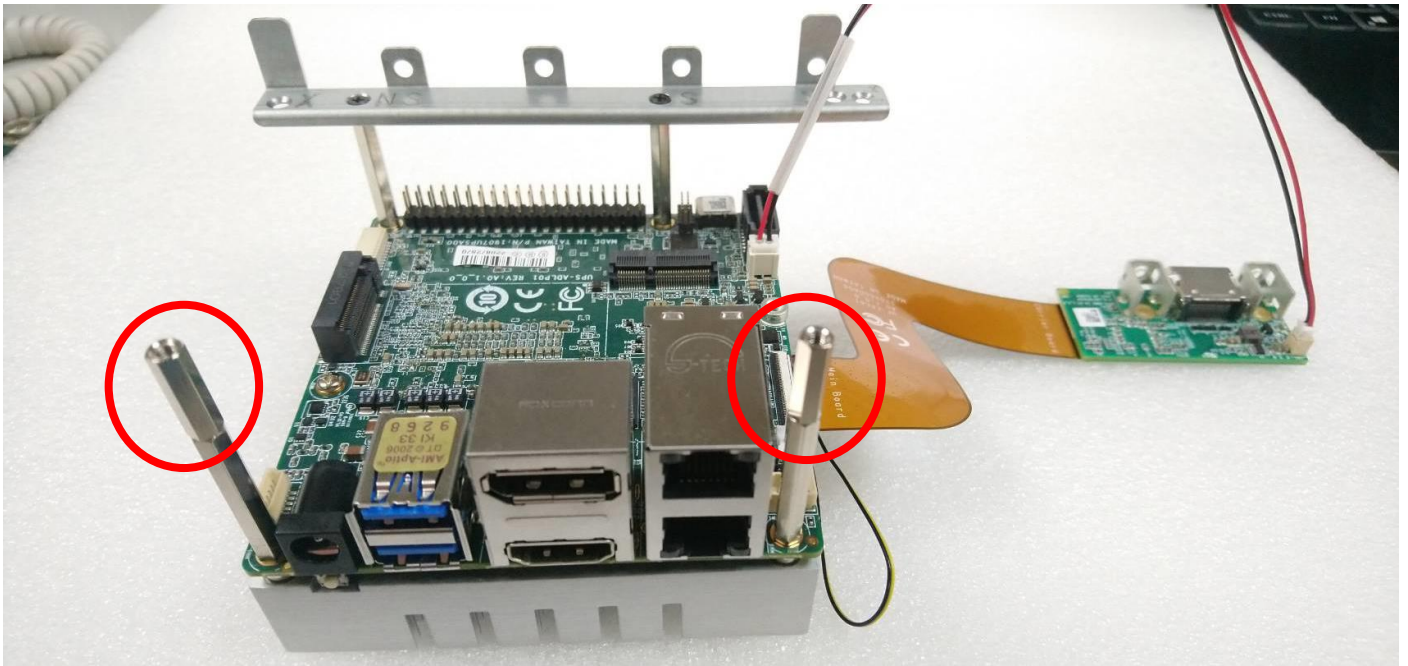
Step 4: Unlock the main board FPC connector, the plug the FPC cable and power cable into it.



Step 5: Put bracket on top of the pillars and affix and lock the Two (2) black screws. (Applicable for customers who order bracket through optional section within product page.)



Step 6: Affix and lock the Two (2) small pillars.



Step 7: Affix and lock the Two (2) silver screws to the HDMI IN carrier board.

