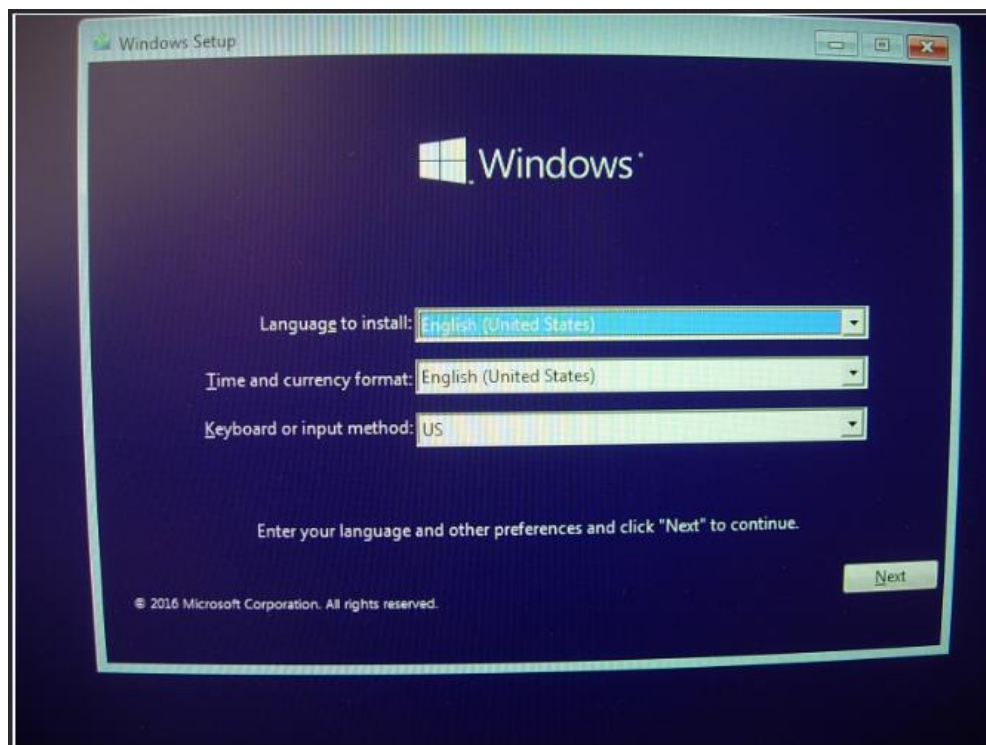


UP-X5-Z8300-01-A02

Windows 10 Installtion Guide

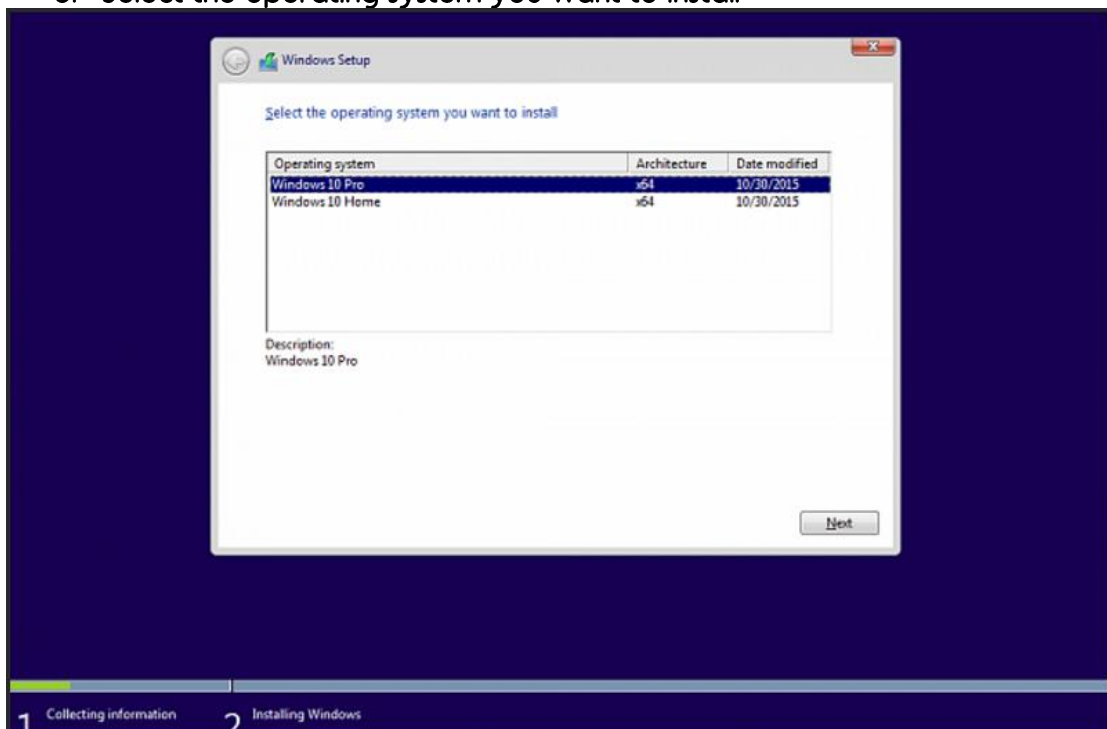
1. Please refer to <https://www.microsoft.com/en-us/software-download/windows10> to create a USB, DVD or ISO.
2. If you restart your PC and your current version of Windows starts, you might have to open a boot menu or change the boot order in your PC's BIOS or UEFI settings so that your PC boots from the media.
3. On the Install Windows page, enter your language and other preferences, and then select Next:



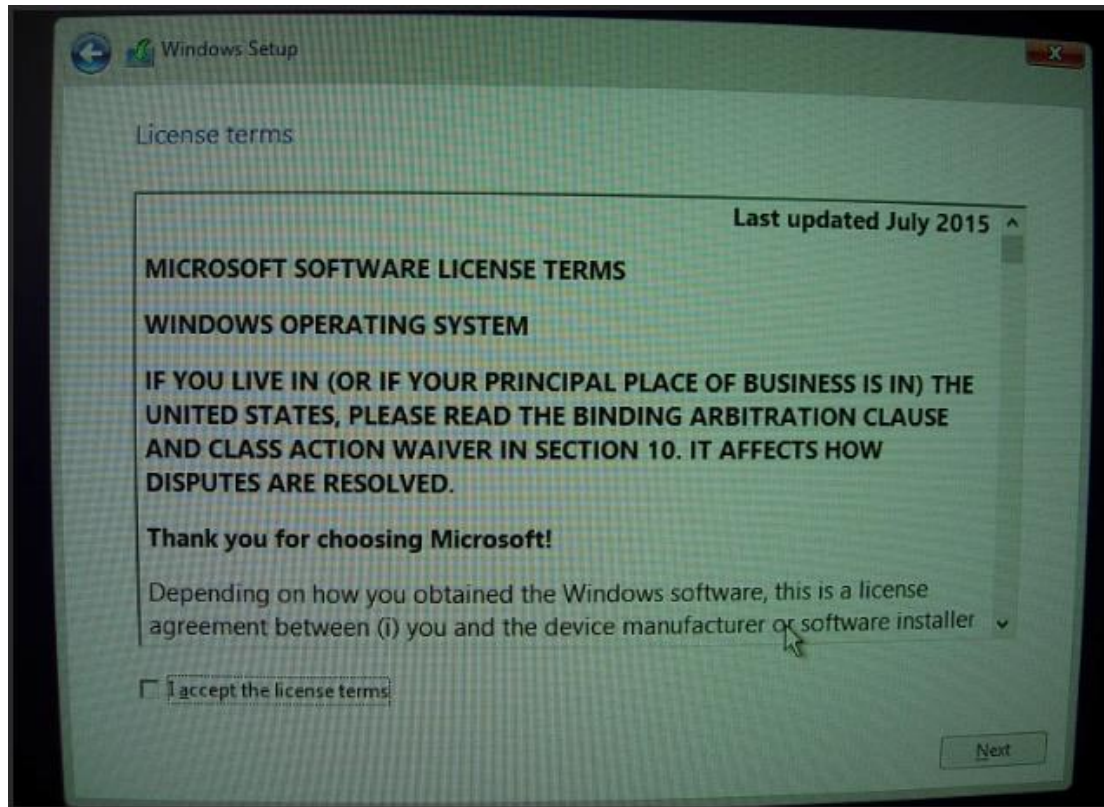
4. Select "Install Now"



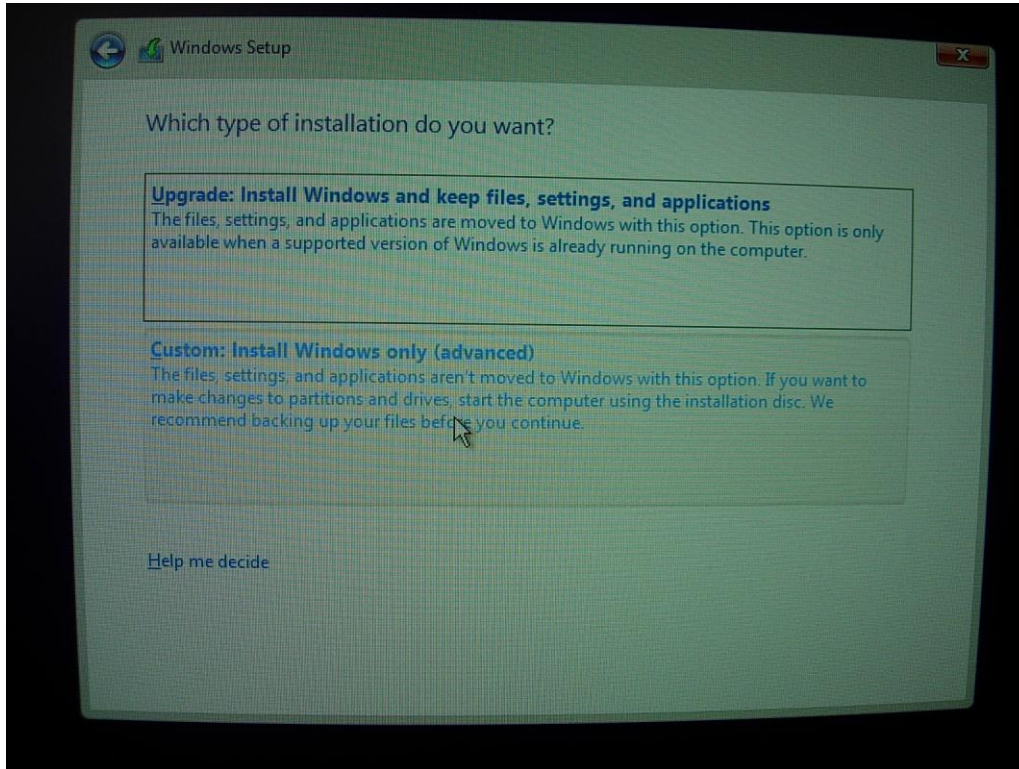
5. Select the operating system you want to install



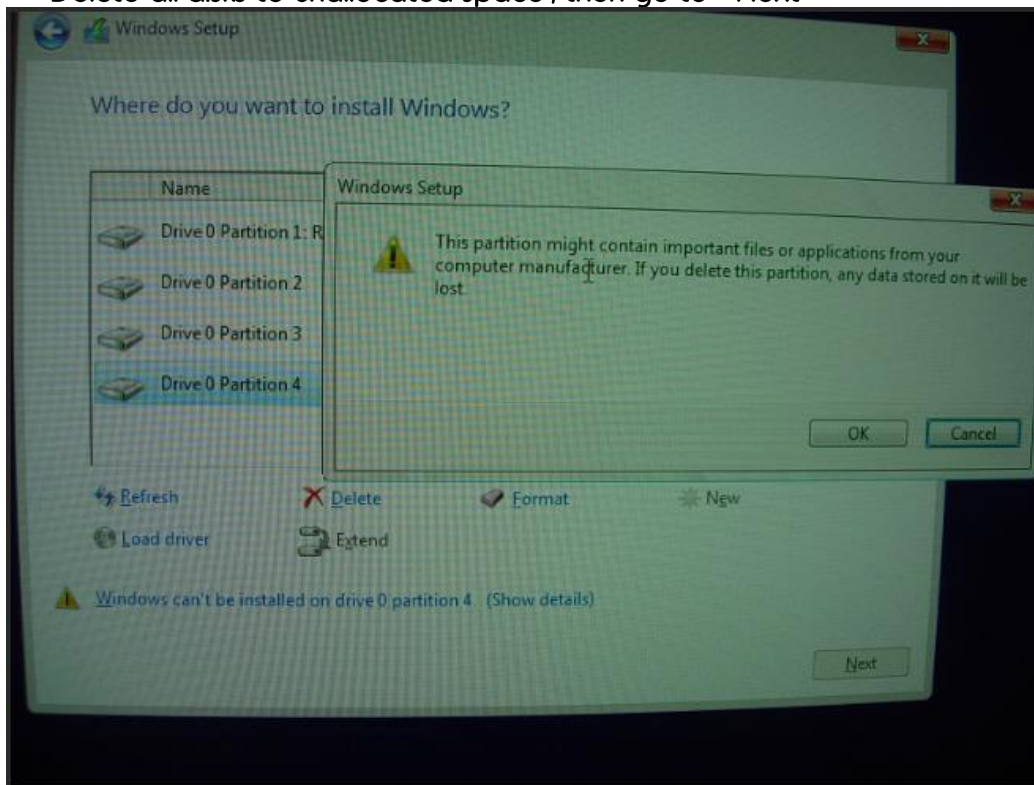
6. On the License terms page, if you accept the license terms, select "I accept the license terms", and then select "Next".

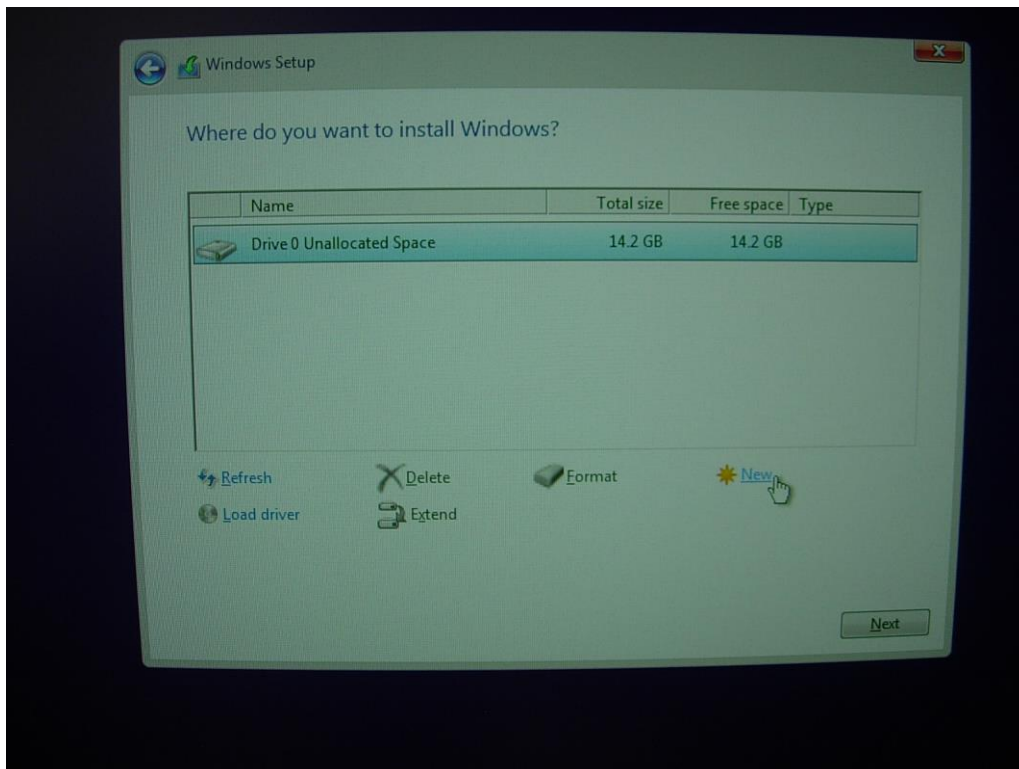
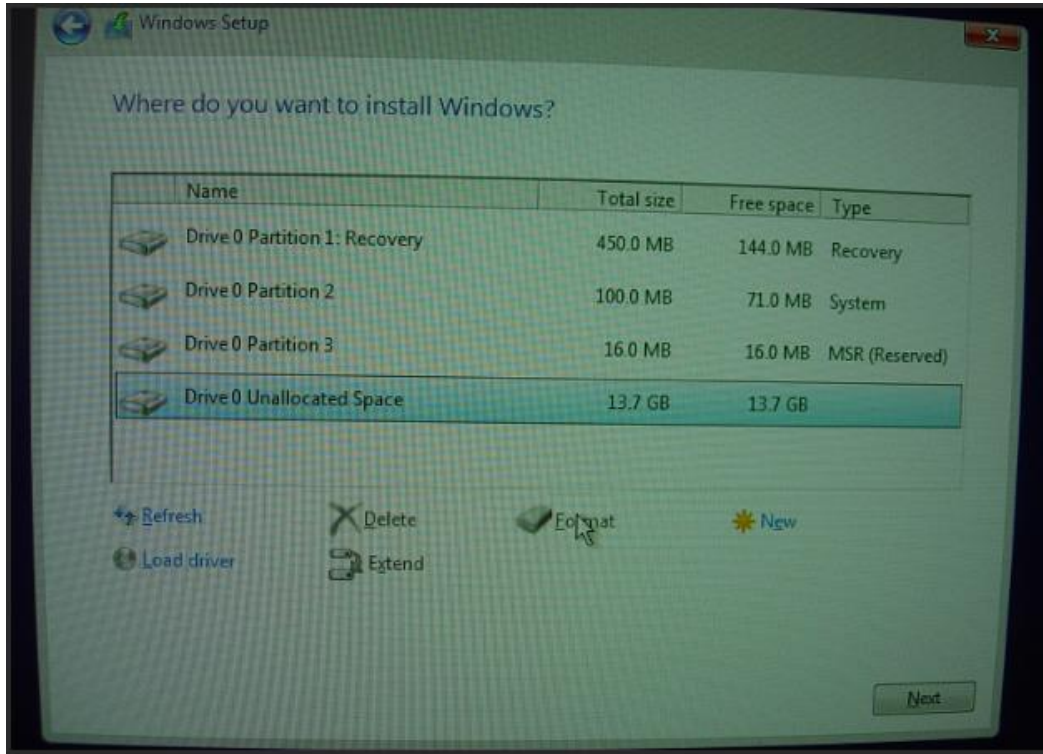


7. On the Which type of installation do you want?
Select "Custom"

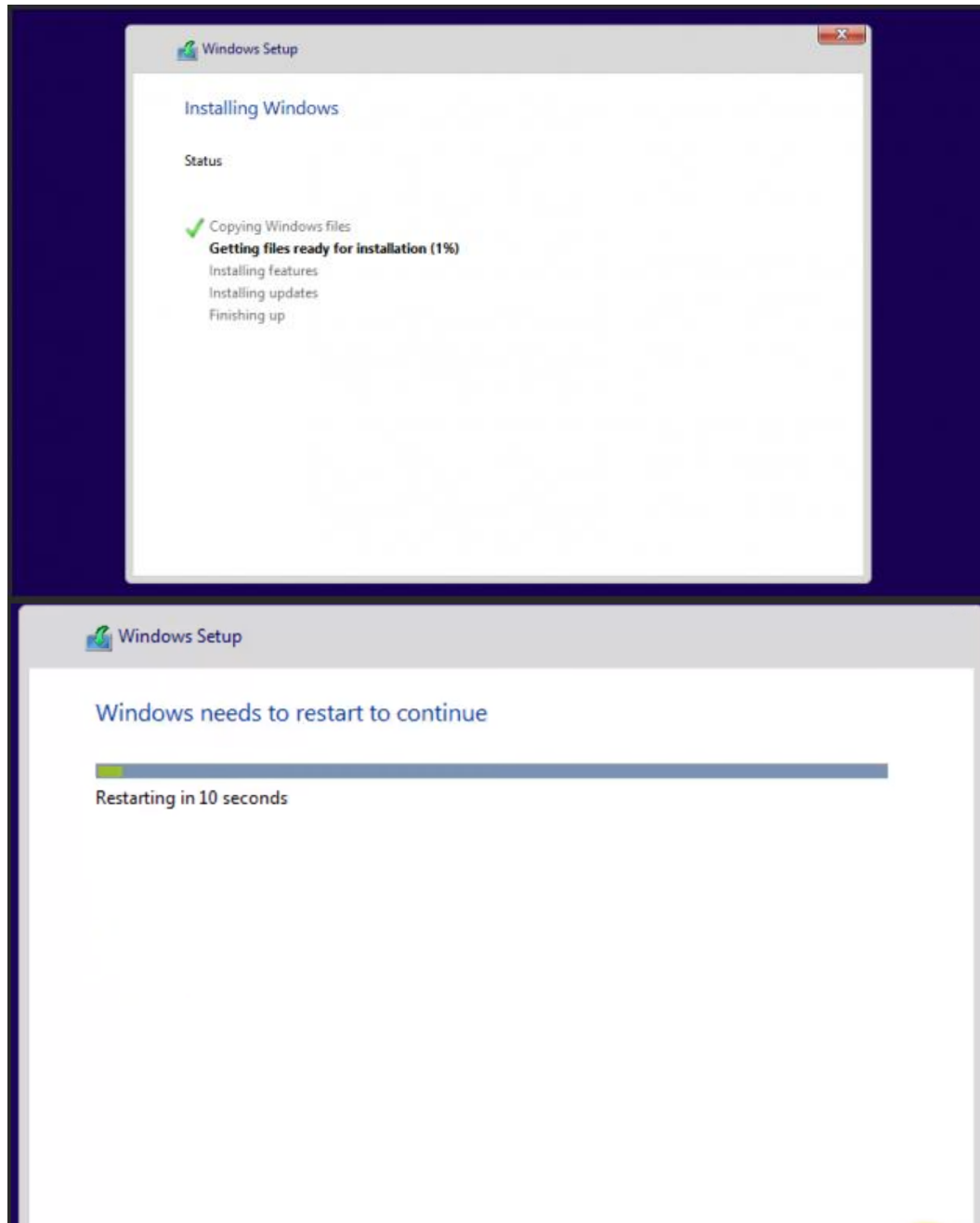


Delete all disks to unallocated space, then go to "Next"

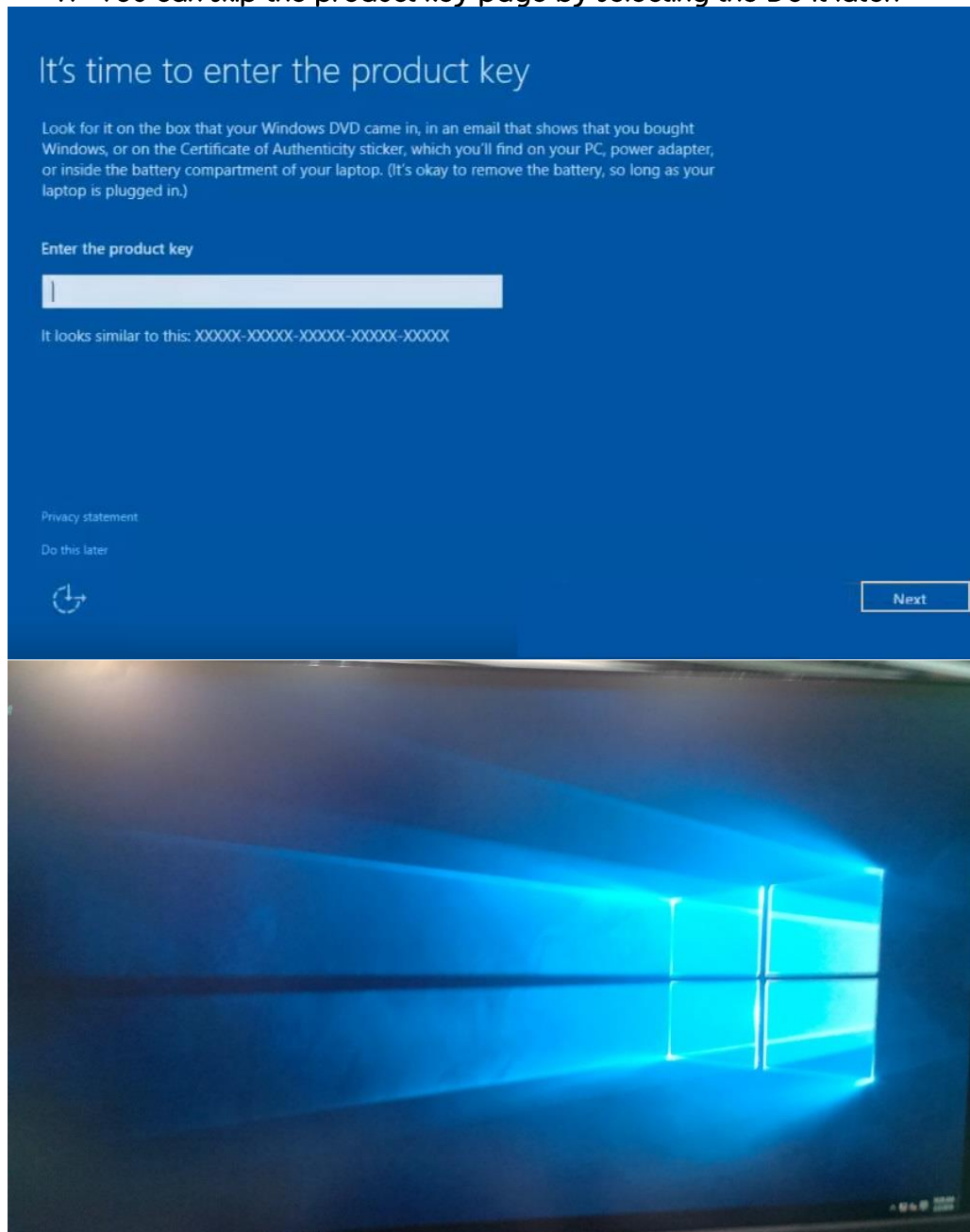




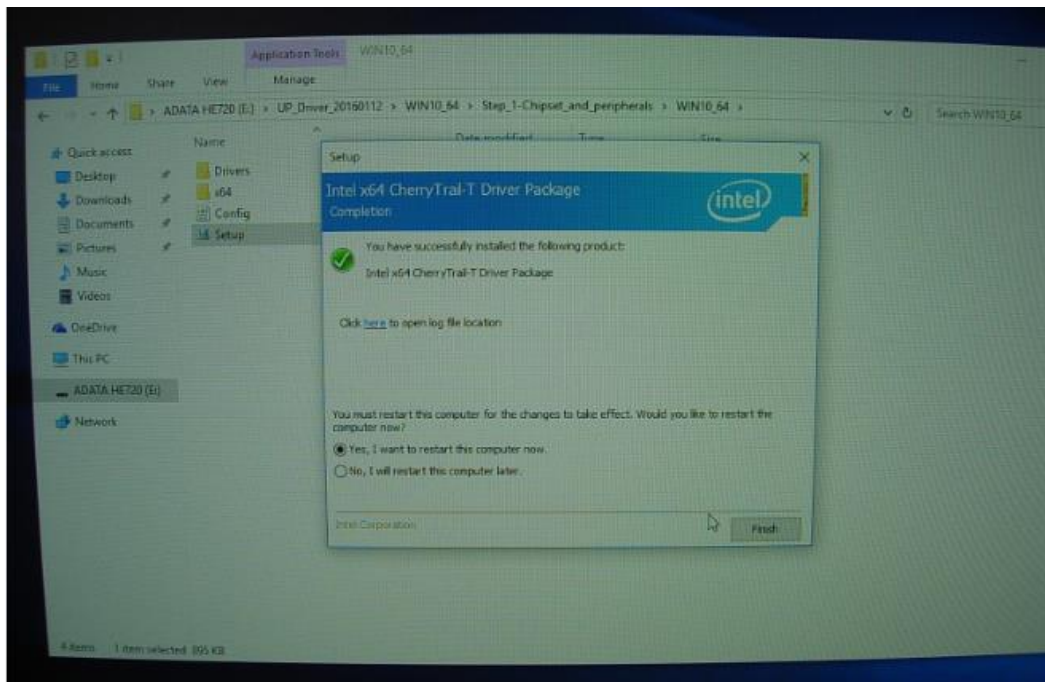
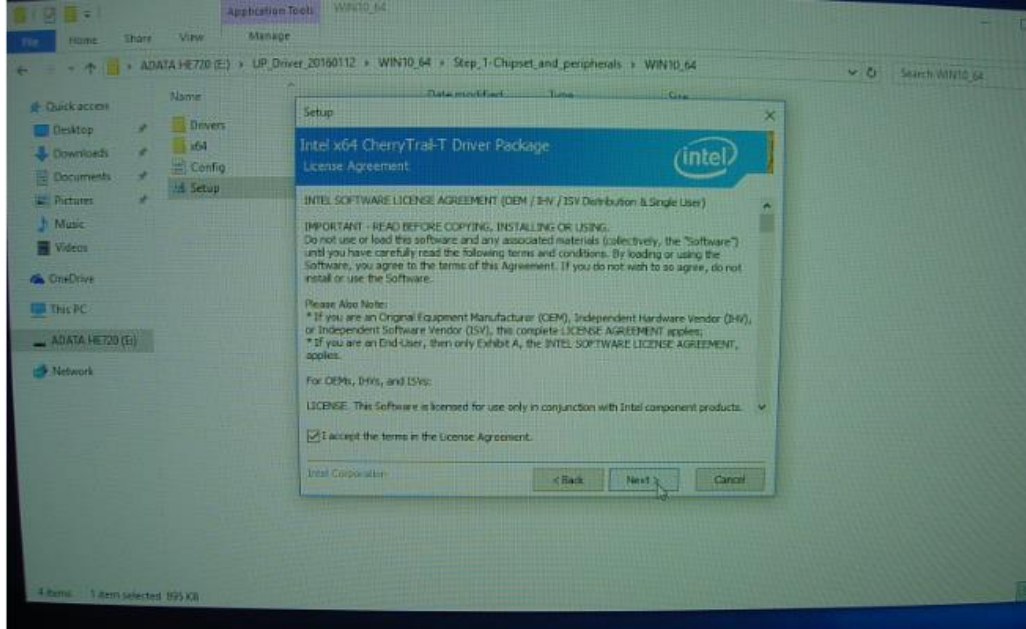
8. Start to Install Windows



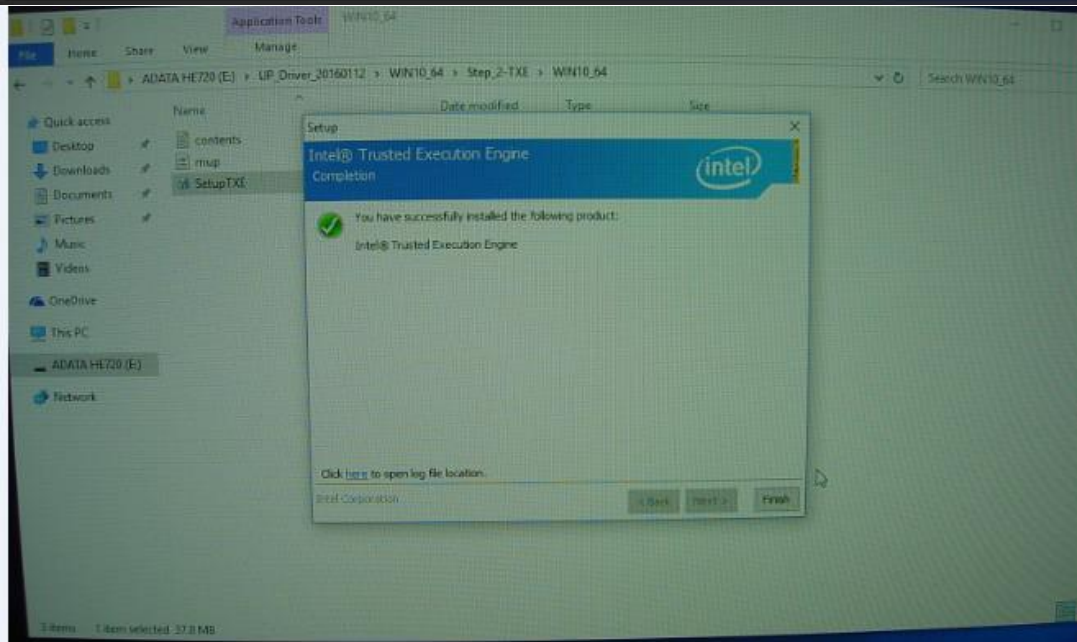
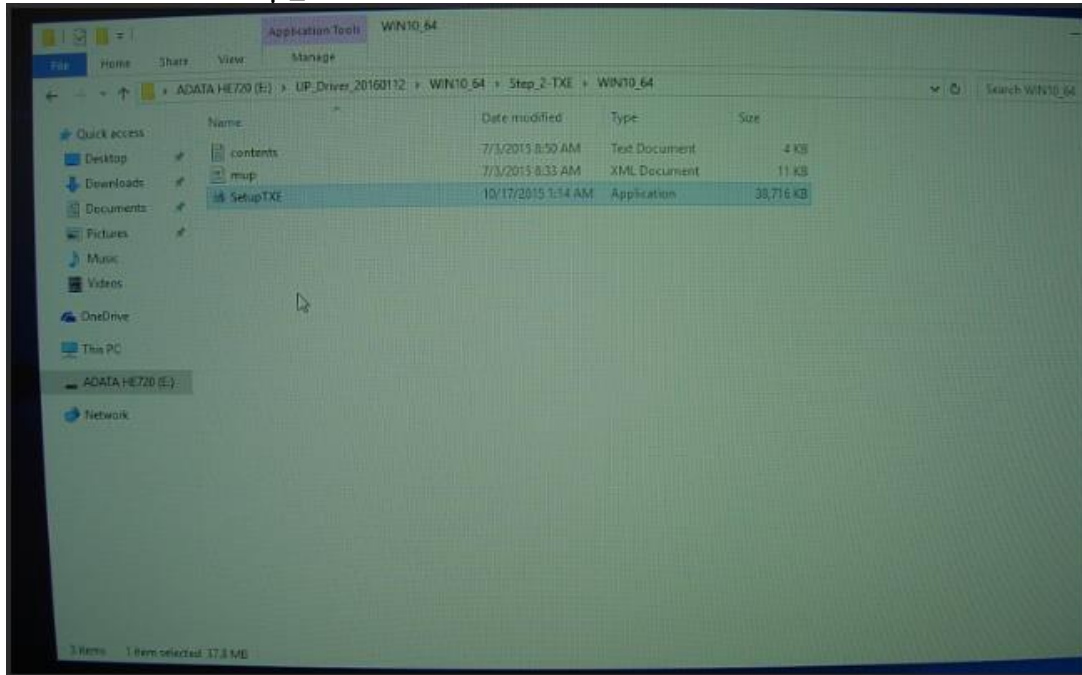
9. You can skip the product key page by selecting the Do it later.



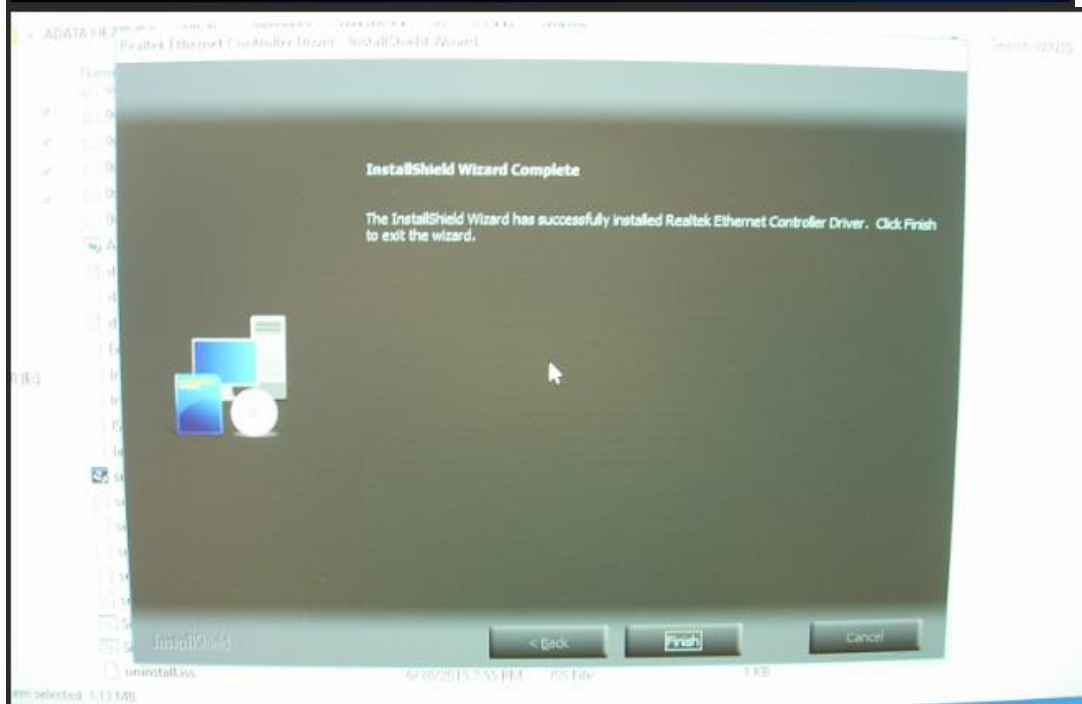
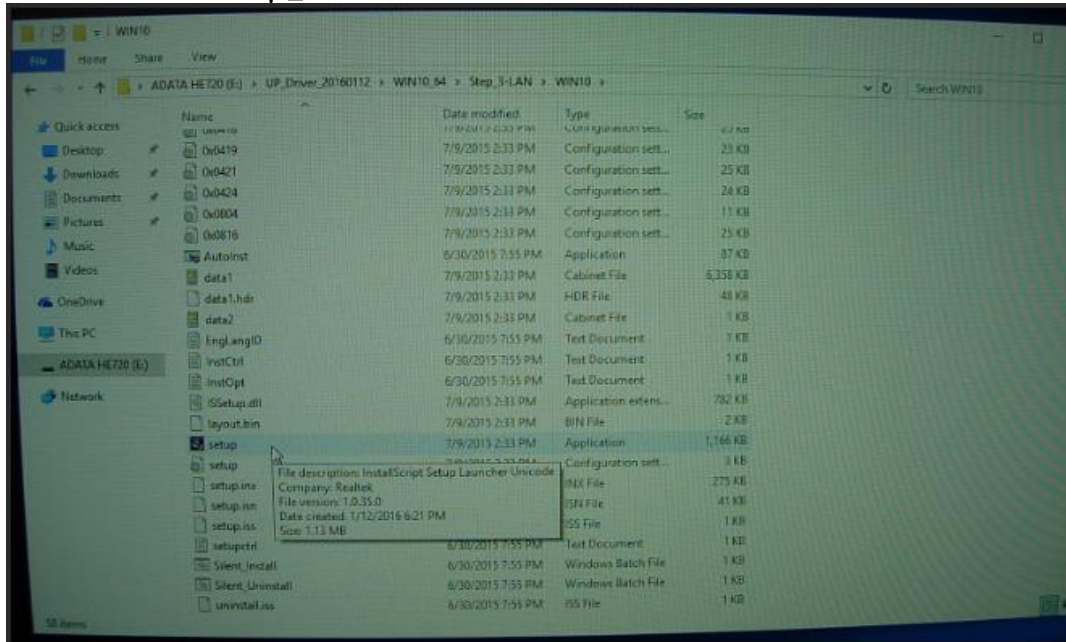
10. Install driver " Step_1-chipset_and_peripheralsDevices" Finish Install Devices and Restart Windows.



11. Install driver " Step_2-TXE"



12. Install driver "Step_3-LAN"



Complete!

Note:

PWM0, PWM1, HDA will be reported as unknown device in device managers. They are pins in 40-pin GP-bus. We will enable them in Windows soon.

