

User Manual of EP-CHUPCPLUSMT1

UP Core plus metal chassis



Revision: 01

Update Date: 30 July 2019

Prepared For: UP Shop User

Prepared By: Kuankuan Cao

AAEON Europe

Revision History

The following table contains the information regarding the history and revisions of this living document.

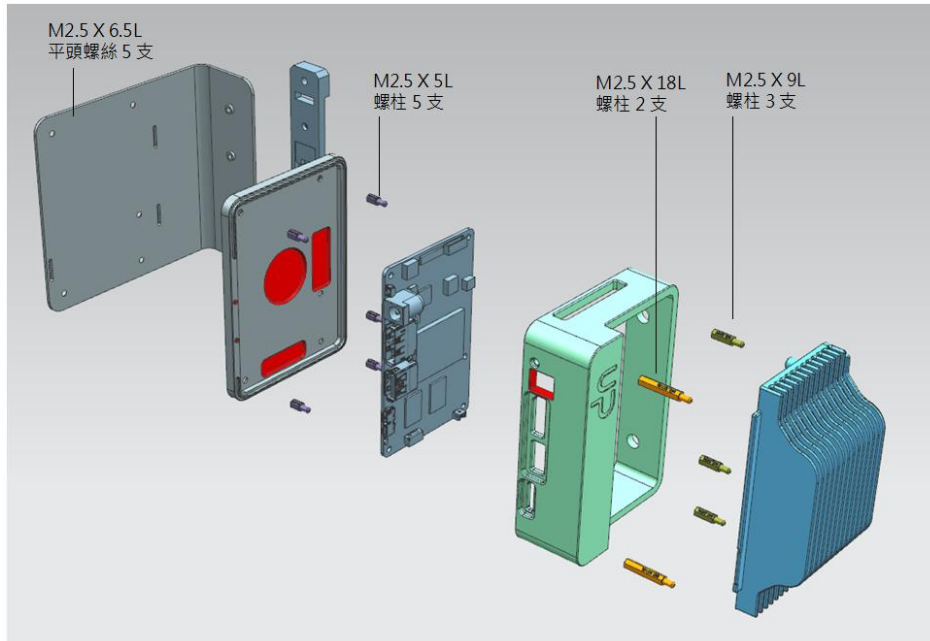
Version	Date	Contributor	Changes	Description
01	30/07/2019	Kuankuan Cao	Initial	Creation

Document Attributes

The following table contains the list of files that are associated with this living document.

Filename	Description
Approval Sheet EP-CHUPCPLUSMT1	Approval Sheet
3D EP-CHUPCPLUSMT1	3D Drawing

Exploding View:



Parts List

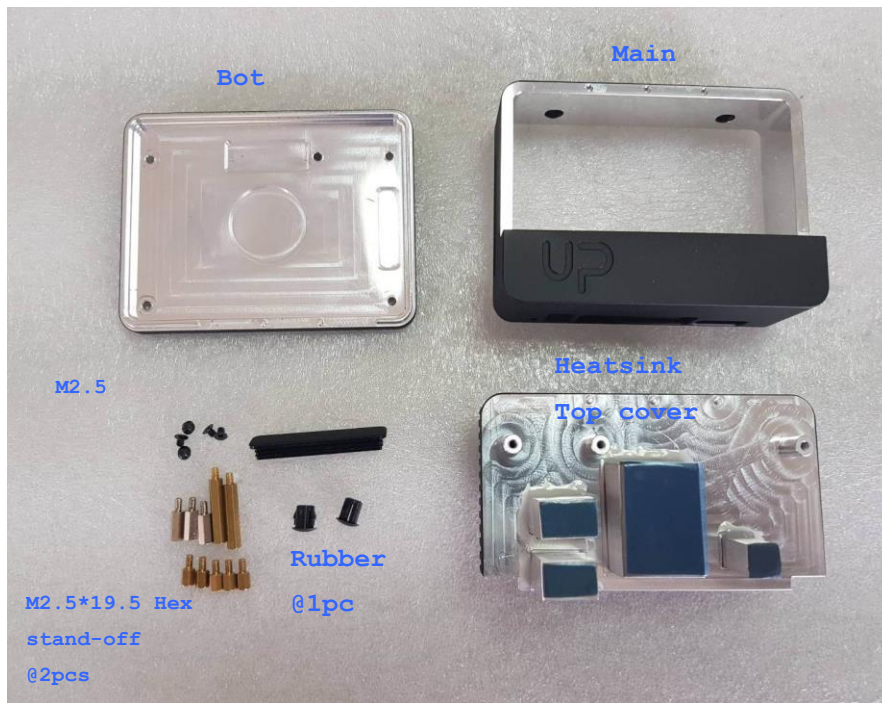
The kit includes the following items:

- Heatsink Top cover @1pc
- Main housing @1pc
- Bottom @1pc
- Vesa Plate @1pc
- M2.5*5 Hex Standoff. @5pcs
- M2.5*9 Hex Standoff. @3pcs
- M2.5*19.5 Hex Standoff @2pcs
- M2.5*4 Screw @5pcs
- M2.5*6.5crew @5pcs
- Rubber @1pc
- SMA plug @2pcs

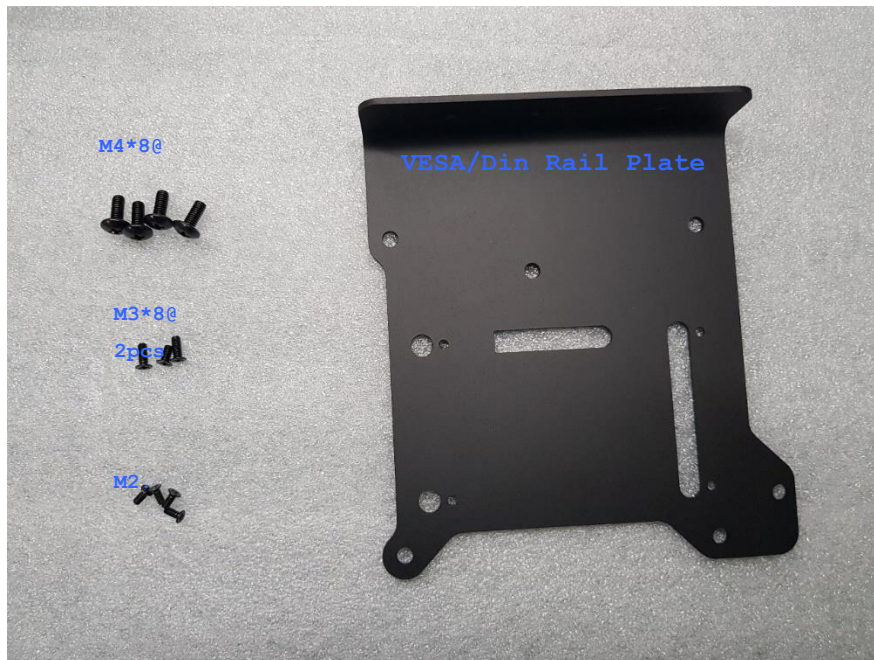
Not included with the kit, you may need to prepare:

- UP core plus mother board (UPC-PLUSxxxx)
- Din rail kit (EP-CHDINRNM12RC)

Package of UPCP housing:

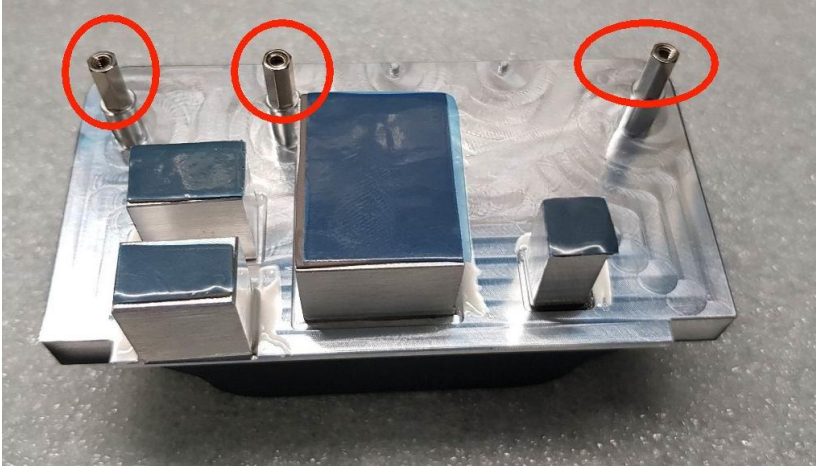


Package of Din Rail/VESA Plate:



Assembly STEP start from unboxing:

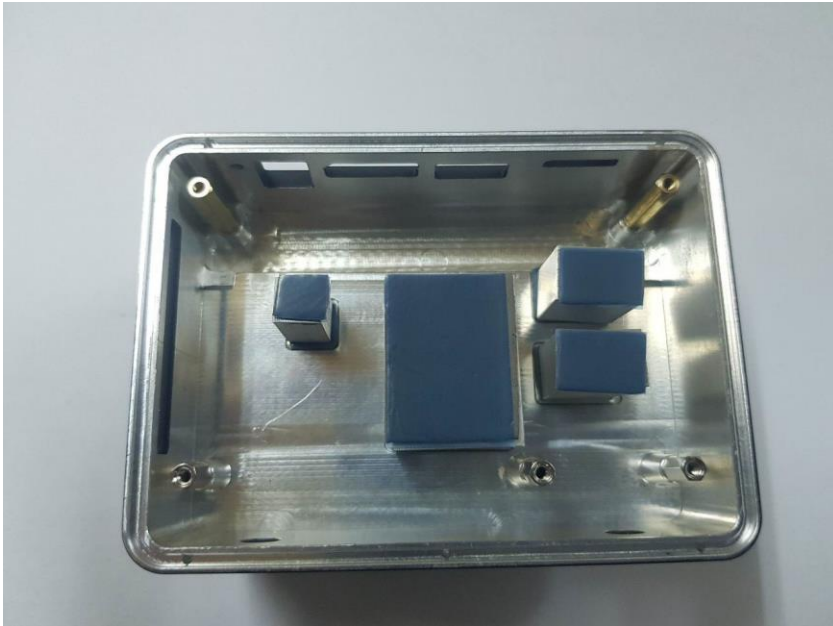
1. Screw M2.5*9 Stand off on the heatsink top cover



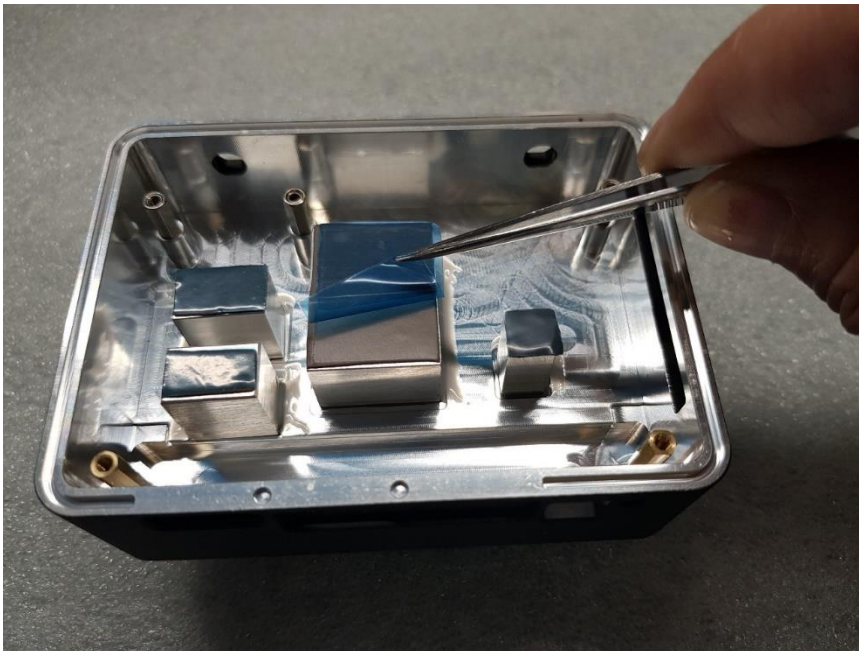
2. Screw M2.5*19.5 Stand off on the main housing



3. Assemble the heatsink top into the middle base.



4. Peel off the blue film on the 4 heatsink blocks.



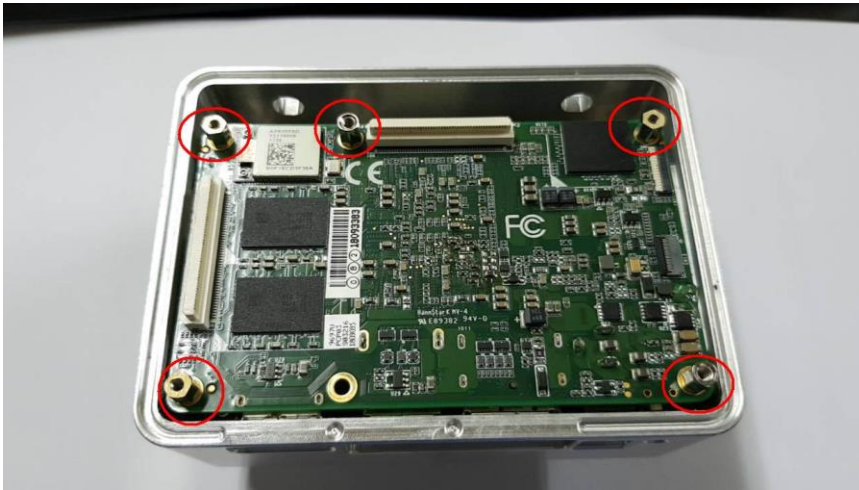
5. Place the UP core plus board carefully on the 5 studs , and press the board softly into its place.



6. Stick and fix the battery aside



7. Fasten UP core Board to the top cover with the M2.5*5 hex standoffs (thread nuts)



8. Place the bottom base on the middle base and fasten it with the M2.5*4 screws



9. Put on the Side rubber and SMA rubbers. Remove them once is needed to add Wifi Antenna and use other interfaces.

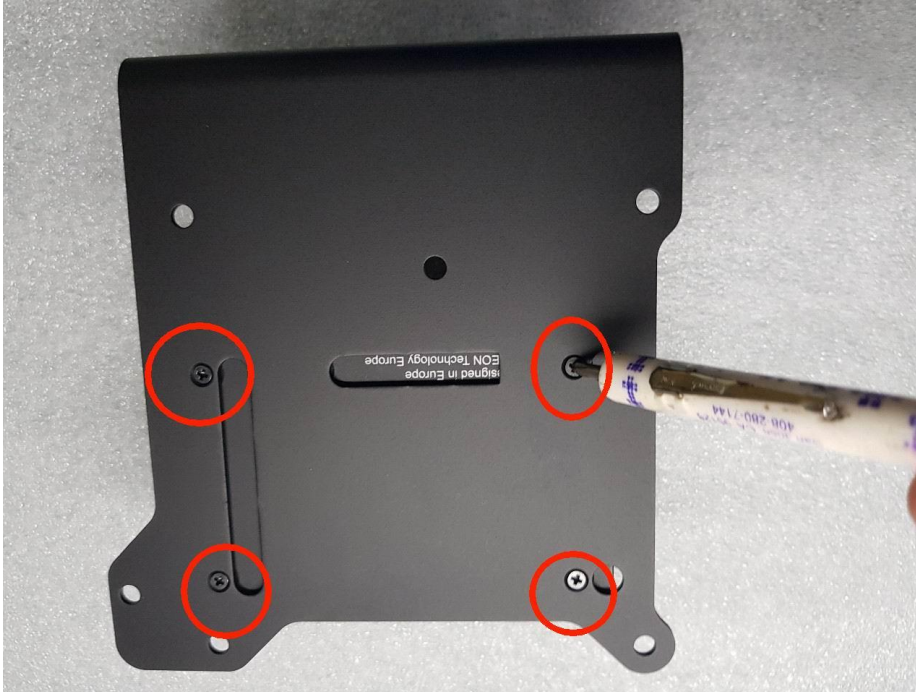


10. Check all sides and make sure is exactly match with the IO.



Optional: Assembly main housing with Din Rail / VESA Plate

1. In case you might need to use the VESA Plate, you will need to remove the 4pcs M2.5*4 screws mounted in the housing and replace them for M2.5*6 screws , which are in the package of the Din rail / VESA Plate. And only 4 needed to be screwed.



2. In case you might need to use the din rail. place the chassis to the side and use two M3*8 screws (right and left) and one M3*6 (middle) screws to fix the din rail ([EP-CHDINRNM12RC](#)) on the metal plate.

