

UPC-VISP4 IO Board Quick Installation Guide

REVISION HISTORY

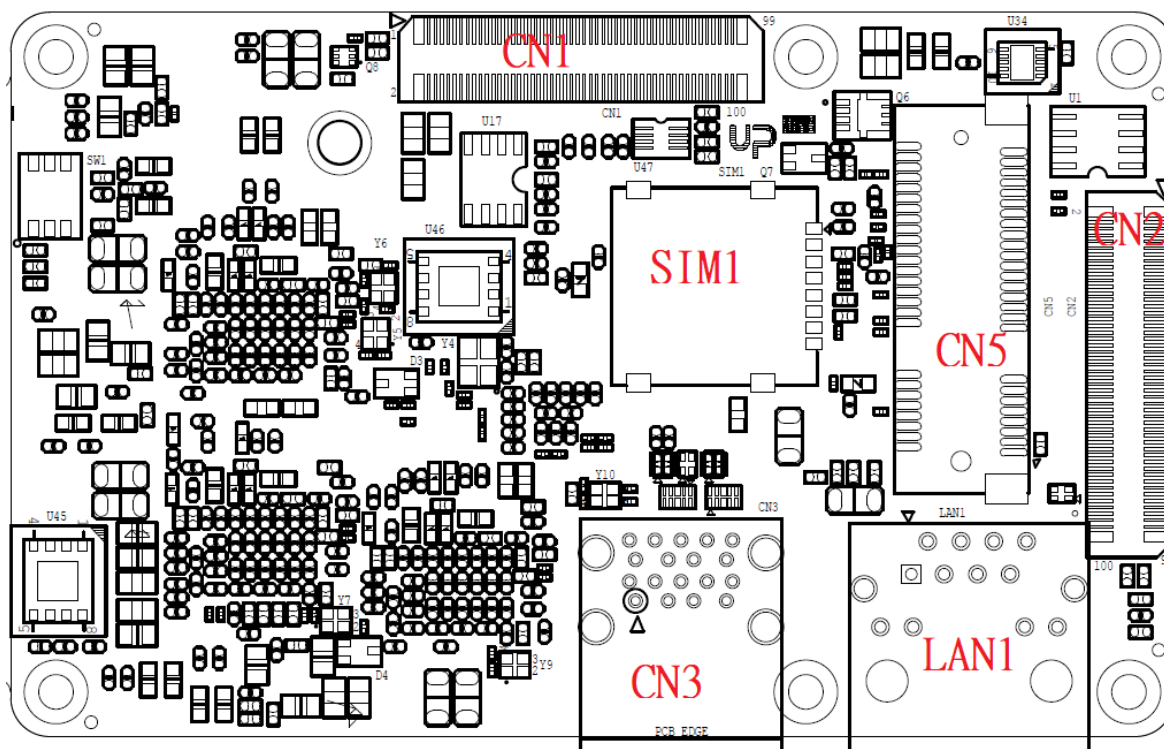
Revision	Date	Comments
A0.1	2018/05/24	Initial Version
A1.0	2019/03/24	
A1.1	2019/07/16	Modify CN1 &CN2 Modify board layout

Table of Content

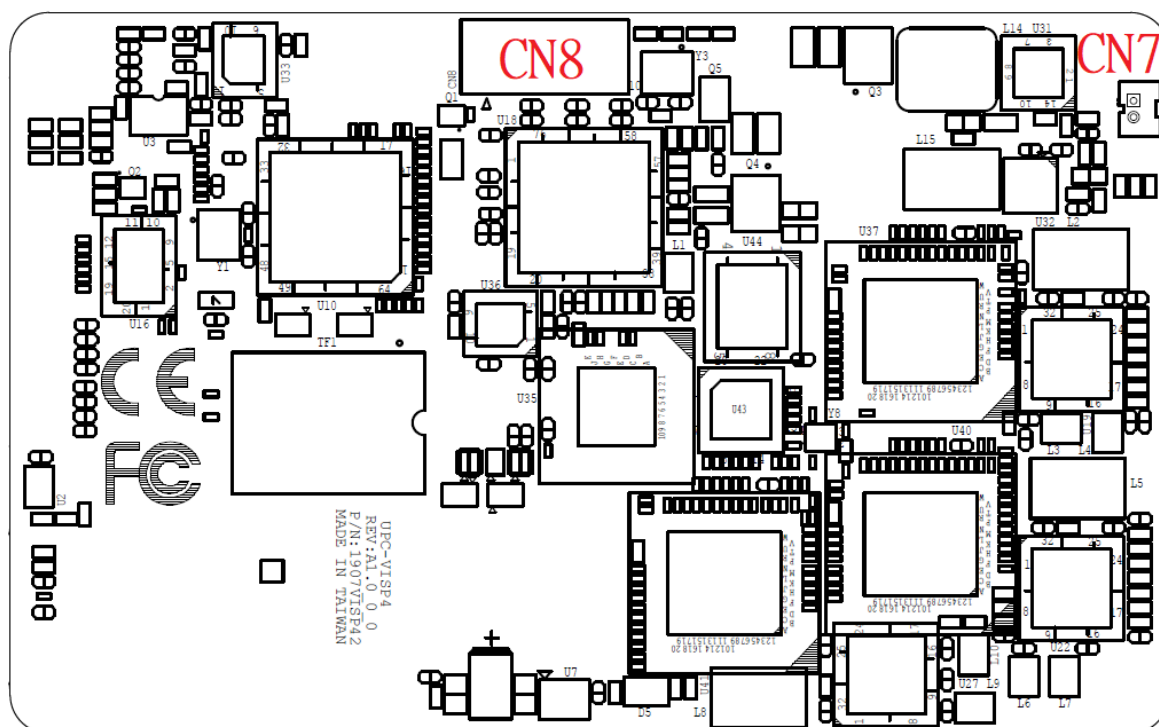
1.	UPC-VISP4 Board Layout.....	-4-
2.	Connector References	-5-
3.	Connector Pin Assignments	-6-

1. UPC-VISP4 Board Layout

Top side



Bottom side



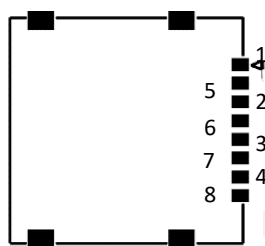
2. Connector References

Connector Index

Reference Designation	Functional Description	Connector Type
SIM1	SIM CARD	(TF)Micro SIM Socket.8P.SMD.Hinge Type.REGO.80440GIH-081T-12CL
CN1	DOCKING I	(TF)Board-Board Connector.100P.180D(F).SMD.Pitch=0.5mm.H=6.05mm.Panasonic.AXK5S0034 7YG
CN2	DOCKING II	(TF)Board-Board Connector.100P.180D(F).SMD.Pitch=0.5mm.H=6.05mm.Panasonic.AXK5S0034 7YG
CN3	USB3.0 .DUAL PORT.	(TF)USB3.0 CONNECTOR.DUAL PORT.18P.90D(F).DIP.LOTES.ABA-USB-254- K01
CN5	mini Card	(TF)MiniCard SLOT.52P.90D.(F).SMD.FOXCONN.AS0B226-S68Q-7H
CN7	FAN	(TF)WAFER BOX.2P.180D(M).DIP.1.25mm.PINREX.712-71-02TW01
CN8	Docking III	(TF)Wafer Box.10P.90D(M).SMD.1.0mm.PINREX.710-74-10TWR6
LAN1	LAN1	(TF)RJ45.12P.90D(F).Notch down.W/LED(L-G:R-O/G).DIP.UDE.RC1- 1Q00000D

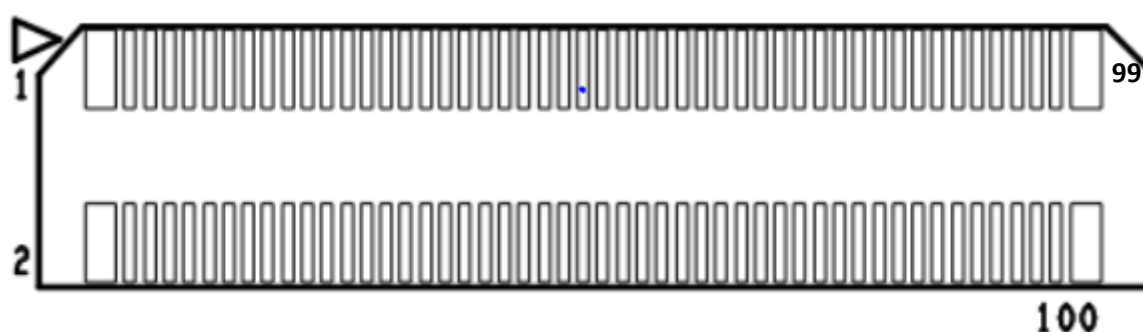
3. Connector Pin Assignments

SIM1: SIM CARD



Pin	Signal Description	Pin	Signal Description	Pin	Signal Description
1	UIM_PWR	2	UIM_RST	3	UIM_CLK
4	NC	5	GND	6	UIM_VPP
7	UIM_DAT	8	NC		

CN1: DOCKING I

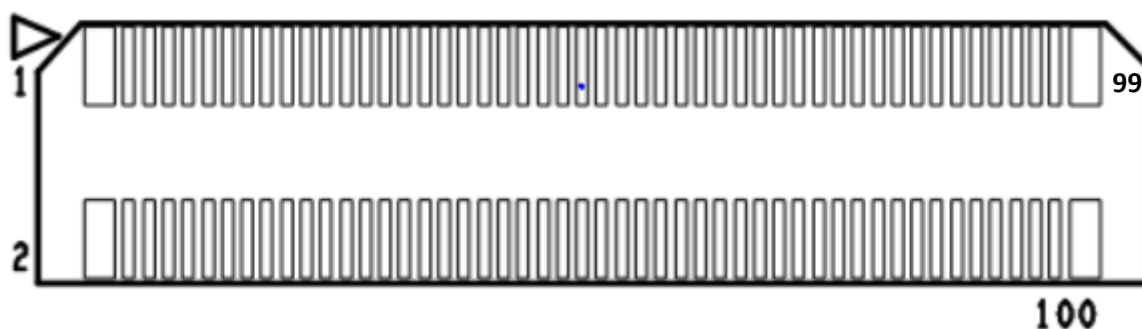


Pin	Signal Description	Pin	Signal Description
1	+V5A_CON	2	+V5A_CON
3	+V5A_CON	4	+V5A_CON
5	+V5A_CON	6	+V5A_CON
7	+V5A_CON	8	+V5A_CON
9	GND	10	GND
11	PLTRST_N	12	NC
13	NC	14	NC
15	SLP_S3#_3P3	16	NC
17	PCIE_CLKREQ3#	18	NC
19	NC	20	GND
21	GND	22	NC

23	NC	24	NC
25	NC	26	NC
27	NC	28	NC
29	NC	30	NC
31	NC	32	NC
33	GND	34	NC
35	NC	36	NC
37	NC	38	NC
39	NC	40	NC
41	NC	42	NC
43	GND	44	NC
45	NC	46	NC
47	NC	48	NC
49	NC	50	GND
51	NC	52	NC
53	GND	54	NC
55	NC	56	GND
57	NC	58	NC
59	GND	60	NC
61	NC	62	GND
63	NC	64	NC
65	GND	66	NC
67	NC	68	GND
69	NC	70	NC
71	GND	72	GND
73	I2C_SDA0	74	NC
75	I2C_SCL0	76	NC
77	GND	78	NC
79	I2C_SDA1	80	NC
81	I2C_SCL1	82	NC
83	GND	84	VPU_EN
85	NC	86	ISH_GPIO_13
87	NC	88	ISH_GPIO_14
89	GND	90	NC
91	NC	92	NC
93	NC	94	GND
95	NC	96	NC
97	NC	98	NC

99	NC	100	NC
----	----	-----	----

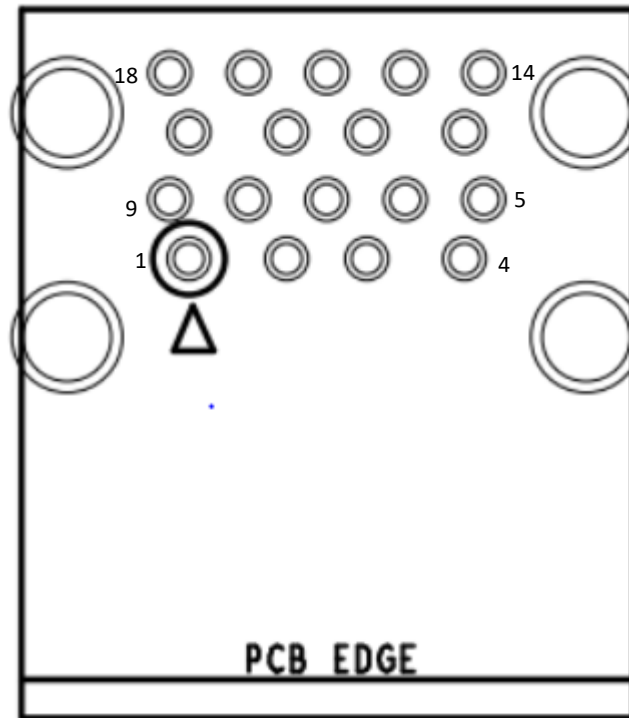
CN2: DOCKING II



Pin	Signal Description	Pin	Signal Description
1	+12V	2	+12V
3	+12V	4	+12V
5	+12V	6	+12V
7	+12V	8	+12V
9	NC	10	NC
11	GND	12	GND
13	NC	14	NC
15	NC	16	NC
17	GND	18	GND
19	NC	20	NC
21	NC	22	NC
23	GND	24	GND
25	NC	26	NC
27	NC	28	NC
29	GND	30	GND
31	PCIE_REFCLK0_P	32	PCIE_REFCLK1_P
33	PCIE_REFCLK0_N	34	PCIE_REFCLK1_N
35	GND	36	GND
37	PCIE_RXP0	38	PCIE_RXP1
39	PCIE_RXN0	40	PCIE_RXN1
41	GND	42	GND
43	PCIE_TXP0	44	PCIE_TXP1
45	PCIE_TXN0	46	PCIE_TXN1
47	GND	48	GND
49	PCIE_REFCLK2_P	50	USB3_P4_TXP

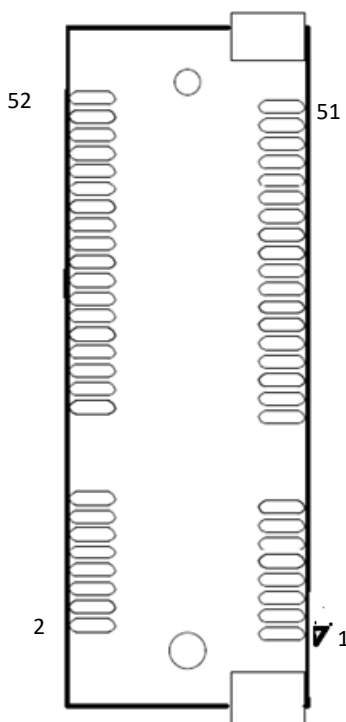
51	PCIE_REFCLK2_N	52	USB3_P4_TXN
53	GND	54	GND
55	PCIE_RXP2	56	USB3_P4_RXP
57	PCIE_RXN2	58	USB3_P4_RXN
59	GND	60	GND
61	PCIE_TXP2	62	NC
63	PCIE_TXN2	64	NC
65	GND	66	GND
67	NC	68	NC
69	NC	70	NC
71	GND	72	GND
73	NC	74	SATA_RXN0
75	NC	76	SATA_RXP0
77	GND	78	GND
79	USB2_DP3	80	SATA_TXP0
81	USB2_DN3	82	SATA_TXN0
83	GND	84	GND
85	USB2_DP4	86	NC
87	USB2_DN4	88	NC
89	GND	90	GND
91	NC	92	NC
93	PLT_RST#	94	NC
95	PCIE_WAKE0_N	96	PCIE_CLKREQ0#
97	PCIE_WAKE1_N	98	PCIE_CLKREQ1#
99	PCIE_WAKE2_N	100	PCIE_CLKREQ2#

CN3: USB DUAL PORT



Pin	Signal Description	Pin	Signal Description	Pin	Signal Description
1	+V5A_USB	2	USB2_DN3	3	USB2_DP3
4	GND	5	USB3_RXN_P3	6	USB3_RXP_P3
7	GND	8	USB3_TXN_P3	9	USB3_TXP_P3
10	+V5A_USB	11	USB2_DN4	12	USB2_DP4
13	GND	14	USB3_RXN_P4	15	USB3_RXP_P4
16	GND	17	USB3_TXN_P4	18	USB3_TXP_P4

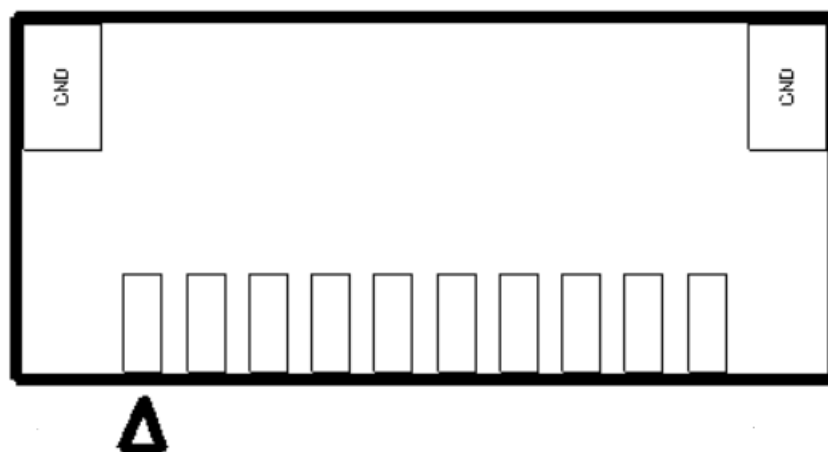
CN5: MINI PCIE



Pin	Signal Description	Pin	Signal Description
1	WAKE_MINI_N	2	MINIPCI_E_3.3V
3	NC	4	GND
5	NC	6	+V1.5S
7	NC	8	UIM_PWR
9	GND	10	UIM_DAT
11	PCIE_REFCLK1_N	12	UIM_CLK
13	PCIE_REFCLK1_P	14	UIM_RST
15	GND	16	UIM_VPP
17	NC	18	GND
19	NC	20	PWR_EN
21	GND	22	PLTRST#
23	PCIE_RXN1/SATA_RXP0	24	MINIPCI_E_3.3V
25	PCIE_RXP1/SATA_RXN0	26	GND
27	GND	28	+V1.5S
29	GND	30	NC
31	PCIE_TXN1/SATA_TXN0	32	NC

33	PCIE_TXP1/SATA_TXP0	34	GND
35	GND	36	USB2_DN5
37	GND	38	USB2_DP5
39	MINIPCIE_3.3V	40	GND
41	MINIPCIE_3.3V	42	NC
43	mSATA_PCl_e_SEL	44	NC
45	NC	46	NC
47	NC	48	+V1.5S
49	NC	50	GND
51	GND	52	MINIPCIE_3.3V

CN8: DOCKING III



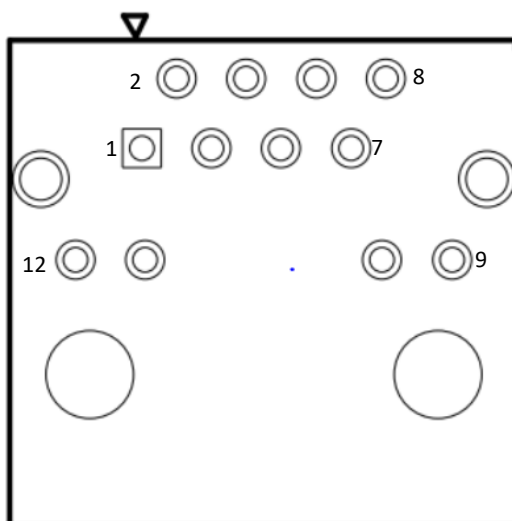
Pin	Signal Description	Pin	Signal Description
1	NC	2	I2C0_SCL_1P8
3	I2C0_SDA_1P8	4	GND
5	PM_SLP_S3#_3P3	6	PCIE_CLKREQ3#
7	VPU_EN	8	ISH_GPIO_13
9	ISH_GPIO_14	10	NC

CN7: FAN



Pin	Signal Description	Pin	Signal Description
1	+V5A	2	GND

LAN1: LAN PORT



Pin	Signal Description	Pin	Signal Description	Pin	Signal Description
1	LAN1_TMDI0+	2	LAN1_TMDI0-	3	LAN1_TMDI1+
4	LAN1_TMDI2+	5	LAN1_TMDI2-	6	LAN1_TMDI1-
7	LAN1_TMDI3+	8	LAN1_TMDI3-	9	LAN1_LED_1000#
10	LAN1_LED_100#	11	LAN1_ACTLEDN	12	LAN1_ACTLEDP