

MINI-MYX Board Quick Installation Guide



REVISION HISTORY

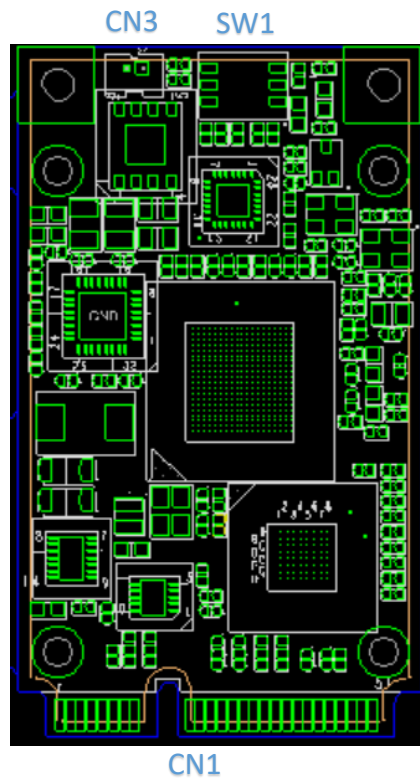
Revision	Date	Comments
A0.1	2018/08/17	Initial Version
A0.2	2018/11/21	
A0.3	2019/02/18	
A0.4	2019/07/11	

Table of Content

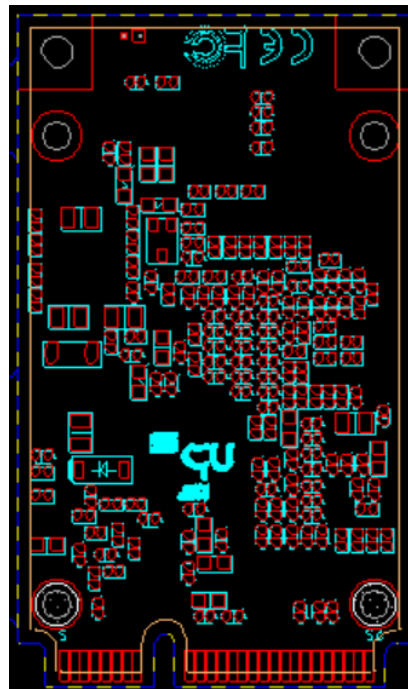
1. MINI MYX v1.0 Board Layout.....	-4-
2. Connector References	-5-
3. Connector Pin Assignments.....	-6-

1. MINI MYX V1.0 Board Layout

TOP



BOTTOM



2. Connector References

Connector Index

Reference Designation	Functional Description	Connector Type
CN1	MINI PCIE	PCIE CONN 52pin
CN3	FAN	(TF)WAFER BOX.2P.180D(M).DIP.1.25mm.PINREX.712-71-02TW01
SW1	SWITCH	(TF)SWITCH.3S.6P.SOJ.24V.25mA.pitch=1.27mm.180D.SMD.BIWIN.SOJ03-R

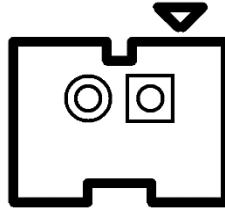
3. Connector Pin Assignments

CN1: MINI PCIE



Pin	Signal Description	Pin	Signal Description
1	WAKE#	2	3.3V
3	NC	4	GND
5	NC	6	1.5V
7	PCIE_CLKREQ#	8	NC
9	GND	10	NC
11	PCIE_CLK_N	12	NC
13	PCIE_CLK_P	14	NC
15	GND	16	NC
17	NC	18	GND
19	NC	20	DISABLE#
21	GND	22	RESET#
23	PCIE_TXN	24	3.3V
25	PCIE_TXP	26	GND
27	GND	28	1.5V
29	GND	30	NC
31	PCIE_RXN	32	NC
33	PCIE_RXP	34	GND
35	GND	36	USB2_DM
37	GND	38	USB2_DP
39	3.3V	40	GND
41	3.3V	42	NC
43	GND	44	NC
45	NC	46	NC
47	NC	48	NC
49	NC	50	GND
51	NC	52	3.3V

CN3: FAN



Pin	Signal Description	Pin	Signal Description
1	5V	2	GND

SW1: Switch



SW Value			Board ID
3	2	1	
Off	Off	Off	0
Off	Off	On	1
Off	On	Off	2
Off	On	On	3
On	Off	Off	4
On	Off	On	5
On	On	Off	6
On	On	On	7