

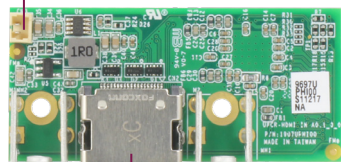
UP HDMI Carrier Board

PRELIMINARY

UP HDMI IN Carrier Board

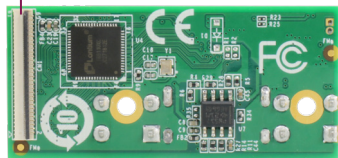
UPCR-HDMI-A10-0001

2-pin power wafer



HDMI

FPC 61-pin



Features

- FPC 61-pin MIPI CSI
- HDMI 2.0



Specifications

System	
I/O	FPC 61-pin MIPI CSI x 1 (Lontium.LT6911UXC) 2-pin Power Wafer x 2 HDMI 2.0 x 1
Dimension	1.9" x 0.9" (49mm x 23mm)
Net Weight	0.44 lb. (0.2Kg)
Gross Weight	0.88 lb. (0.4Kg)
Operating Temperature	32°F ~ 140°F (0°C ~ 60°C), 0.5m/s airflow
Operation Humidity	10% ~ 80% relative humidity, non-condensing
Certification	—

Packing List

- UP HDMI IN Carrier Board
- FPC cable
- Power cable

Ordering Information

Part Number	Description
UPCR-HDMI-A10-0001	HDMI IN carrier board for UP Squared i12, UP Squared Pro 7000, UP Xtreme i12