

UPN Edge Pro

UP Squared Pro Edge System
UPN-EDGE-APL01

User Manual 1st Ed

Copyright Notice

This document is copyrighted, 2021. All rights are reserved. The original manufacturer reserves the right to make improvements to the products described in this manual at any time without notice.

No part of this manual may be reproduced, copied, translated, or transmitted in any form or by any means without the prior written permission of the original manufacturer. Information provided in this manual is intended to be accurate and reliable. However, the original manufacturer assumes no responsibility for its use, or for any infringements upon the rights of third parties that may result from its use.

The material in this document is for product information only and is subject to change without notice. While reasonable efforts have been made in the preparation of this document to assure its accuracy, AAEMON assumes no liabilities resulting from errors or omissions in this document, or from the use of the information contained herein.

AAEMON reserves the right to make changes in the product design without notice to its users.

Acknowledgement

All other products' name or trademarks are properties of their respective owners.

- Microsoft®, Windows® are registered trademarks of Microsoft Corp.
- Intel®, Pentium®, and Celeron® are registered trademarks of Intel Corporation
- Intel Atom™ is a trademark of Intel Corporation
- ITE is a trademark of Integrated Technology Express, Inc.

All other product names or trademarks are properties of their respective owners.

Packing List

Before setting up your product, please make sure the following items have been shipped:

Item	Quantity
● UPN Edge Pro System (UPN-EDGE-APL01)	1

If any of these items are missing or damaged, please contact your distributor or sales representative immediately.

About this Document

This User's Manual contains all the essential information, such as detailed descriptions and explanations on the product's hardware and software features (if any), its specifications, dimensions, jumper/connector settings/definitions, and driver installation instructions (if any), to facilitate users in setting up their product.

Users may refer to the product page at AAEON.com for the latest version of this document.

Safety Precautions

Please read the following safety instructions carefully. It is advised that you keep this manual for future references

1. All cautions and warnings on the device should be noted.
2. Make sure the power source matches the power rating of the device.
3. Position the power cord so that people cannot step on it. Do not place anything over the power cord.
4. Always completely disconnect the power before working on the system's hardware.
5. No connections should be made when the system is powered as a sudden rush of power may damage sensitive electronic components.
6. If the device is not to be used for a long time, disconnect it from the power supply to avoid damage by transient over-voltage.
7. Always disconnect this device from any AC supply before cleaning.
8. While cleaning, use a damp cloth instead of liquid or spray detergents.
9. Make sure the device is installed near a power outlet and is easily accessible.
10. Keep this device away from humidity.
11. Place the device on a solid surface during installation to prevent falls
12. Do not cover the openings on the device to ensure optimal heat dissipation.
13. Watch out for high temperatures when the system is running.
14. Do not touch the heat sink or heat spreader when the system is running
15. Never pour any liquid into the openings. This could cause fire or electric shock.
16. As most electronic components are sensitive to static electrical charge, be sure to ground yourself to prevent static charge when installing the internal components. Use a grounding wrist strap and contain all electronic components in any static-shielded containers.

17. If any of the following situations arises, please the contact our service personnel:
 - i. Damaged power cord or plug
 - ii. Liquid intrusion to the device
 - iii. Exposure to moisture
 - iv. Device is not working as expected or in a manner as described in this manual
 - v. The device is dropped or damaged
 - vi. Any obvious signs of damage displayed on the device
18. **DO NOT LEAVE THIS DEVICE IN AN UNCONTROLLED ENVIRONMENT WITH TEMPERATURES BEYOND THE DEVICE'S PERMITTED STORAGE TEMPERATURES (SEE CHAPTER 1) TO PREVENT DAMAGE.**

Warning!



This device complies with Part 15 FCC Rules. Operation is subject to the following two conditions: (1) this device may not cause harmful interference, and (2) this device must accept any interference received including interference that may cause undesired operation.

Caution:

There is a danger of explosion if the battery is incorrectly replaced. Replace only with the same or equivalent type recommended by the manufacturer. Dispose of used batteries according to the manufacturer's instructions and your local government's recycling or disposal directives.

Attention:

Il y a un risque d'explosion si la batterie est remplacée de façon incorrecte. Ne la remplacer qu'avec le même modèle ou équivalent recommandé par le constructeur. Recycler les batteries usées en accord avec les instructions du fabricant et les directives gouvernementales de recyclage.

产品中有毒有害物质或元素名称及含量

AAEON System

QO4-381 Rev.A0

部件名称	有毒有害物质或元素					
	铅 (Pb)	汞 (Hg)	镉 (Cd)	六价铬 (Cr(VI))	多溴联苯 (PBB)	多溴二苯 醚(PBDE)
印刷电路板 及其电子组件	×	○	○	○	○	○
外部信号 连接器及线材	×	○	○	○	○	○
外壳	○	○	○	○	○	○
中央处理器 与内存	×	○	○	○	○	○
硬盘	×	○	○	○	○	○
液晶模块	×	×	○	○	○	○
光驱	×	○	○	○	○	○
触控模块	×	○	○	○	○	○
电源	×	○	○	○	○	○
电池	×	○	○	○	○	○

本表格依据 SJ/T 11364 的规定编制。

○：表示该有毒有害物质在该部件所有均质材料中的含量均在 GB/T 26572 标准规定的限量要求以下。

×：表示该有害物质的某一均质材料超出了 GB/T 26572 的限量要求，然而该部件仍符合欧盟指令 2011/65/EU 的规范。

备注：

一、此产品所标示之环保使用期限，系指在一般正常使用状况下。

二、上述部件物质中央处理器、内存、硬盘、光驱、电源为选购品。

三、上述部件物质液晶模块、触控模块仅一体机产品适用。

China RoHS Requirement (EN)

Hazardous and Toxic Materials List

AAEON System

QO4-381 Rev.A0

Component Name	Hazardous or Toxic Materials or Elements					
	Lead (Pb)	Mercury (Hg)	Cadmium (Cd)	Hexavalent Chromium (Cr(VI))	Polybrominated biphenyls (PBBS)	Polybrominated ethers (PBDES)
PCB and Components	X	O	O	O	O	O
Wires & Connectors for Ext.Connections	X	O	O	O	O	O
Chassis	O	O	O	O	O	O
CPU & RAM	X	O	O	O	O	O
HDD Drive	X	O	O	O	O	O
LCD Module	X	X	O	O	O	O
Optical Drive	X	O	O	O	O	O
Touch Control Module	X	O	O	O	O	O
PSU	X	O	O	O	O	O
Battery	X	O	O	O	O	O

This form is prepared in compliance with the provisions of SJ/T 11364.

O: The level of toxic or hazardous materials present in this component and its parts is below the limit specified by GB/T 26572.

X: The level of toxic of hazardous materials present in the component exceed the limits specified by GB/T 26572, but is still in compliance with EU Directive 2011/65/EU (RoHS 2).

Notes:

1. The Environment Friendly Use Period indicated by labelling on this product is applicable only to use under normal conditions.
2. Individual components including the CPU, RAM/memory, HDD, optical drive, and PSU are optional.
3. LCD Module and Touch Control Module only applies to certain products which feature these components.

Table of Contents

Chapter 1 - Product Specifications	1
1.1 Specifications	2
Chapter 2 – Hardware Information	4
2.1 Dimensions	5
2.2 Jumpers and Connectors.....	7
2.3 List of Jumpers and Connectors.....	9
2.3.1 RTC Battery (CN1)	10
2.3.2 M.2 E-Key 2230 Slot (CN7)	10
2.3.3 SATA Connector (CN9)	12
2.3.4 SATA Power (CN10).....	12
2.3.5 USB3.2 Gen 1 OTG Port (CN13).....	13
2.3.6 USB2.0/ UART 1x10P Wafer (CN16).....	13
2.3.7 FAN (CN17).....	14
2.3.8 Dual LAN Port (CN18).....	14
2.3.9 40-pin GPIO (HAT40) (CN20).....	15
2.3.10 CPLD and BIOS update (CN22).....	16
2.3.11 DC Jack (CN23)	17
2.3.12 HDMI/ DP Dual Port (CN24)	17
2.3.13 eDP Connector (CN26).....	18
2.3.14 M.2 B-Key 3042/3052 Slot (CN27)	19
2.3.15 M.2 M-Key 2280 Slot (CN28)	21
2.3.16 Audio Jack (CN29)	22
2.3.17 PWR Select 12V (CN31).....	23
2.3.18 PWR Select 24V (CN32)	23
2.3.19 Front Panel Connector (CN34)	23
2.3.20 RS232/ 422/ 485 1x10P Wafer (COM1)	24

2.3.21	RS232/ 422/ 485 1x10P Wafer (COM2)	24
2.3.22	SIM Card Slot (SIM1)	25
2.3.23	Power Button (SW1)	25
2.3.39	USB3.2 Gen 1 Triple Port (3x Type A) (USB1)	26
2.4	Cable List and Pin Assignments	27
2.4.1	COM1 and COM2 RS232/ 422/ 485	27
2.4.2	GPIO1 HAT40 Connector	28
2.5	Connector Index	29
Chapter 3 – Drivers Installation		31
3.1	Driver Download and Installation	32
3.2	Unknown Device Troubleshooting	32
Appendix A – UP Framework SDK Installation		35
A.1	Introduction	36
A.2	Installation for Windows 10	36
A.3	Installation for Windows IoT Core	39
Appendix B – Cables and Connectors		41
B.1	Cables and Connectors	42

Chapter 1

Product Specifications

1.1 Specifications

System

CPU	Intel® Processor SoC (formerly Apollo Lake): Intel® Pentium® N4200 Intel® Celeron® N3350 Intel® Atom™ E3950
Memory	Onboard DDR4, Max 8GB Single Channel: 2GB Dual Channel: 4GB, 8GB
Graphics	Intel® Gen9 HD, supports 4K codec decode and encode for HEC4, H.264, VP8
Storage	eMMC 32GB/ 64GB
Ethernet	2 x RJ-45 Intel® i210
Wi-Fi/ Bluetooth	Optional
Audio	1 x Line out + MIC
USB	3x USB3.2 Gen 1 1 x USB3.2 Gen 1 OTG
Expansion	1 x 40-pin GPIO 1 x M.2 2230 E-key 1 x M.2 2280 M-key 1 x M.2 3042/3052 B-key 1 x SATA III connector (supports 2.5" HDD/SSD)
Power	1 x DC-in Jack 1 x Power Button
Display Port	1 x HDMI 1 x DP1.2
COM	2 x RS-232/ 422/ 485

Environment

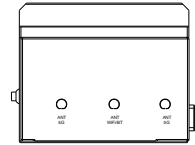
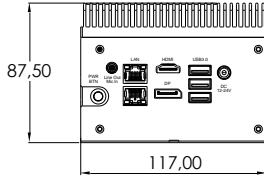
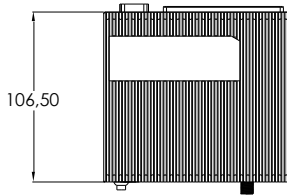
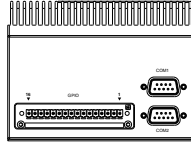
Power Supply	12V~24V
Dimensions	117mm x 106.5mm x 88.8mm
Weight (Gross)	982.5 g
Operating Temperature	0°C ~ 55°C with 0.5 m/s airflow
Vibration	random, 5~500Hz/ 3Grms with eMMC
Shock	half sine, 50G/ 11ms with eMMC
Operating Humidity	0% ~ 90% relative humidity, non-condensing
Certification	CE/FCC Class A RoHS Compliant REACH
OS Support	Microsoft Windows 10, Windows IoT Core Ubuntu 18.04.5, Ubuntu 20.04.1 Yocto 3.1

Chapter 2

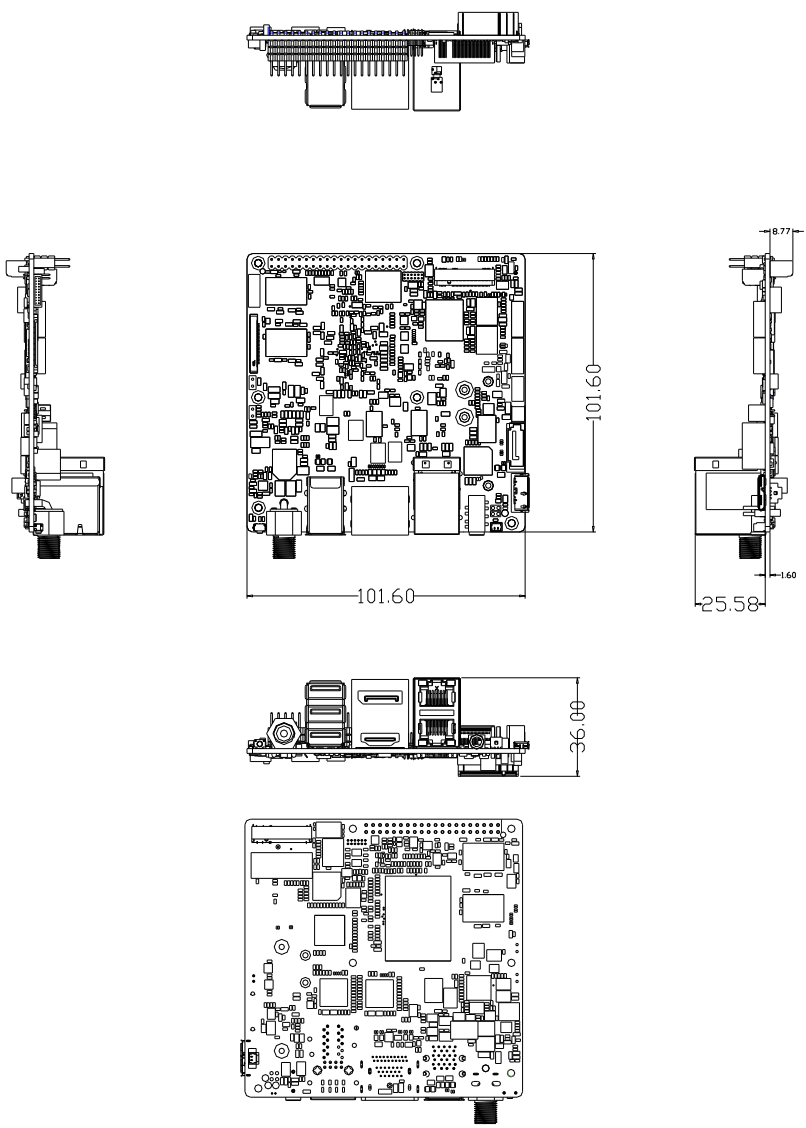
Hardware Information

2.1 Dimensions

System:

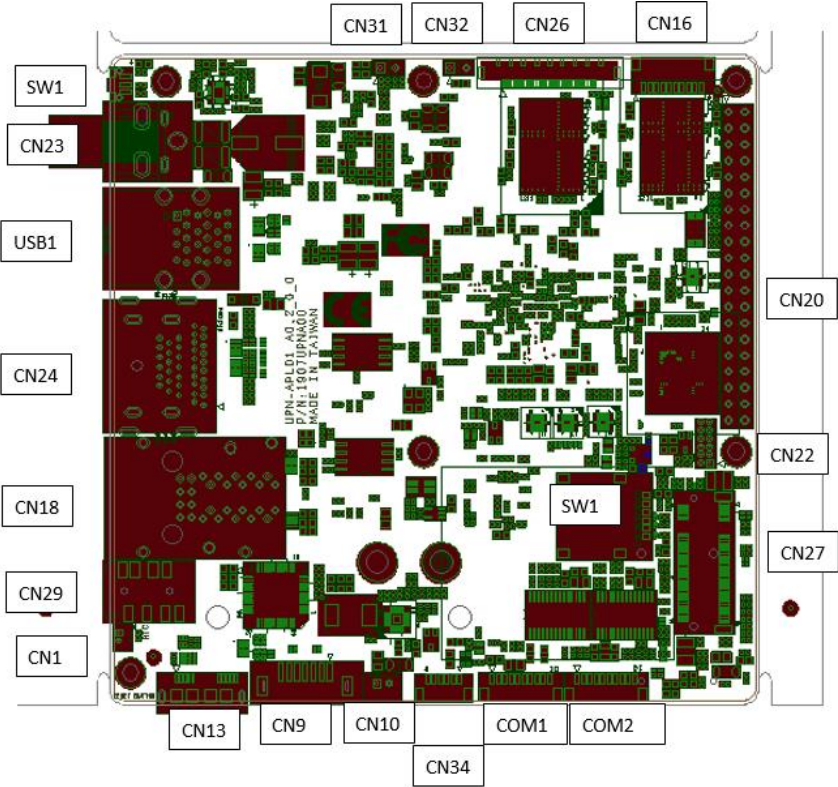


Board:

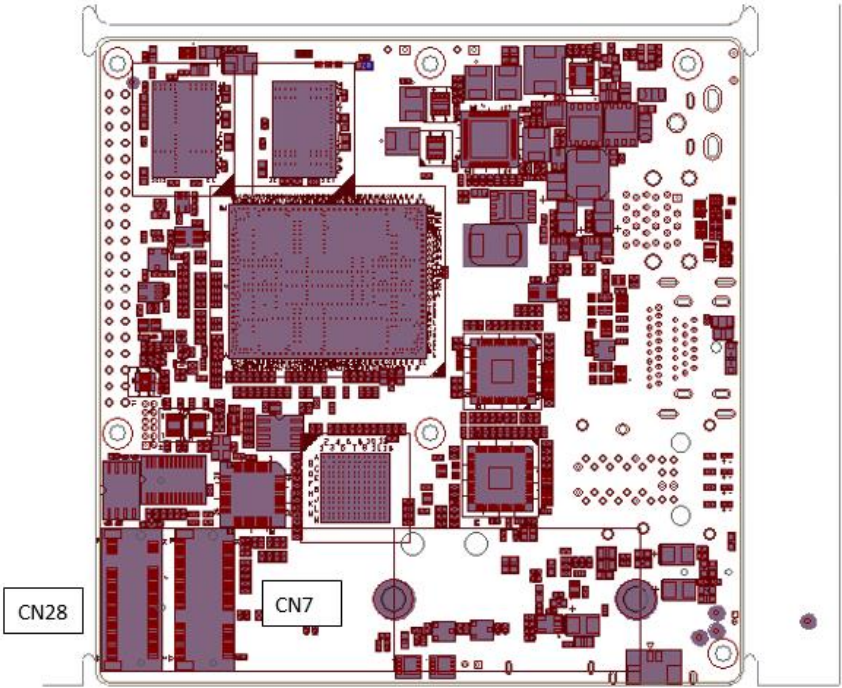


2.2 Jumpers and Connectors

Top:



Bottom:



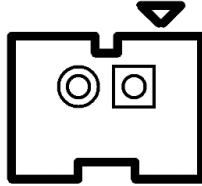
2.3 List of Jumpers and Connectors

Please refer to the table below for all of the board's jumpers that you can configure for your application

Label	Function
CN1	RTC Battery Connector
CN7	M.2 E-Key 2230 Slot
CN9	SATA Connector
CN10	SATA Power
CN13	USB3.2 Gen 1 OTG Port
CN16	USB2.0/ UART 1x10P Wafer
CN17	Fan Connector
CN18	Dual LAN Port
CN20	40-pin GPIO (HAT40)
CN22	CPLD and BIOS update
CN23	DC Jack
CN24	HDMI + DP Port
CN26	eDP Connector
CN27	M.2 B-Key 3042/3052 Slot
CN28	M.2 M-Key 2280 Slot
CN29	Audio Jack
CN31	PWR Select (12V)
CN32	PWR Select (24V)
CN34	Front Panel
COM1	RS232/ 422/ 485 1x10P Wafer
COM2	RS232/ 422/ 485 1x10P Wafer
SIM1	SIM Card Slot
SW1	Power Button

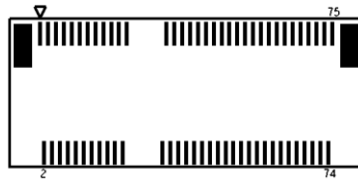
Label	Function
USB1	USB3.2 Gen 1 Triple Port (3x Type A)

2.3.1 RTC Battery (CN1)



Pin	Signal
1	VCC_3V3
2	GND

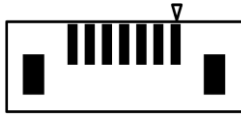
2.3.2 M.2 E-Key 2230 Slot (CN7)



Pin	Signal	Pin	Signal	Pin	Signal
1	GND	2	VCC_3V3	3	USB_D+
4	VCC_3V3	5	USB_D-	6	NC
7	GND	8	NC	9	NC
10	NC	11	NC	12	NC
13	NC	14	NC	15	NC
16	NC	17	NC	18	GND
19	NC	20	NC	21	NC

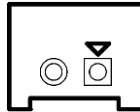
Pin	Signal	Pin	Signal	Pin	Signal
22	NC	23	NC	24	N/A
25	N/A	26	N/A	27	N/A
28	N/A	29	N/A	30	N/A
31	N/A	32	NC	33	GND
34	NC	35	PCIE_TX+	36	NC
37	PCIE_TX-	38	NC	39	GND
40	NC	41	PCIE_RX+	42	NC
43	PCIE_RX-	44	NC	45	GND
46	NC	47	PCIE_CLK+	48	NC
49	PCIE_CLK-	50	SUS_CLK	51	GND
52	PLT_RST#	53	PCIE_CLKREQ#	54	BT_EN
55	PCIE_WAKE#	56	WIFI_EN	57	GND
58	NC	59	NC	60	NC
61	NC	62	NC	63	GND
64	NC	65	NC	66	NC
67	NC	68	NC	69	GND
70	NC	71	NC	72	VCC_3V3
73	NC	74	VCC_3V3	75	GND

2.3.3 SATA Connector (CN9)



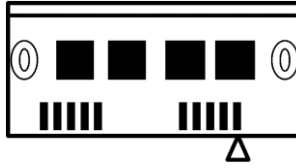
Pin	Signal	Pin	Signal	Pin	Signal
1	GND	2	SATA_TX+	3	SATA_TX-
4	GND	5	SATA_RX-	6	SATA_RX+
7	GND				

2.3.4 SATA Power (CN10)



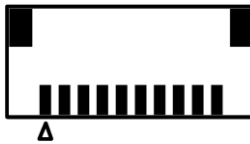
Pin	Signal
1	VCC_5V
2	GND

2.3.5 USB3.2 Gen 1 OTG Port (CN13)



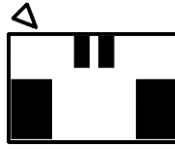
Pin	Signal	Pin	Signal	Pin	Signal
1	VCC_5V	2	USB2_D-	3	USB2_D+
4	ID	5	GND	6	USB3_RX-
7	RSB3_RX+	8	GND	9	USB3_TX-
10	USB3_TX+	11		12	

2.3.6 USB2.0/ UART 1x10P Wafer (CN16)



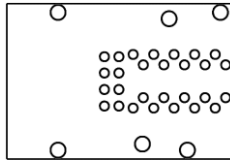
Pin	Signal	Pin	Signal	Pin	Signal
1	VCC_5V	2	USB2_D6-	3	USB2_D6+
4	GND	5	VCC_5V	6	USB2_D7-
7	USB2_D7+	8	GND	9	UART_RXD
10	UART_TXD				

2.3.7 FAN (CN17)



Pin	Signal	Pin	Signal
1	VCC_5V	2	GND

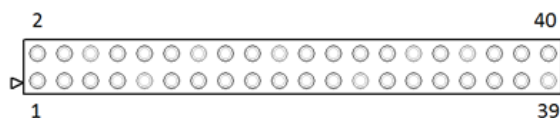
2.3.8 Dual LAN Port (CN18)



Pin	Signal	Pin	Signal
R1A	LAN1_MDIO+	R2A	LAN1_MDIO-
R3A	LAN1_MDI1+	R4A	LAN1_MDI1-
R5A	LAN1_MDI2+	R6A	LAN1_MDI2-
R7A	LAN1_MDI3+	R8A	LAN1_MDI3-
R9A	GND	R10A	GND
L1A	LAN1_ACTLED-	L2A	LAN1_ACTLED+
L3A	LAN1_LINK100#	L4A	LAN1_LINK1000#
R1B	LAN2_MDIO+	R2B	LAN2_MDIO-
R3B	LAN2_MDI1+	R4B	LAN2_MDI1-
R5B	LAN2_MDI2+	R6B	LAN2_MDI2-
R7B	LAN2_MDI3+	R8B	LAN2_MDI3-
R9B	GND	R10B	GND

Pin	Signal	Pin	Signal
L1B	LAN2_ACTLED-	L2B	LAN2_ACTLED+
L3B	LAN2_LINK100#	L4B	LAN2_LINK1000#

2.3.9 40-pin GPIO (HAT40) (CN20)

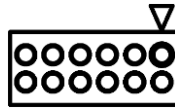


Pin	Signal	Pin	Signal
1	3.3V	2	5V
3	I2C2_DAT/ GPIO1	4	5V
5	I2C2_CLK/ GPIO2	6	GND
7	GPIO3 ANALOG_DATA1/ SPI3_TXD ⁺	8	UART_TX/ GPIO16
9	GND	10	UART_RX/ GPIO17
11	UART_RTS/ GPIO4 ANALOG_DATA2 ⁺	12	I2S6_BCLK/ GPIO18
13	GPIO5 ANALOG_DATA3/ SPI3_RXD ⁺	14	GND
15	GPIO6 ANALOG_DATA4/ SPI3_CS2 ⁺	16	PWM3/ GPIO19
17	3.3V	18	I2S2_SDO/ GPIO20
19	SPI1_TX/ GPIO7	20	GND
21	SPI1_R/ GPIO8	22	I2S2_BCLK/ GPIO21
23	SPI1_CLK/ GPIO9	24	SPI1_CS0/ GPIO22
25	GND	26	SPI1_CS1/ GPIO23
27	I2C1_DAT/ GPIO10 SPI3_CLK ⁺	28	I2C1_CLK/ GPIO24 SPI3_CS0 ⁺

Pin	Signal	Pin	Signal
29	GPIO11 <i>SPI3_CS1+</i>	30	GND
31	I2S2_SDI/ GPIO12	32	PWM0/ GPIO25
33	PWM1 / GPIO13	34	GND
35	I2S6_SYNC/ GPIO14	36	UART_CTS/ GPIO26
37	I2S2_SYNC/ GPIO15	38	I2S6_SDI/ GPIO27
39	GND	40	I2S6_SDO / GPIO28

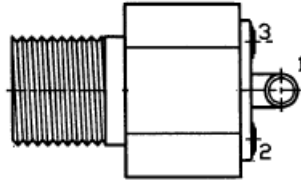
†Note: Apollo Lake-I processors only.

2.3.10 CPLD and BIOS update (CN22)



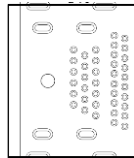
Pin	Signal	Pin	Signal	Pin	Signal
1	JTAG_TCK	2	GND	3	JTAG_TDO
4	VCC_1V8	5	JTAG_TMS	6	SPI_CS
7	SPI_CLK	8	SPI_MISO	9	JTAG_TDI
10	GND	11	SPI_MOSI	12	SPI_HOLD

2.3.11 DC Jack (CN23)



Pin	Signal	Pin	Signal	Pin	Signal
1	DC_IN	2	GND	3	GND

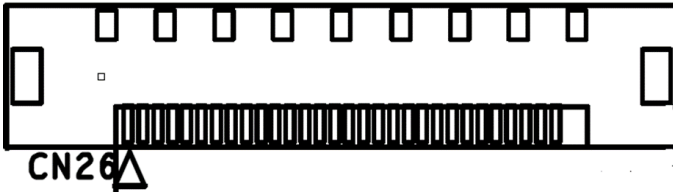
2.3.12 HDMI/ DP Dual Port (CN24)



Pin	Signal	Pin	Signal
P1	DP_TXP0	P2	GND
P3	DP_TXN0	P4	DP_TXP1
P5	GND	P6	DP_TXN1
P7	DP_TXP2	P8	GND
P9	DP_TXN2	P10	DP_CLK+
P11	GND	P12	DP_CLK-
P13	CONFIG1	P14	CONFIG2
P15	DP_AUX_P	P16	GND
P17	DP_AUX_N	P18	DP_HPD
P19	GND	P20	VCC_3V3
P21	HDMI_TXP0	P22	GND

Pin	Signal	Pin	Signal
P23	HDMI_TXN0	P24	HDMI_TXP1
P25	GND	P26	HDMI_TXN1
P27	HDMI_TXP2	P28	GND
P29	HDMI_TXN2	P30	HDMI_CLK+
P31	GND	P32	HDMI_CLK-
P33	HDMI1_CEC	P34	NC
P35	DDC_CLK	P36	DDC_DATA
P37	GND	P38	VCC_5V
P39	HDMI_HPD		

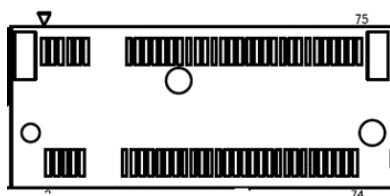
2.3.13 eDP Connector (CN26)



Pin	Signal	Pin	Signal
1	VCC_3V3	2	VCC_3V3
3	GND	4	GND
5	EDP_TXN_2	6	EDP_TXP_2
7	GND	8	EDP_TXN_1
9	EDP_TXP_1	10	GND
11	EDP_TXN_0	12	EDP_TXP_0
13	GND	14	EDP_TXN_3
15	EDP_TXP_3	16	GND
17	EDP_AUXN	18	EDP_AUXP

Pin	Signal	Pin	Signal
19	GND	20	BKLT_CTRL
21	NC	22	BKLT_EN
23	EDP_HPD	24	GND
25	GND	26	GND
27	VCC_12V/VCC_24V	28	VCC_12V/VCC_24V
29	VCC_12V/VCC_24V	30	VCC_12V/VCC_24V
31	GND	32	GND
33	GND	34	GND
35	GND	36	GND
37	GND	38	GND
39	GND	40	GND
41	GND		

2.3.14 M.2 B-Key 3042/3052 Slot (CN27)

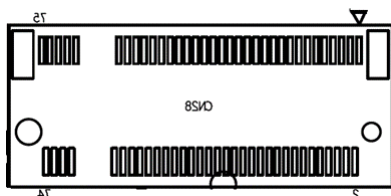


Pin	Signal	Pin	Signal
1	NC	2	VCC_3V3
3	GND	4	VCC_3V3
5	GND	6	FULL_CARD_POWER_OFF#
7	USB2_D5+	8	W_DISABLE#1
9	USB2_D5-	10	NC
11	GND	12	NA

Pin	Signal	Pin	Signal
13	NA	14	NA
15	NA	16	NA
17	NA	18	NA
19	NA	20	NC
21	NC	22	NC
23	NC	24	NC
25	NC	26	NC
27	GND	28	NC
29	USB3_RX-	30	UIM_RST
31	USB3_RX+	32	UIM_CLK
33	GND	34	UIM_DAT
35	USB3_TX-	36	UIM_PWR
37	USB3_TX+	38	NC
39	GND	40	NC
41	NC	42	NC
43	NC	44	NC
45	GND	46	NC
47	NC	48	NC
49	NC	50	PLT_RST#(3V3)
51	GND	52	TP
53	PCIE_CLK-	54	PCIE_WAKE#
55	NC	56	NC
57	GND	58	NC
59	NC	60	NC
61	NC	62	NC
63	NC	64	NC
65	NC	66	NC

Pin	Signal	Pin	Signal
67	PLT_RST#(1V8)	68	SUSCLK
69	NC	70	VCC_3V3
71	GND	72	VCC_3V3
73	GND	74	VCC_3V3
75	GND		

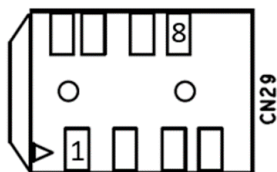
2.3.15 M.2 M-Key 2280 Slot (CN28)



Pin	Signal	Pin	Signal	Pin	Signal
1	GND	2	VCC_3V3	3	GND
4	VCC_3V3	5	NC	6	NC
7	NC	8	NC	9	GND
10	NC	11	NC	12	VCC_3V3
13	NC	14	VCC_3V3	15	GND
16	VCC_3V3	17	NC	18	VCC_3V3
19	NC	20	NC	21	GND
22	NC	23	NC	24	NC
25	NC	26	NC	27	GND
28	NC	29	NC	30	NC
31	NC	32	NC	33	GND
34	NC	35	NC	36	NC
37	NC	38	DEVS LP	39	GND

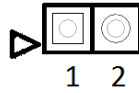
Pin	Signal	Pin	Signal	Pin	Signal
40	NC	41	PCIE_RX-	42	NC
43	PCIE_RX+	44	NC	45	GND
46	NC	47	PCIE_TX-	48	NC
49	PCIE_TX+	50	PLT_RST#	51	GND
52	PCIE_CLKREQ#	53	PCIE_CLK-	54	PCIE_WAKE#
55	PCIE_CLK+	56	NC	57	GND
58	NC	59	NA	60	NA
61	NA	62	NA	63	NA
64	NA	65	NA	66	NA
67	NC	68	SUSCLK	69	NC
70	VCC_3V3	71	GND	72	VCC_3V3
73	GND	74	VCC_3V3	75	GND

2.3.16 Audio Jack (CN29)



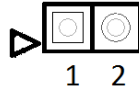
Pin	Signal	Pin	Signal	Pin	Signal
1	MIC_L/R	2	GND	3	FRONT_R
4	NC	5	GND	6	AUDIO-JD
7	NC	8	FRONT_L		

2.3.17 PWR Select 12V (CN31)



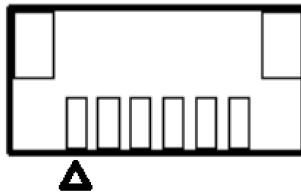
Pin	Signal
1	12V
2	GND

2.3.18 PWR Select 24V (CN32)



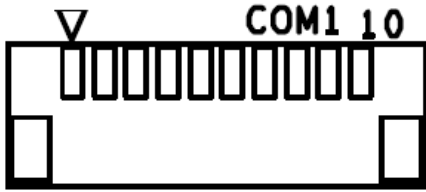
Pin	Signal
1	24V
2	GND

2.3.19 Front Panel Connector (CN34)



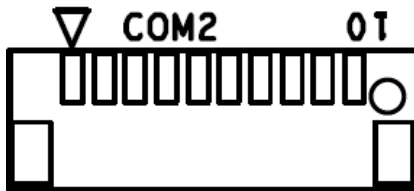
Pin	Signal	Pin	Signal
1	GND	2	RESET
3	GND	4	POWER S/W
5	GND	6	+3.3V

2.3.20 RS232/ 422/ 485 1x10P Wafer (COM1)



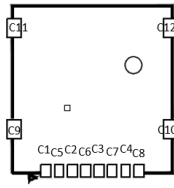
Pin	Signal	Pin	Signal
1	DCD / RS422TX- / S485-	2	RX / RS422TX+ / RS485+
3	TX / RS422RX+	4	DTR / RS422RX-
5	GND	6	DSRA
7	RTSA	8	CTSA
9	RIA	10	NC

2.3.21 RS232/ 422/ 485 1x10P Wafer (COM2)



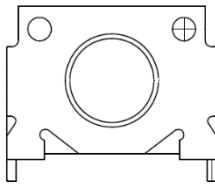
Pin	Signal	Pin	Signal
1	DCD / RS422TX- / S485-	2	RX / RS422TX+ / RS485+
3	TX / RS422RX+	4	DTR / RS422RX-
5	GND	6	DSRB
7	RTSB	8	CTSB
9	RIB	10	NC

2.3.22 SIM Card Slot (SIM1)



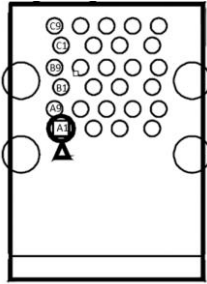
Pin	Signal	Pin	Signal	Pin	Signal
C1	UIM_PWR	C2	UIM_RST	C3	UIM_CLK
C4	NC	C5	GND	C6	UIM_VPP
C7	UIM_DAT	C8	NC	C9	GND
C10	GND	C11	GND	C12	GND

2.3.23 Power Button (SW1)



Switch Position	Function
SW1 1	(default)
SW1 0	Power ON

2.3.39 USB3.2 Gen 1 Triple Port (3x Type A) (USB1)

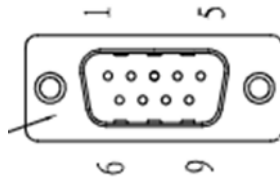


Pin	Signal	Pin	Signal	Pin	Signal
A1	VCC_5V	A2	USB2_D1-	A3	USB2_D1+
A4	GND	A5	USB3_RX1-	A6	USB3_RX1+
A7	GND	A8	USB3_TX1-	A9	USB3_TX1+
B1	VCC_5V	B2	USB2_D2-	B3	USB2_D2+
B4	GND	B5	USB3_RX2-	B6	USB3_RX2+
B7	GND	B8	USB3_TX2-	B9	USB3_TX2+
C1	VCC_5V	C2	USB2_D3-	C3	USB2_D3+
C4	GND	C5	USB3_RX3-	C6	USB3_RX3+
C7	GND	C8	USB3_TX3-	C9	USB3_TX3+
H1	GND	H2	GND	H3	GND
H4	GND				

2.4 Cable List and Pin Assignments

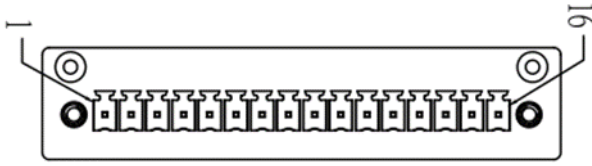
Label	Part Number	Description
COM1	1701100180	(TF)COM Cable.D-SUB 9P(M).10P1.0mm Housing.15cm
COM2	1701100180	(TF)COM Cable.D-SUB 9P(M).10P1.0mm Housing.15cm
RTC	175011301K	(TF)Lithium Battery.CR2032H.3V.240mAH.w/cable 90mm.Battery power.BP-CR2032-M90-001
GPIO1	1703401301	(TF)WIRE.16Pto 40Pin.130mm.Housing.for FWAA-1218
PWR BNT	170X000306	(TF)Cable.to 6P 1.00mm housing.Power switch cable.SW w/green LED.20cm.FLYINGWAY.FWAA-1348

2.4.1 COM1 and COM2 RS232/ 422/ 485



Pin	Signal	Pin	Signal
1	DCDA / RS422TX- / S485-	2	RXA / RS422TX+ / RS485+
3	TXA / RS422RX+	4	DTRA / RS422RX-
5	GND	6	DSRA
7	RTSA	8	CTSA
9	RIA	10	

2.4.2 GPIO1 HAT40 Connector



Pin	Signal	Pin	Signal
1	PIN1 (3.3V)	2	PIN2 (5V)
3	PIN3 (I2C_SDA)	4	PIN5 (I2C_SCL)
5	PIN6 (GND)	6	PIN9 (GND)
7	PIN12 (GPIO)	8	PIN13 (GPIO)
9	PIN15 (GPIO)	10	PIN16 (GPIO)
11	PIN18 (GPIO)	12	PIN19 (GPIO)
13	PIN21 (GPIO)	14	PIN22 (GPIO)
15	PIN32 (PWM0)	16	PIN33 (PWM1)

2.5 Connector Index

Label	Function	Connector Type
CN1	RTC	(TF)WAFER BOX.2P180D(M).DIP.1.25mm.PINREX.712-71-02TW01
CN7	M.2 E-KEY	(TF)M.2 Key-E Slot.H=4.0mm conn.75P90D(F).BLACK.SMD.FOXCONN.AS0BC21-S40BE-7H
CN9	SATA CONN	(TF)SATA CONNECTOR.7P180D(M).SMT.TechBest.007-01-00757
CN10	SATA POWER	(TF)WAFER BOX.2P180D(M).DIP2.0mm.w/LOCK.PINREX.721-81-02TW00
CN13	USB3 OTG	(TF)Micro USB 3.0 Conn..10P90D(M).SMD.B-type.ATTEND.209E-BE01
USB1	USB3 TRIPLE PORT	(TF)USB CONN..DIP.USB3.0 TRIPLE PORT.27P90D.FEMALE.Standard.Type A.3.0.Dual.FOXCONN.UEA11123-MHD1-4F
CN16	USB2.0/ UART 1x10P Wafer	(TF)Wafer Box.10P90D(M).SMD.1.0mm.CATCH.1204-700-10RM
CN17	FAN	(TF)WAFER.2P180D(M).SMD.1.25mm.W/Cap.PINREX.712-73-02TWE0
CN18	LAN DUAL PORT	(TF)GIGA RJ45.28P90D(F).W/TF&LED.DAUL PORT.DIP.UDE.RM3-169A9V1Q
CN20	HAT40	(TF)PIN HEADER.20*2P180D(M).DIP2.54mm.JVE.21N22564-40S20B-01G-5.5/3.3
CN22	CPLD and BIOS update	(TF)PIN HEADER.6*2P180D(M).DIP1.27mm.Astron.27-4121-206-1G-R
CN23	DC JACK	(TF)DC Power Jack.3P90D(F).DIP.COXOC.416AEDCD020105B
CN24	HDMI + DP PORT	(TF)HDMI/DP combo Port conn..39P90D(F).DIP.FOXCONN.3VD11203-HHJ0-4H
CN26	eDP	(TF)Board-Wire Conn.30P90D(F).0.5mm.SMD.KEL.SSL00-30L3
CN27	M.2 B-KEY	(AOH)(TF)M 2 Key-B Slot.75P90D(F).SMD.H=8.5mm conn.FOXCONN.AS0BC21-S85BB-7H
CN28	M.2 M-KEY	(TF)M.2 Key-M Slot.75P90D(F).Standard type.BLACK.SMD.H=8.5mm conn.FOXCONN.2E0BC21-S85BM-7H
CN29	AUDIO	(TF)Audio Jack.8P90D(F).SMD.Astron.E35S16AA-8S-R
CN31	PWR SEL(12V)	(TF)PIN HEADER.2*1P180D(M).2.54mm.DIP
CN32	PWR	(TF)PIN HEADER.2*1P180D(M).2.54mm.DIP

Label	Function	Connector Type
	SEL(24V)	
CN34	Front Panel	(TF)Wafer Box.6P:180D.(M).SMD.1.0mm.w/ CAPCATCH.1204-700-06SMR
SIM1	SIM card	(TF)Nano SIM Card Connector.3P*2.Hinge Type.SMD.SUNFUN.SMHN-SO1(01T)
COM1	RS232 / 422 / 485 1x10P Wafer	(TF)Wafer Box.10P:180D(M).SMD.1.0mm.w/ CAPCATCH.1204-700-10SMR
COM2	RS232 / 422 / 485 1x10P Wafer	(TF)Wafer Box.10P:180D(M).SMD.1.0mm.w/ CAPCATCH.1204-700-10SMR
SW1	POWER BUTTON	(TF)Push Button Switch.3P:12VDC.50mA.500mohm.Black.SMD.HCH.PTS-099

Chapter 3

Drivers Installation

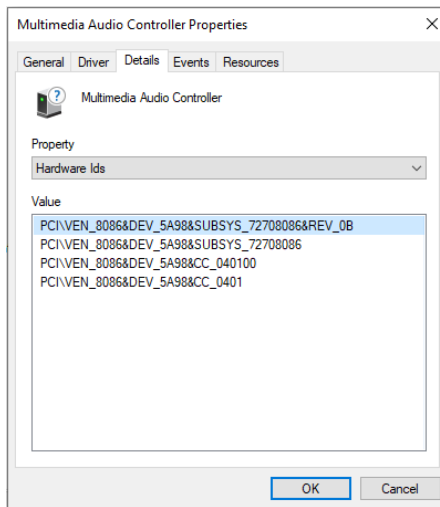
3.1 Driver Download and Installation

Please access <https://www.up-community.org> and go to the Downloads section > UPN Edge to find the relevant drivers.

3.2 Unknown Device Troubleshooting

After installing the drivers on Windows 10, you may see five unknown devices in the device manager. Follow the steps below to resolve each issue:

Multimedia Audio Controller

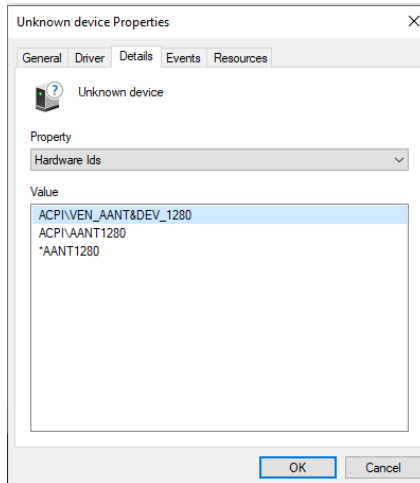
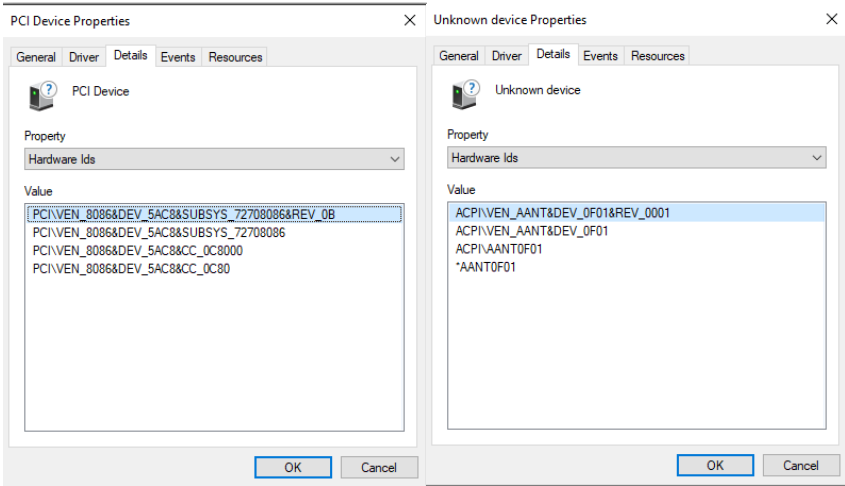


Go into the device BIOS Settings. Navigate the menus as follows:

Chipset -> South Bridge -> HD-Audio Configuration

Find **HD-Audio DSP** and change the setting to "disable."

PCI Device (8086&DEV_5AC8), Unknown Device (AANT0F01), and
VEN_AANT&DEV_1280



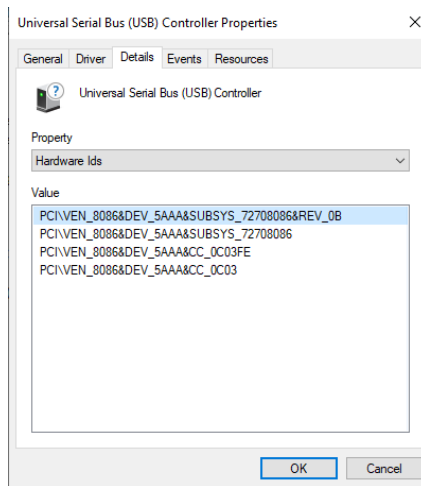
Go into the device BIOS Settings. Navigate to the **Boot** menu. Change **OS Selection** to "Windows."

PCI Device: The unknown PCI device is the PWM signal. It is provided directly from the Apollo Lake chipset, but Intel has not released a Windows driver for this device. This PCI device is not available for Windows 10, it is only supported by Linux.

VEN_AANT&DEV_1280: This is the ADC for Linux, there is no Windows driver. This can be ignored. (Note: error only occurs with Atom E3950 processor SoC)

AANT0F01: This is the FPGA device for Linux.

Unknown USB Control (8086 5AAA)



This refers to the USB OTG functionality on the Micro USB port. There is no driver available for Windows 10. The function is only available on Linux.

Appendix A

UP Framework SDK Installation

A.1 Introduction

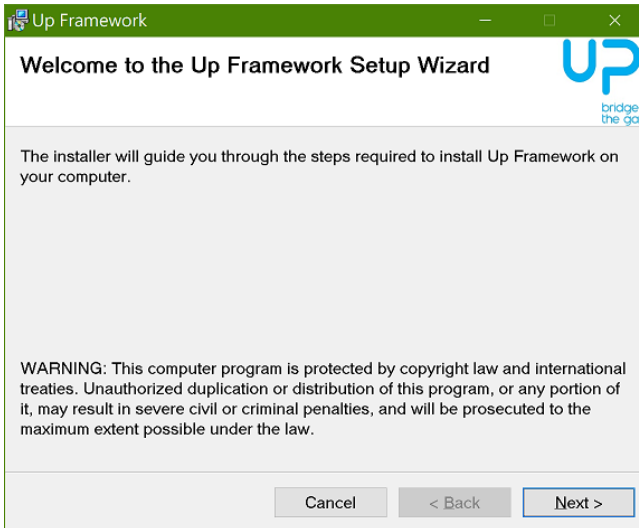
This section provides instructions for the installation of the UP Framework SDK. Instructions are provided for Windows 10 and Windows IoT Core. You can download the latest version of UP Framework SDK from the UP community:

<https://downloads.up-community.org/download/up-sdk-for-windows-10-and-windows-iot/>

A.2 Installation for Windows 10

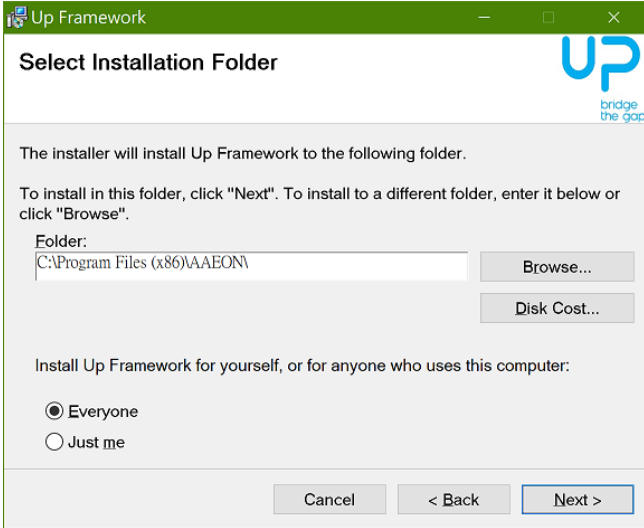
Step 1

Locate the downloaded file UpFrameworkSetup.msi and run the installer. Press “Next” to begin the setup process.



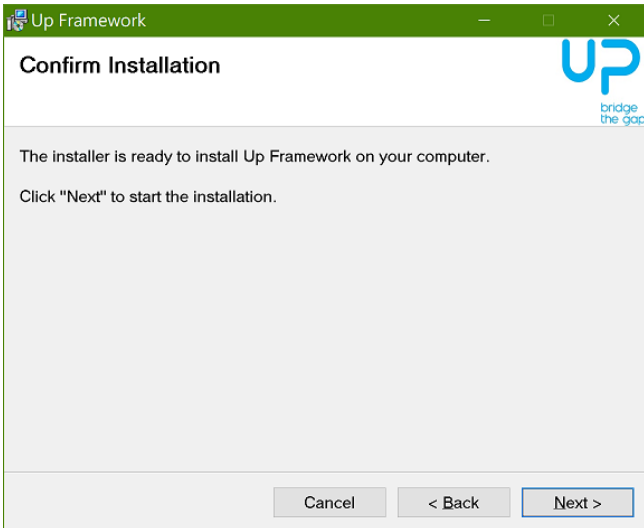
Step 2

Select the installation folder. Default destination path is C:\Program Files(x86)\AAEON\
You may also choose to install the UP Framework SDK for all users or only the current user. Press "Next" to continue installation.



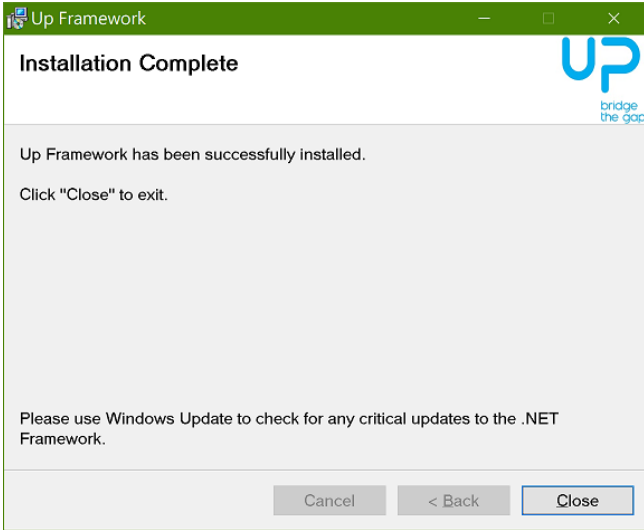
Step 3

Press "Next" to confirm the installation.



Step 4

Press "Close" to exit once setup is complete.



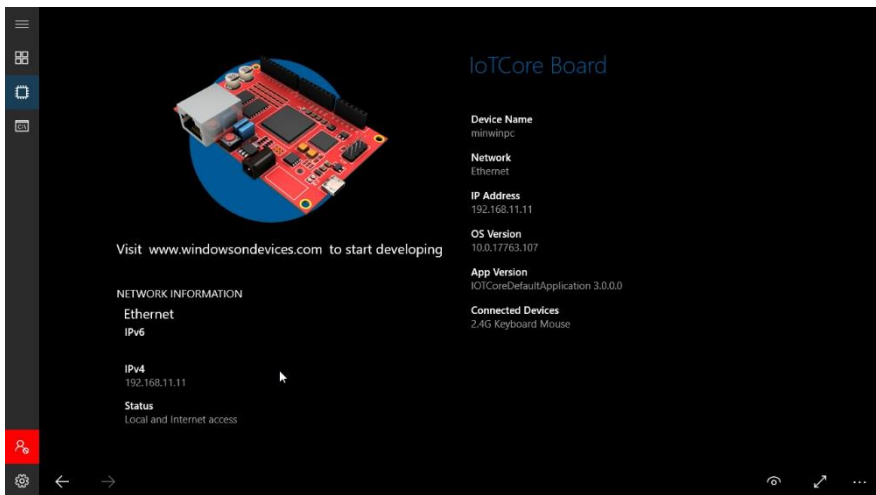
A.3 Installation for Windows IoT Core

Before you begin, make sure you have downloaded and installed the latest version of the Windows IoT Core image from the UP community.

Installation requires using a connected PC with the UP Framework SDK software downloaded and saved. **Note:** Make sure the UP IoT Core device is connected to the same network as the PC you are using to install the software from.

Step 1

Turn on your UP IoT Core device and note the IP address at the home screen.



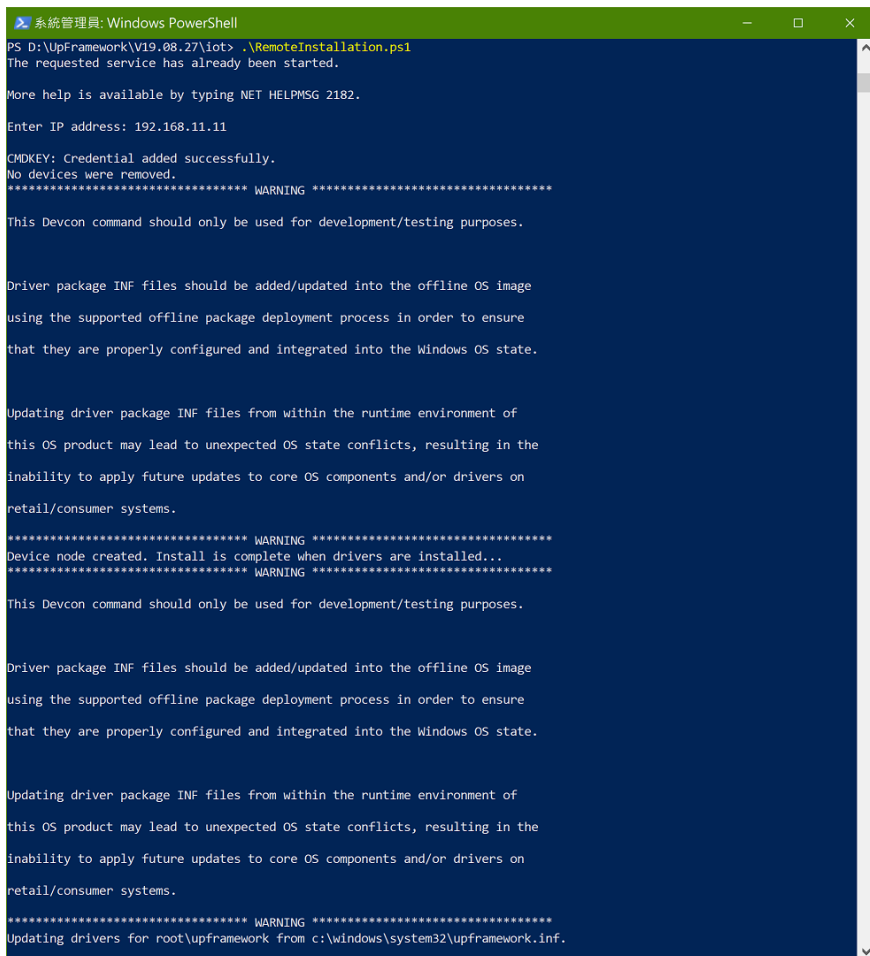
Step 2

Download the UP Framework SDK to your PC and unzip the files.

Open PowerShell as an Administrator. Run the command

RemoteInstallation.ps1 to install the UP Framework SDK.

Enter the IP address of the UP IoT Core device when prompted.



```
系統管理員: Windows PowerShell
PS D:\UpFramework\1910827\iot> .\RemoteInstallation.ps1
The requested service has already been started.

More help is available by typing NET HELPMSG 2182.

Enter IP address: 192.168.11.11

CMDKEY: Credential added successfully.
No devices were removed.
***** WARNING *****

This Devcon command should only be used for development/testing purposes.

Driver package INF files should be added/updated into the offline OS image
using the supported offline package deployment process in order to ensure
that they are properly configured and integrated into the Windows OS state.

Updating driver package INF files from within the runtime environment of
this OS product may lead to unexpected OS state conflicts, resulting in the
inability to apply future updates to core OS components and/or drivers on
retail/consumer systems.

***** WARNING *****
Device node created. Install is complete when drivers are installed...
***** WARNING *****

This Devcon command should only be used for development/testing purposes.

Driver package INF files should be added/updated into the offline OS image
using the supported offline package deployment process in order to ensure
that they are properly configured and integrated into the Windows OS state.

Updating driver package INF files from within the runtime environment of
this OS product may lead to unexpected OS state conflicts, resulting in the
inability to apply future updates to core OS components and/or drivers on
retail/consumer systems.

***** WARNING *****
Updating drivers for root\upframework from c:\windows\system32\upframework.inf.
```

Appendix B

Cables and Connectors

B.1 Cables and Connectors

This table provides detailed information about the cables and connectors used by the UPN Edge Pro (UPN-EDGE-APL01). If you have any questions about the configuration of your board, please contact your AAEON sales representative.

Label	Connector PN	Function Description	Mating Cable PN	Mating Cable Description
CN1	1655902034	RTC battery connector	175011301K	Lithium Battery.CR2032H.3V.240mAH. w/cable 90mm. DIPBattery power.BP CR2032 M90 001
CN7	1654207533	M.2 E-KEY	N/A	
CN9	1654907009	SATA CONN	N/A	
CN10	1655302025	SATA POWER	N/A	
CN13	1654801033	USB3 OTG	N/A	
USB1	16548X0002	USB3 TRIPLE PORT	N/A	
CN16	1655810131	USB2.0 UART 1x10P Wafer	N/A	
CN17	1655802020	FAN	N/A	
CN18	1652828204	LAN DUAL PORT	N/A	
CN20	165302020L	HAT40	1703401301	(TF)WIRE.16Pto 40Pin.130mm.Housing.for FWAA-1218
CN22	1653006205	CPLD and BIOS update	N/A	
CN23	165250320K	DC JACK	N/A	
CN24	1654403931	HDMI + DP PORT	N/A	
CN26	1653530130	eDP	N/A	
CN27	1654207536	M.2 B-KEY	N/A	
CN28	165420753B	M.2 M-KEY	N/A	
CN29	1652708203	AUDIO	N/A	

Label	Connector PN	Function Description	Mating Cable PN	Mating Cable Description
CN31	1653002100	PWR SEL(12V)	N/A	
CN32	1653002100	PWR SEL(24V)	N/A	
CN34	1655906033	Front Panel	170X000306	(TF)Cable.to 6P 1.00mm housing.Power switch cable.SW w/green LED.20cm.FLYINGWAY.FWAA-1348
SIM1	1654900693	SIM card	N/A	
COM1	1655901000	RS232 / 422 / 485 1x10P Wafer	1701100180	(TF)COM Cable.D-SUB 9P(M).10P1.0mm Housing.15cm
COM2	1655901000	RS232 / 422 / 485 1x10P Wafer	1701100180	(TF)COM Cable.D-SUB 9P(M).10P1.0mm Housing.15cm
SW1	1601000990	POWER BUTTON	N/A	