



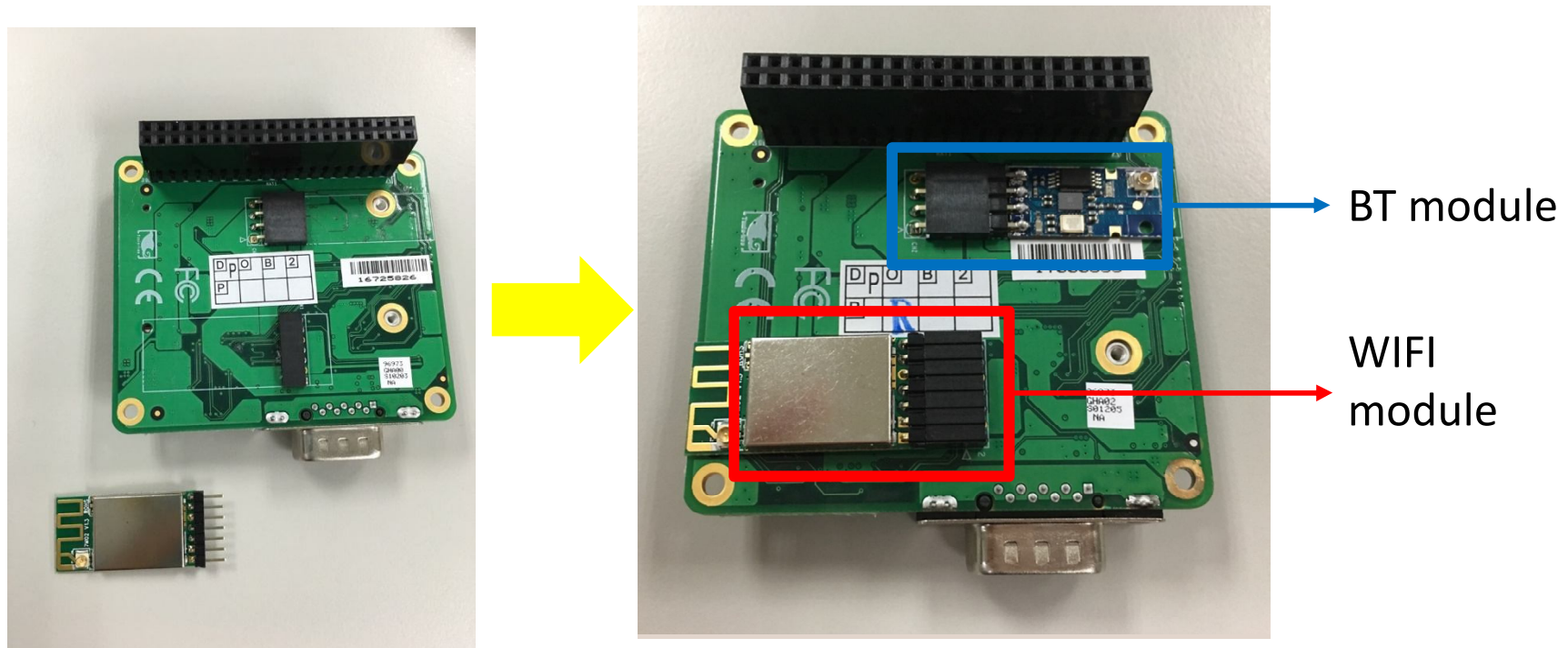
UP-3GHAT01 WIFI_BT Module Installation SOP

Presenter : Rscar Huang
Date : 2017.04.07

UP-3GHAT01

WIFI_BT module Installation SOP

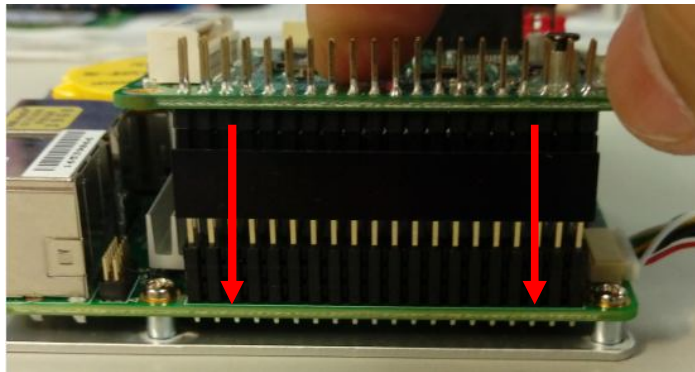
Step 1 : Insert WIFI or BT module per image illustrated



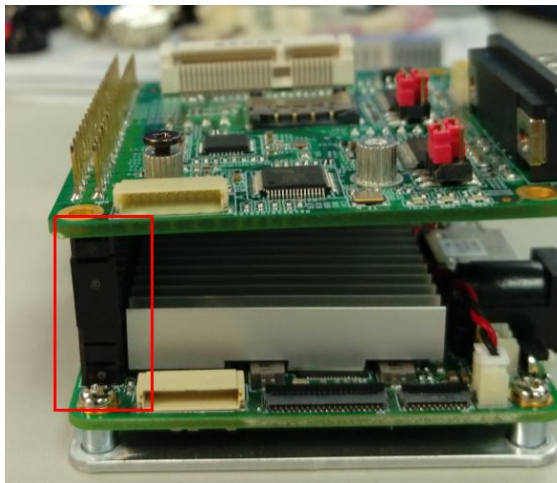
UP-3GHAT01

WIFI_BT module Installation SOP

Step 2 : Insert the pin on 3G Board to UP Board pin header via 40 HAT pin



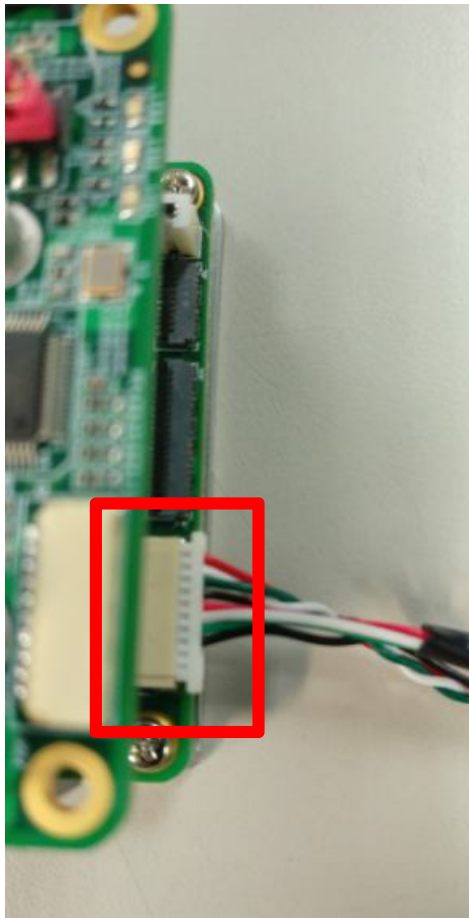
Step 3 : Double confirm each pin are well attached firmly



UP-3GHAT01

WIFI_BT module Installation SOP

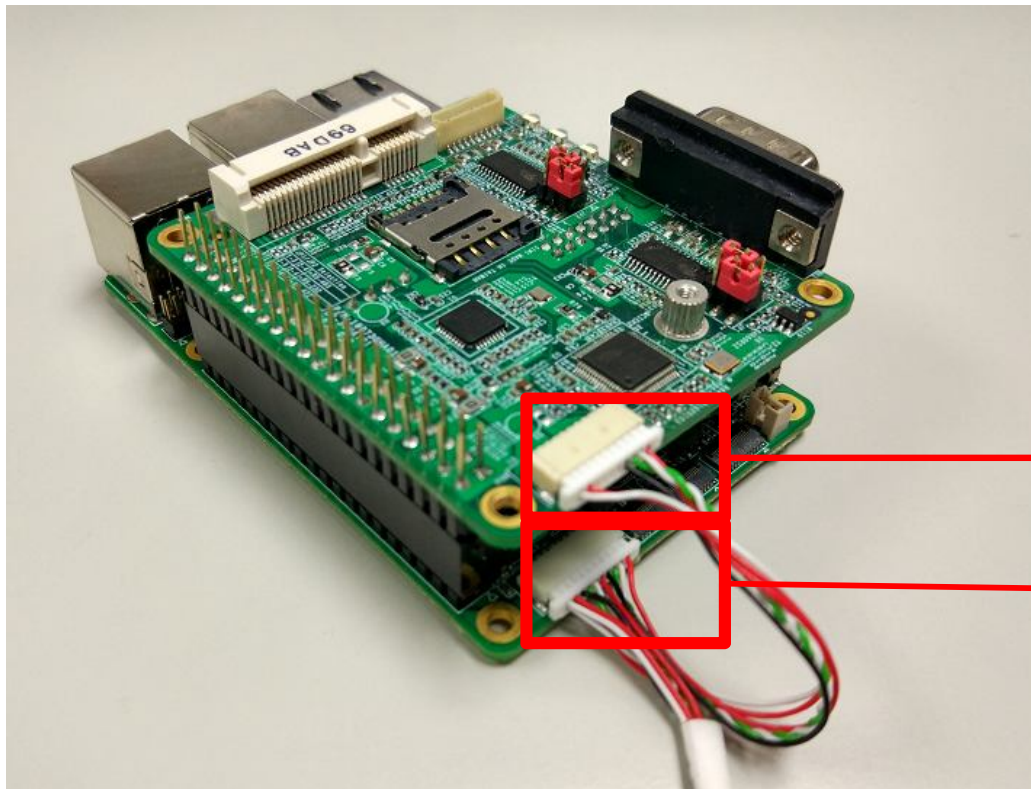
Step 4 : Insert USB Y cable firmly to UP board and 3G board separately and make sure USB connector on USB is inserted correctly



UP-3GHAT01

WIFI_BT module Installation SOP

Step 5 make sure USB connector on USB is inserted correctly



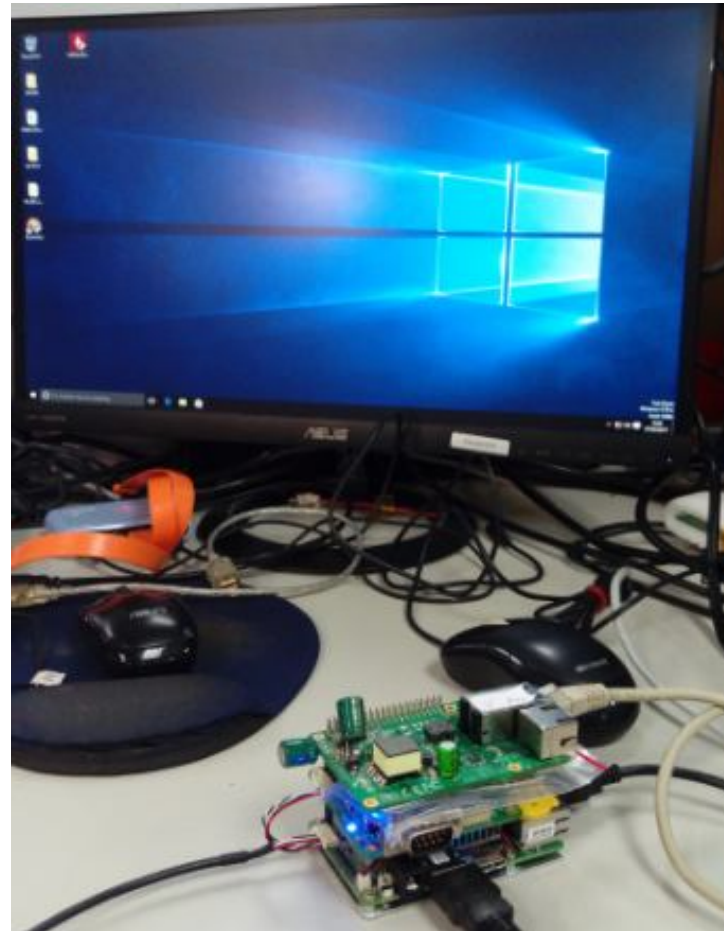
Connector to 3G HAT

Connector to UP

UP-3GHAT01

WIFI_BT module Installation SOP

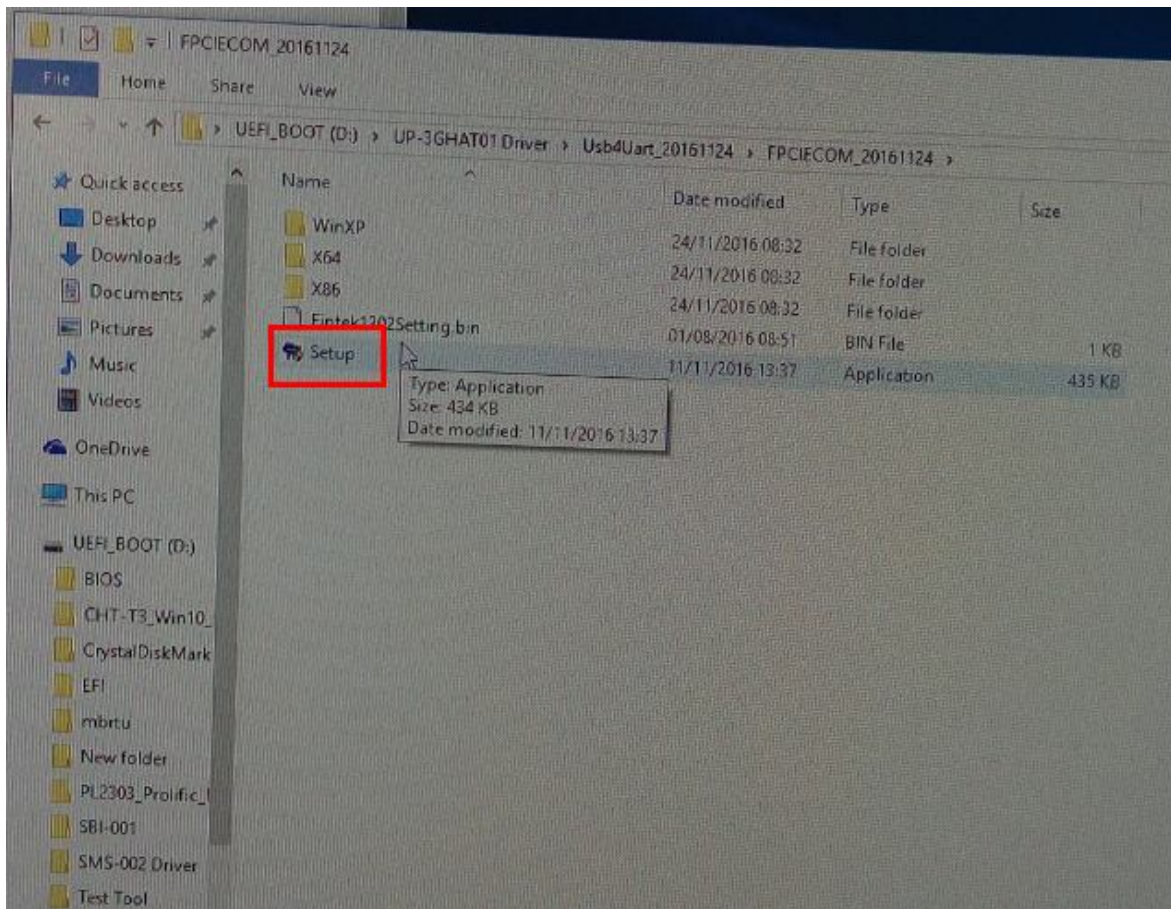
Step 5 : Switch on UP board and it will access to OS after it well installed



UP-3GHAT01

WIFI_BT module Installation SOP

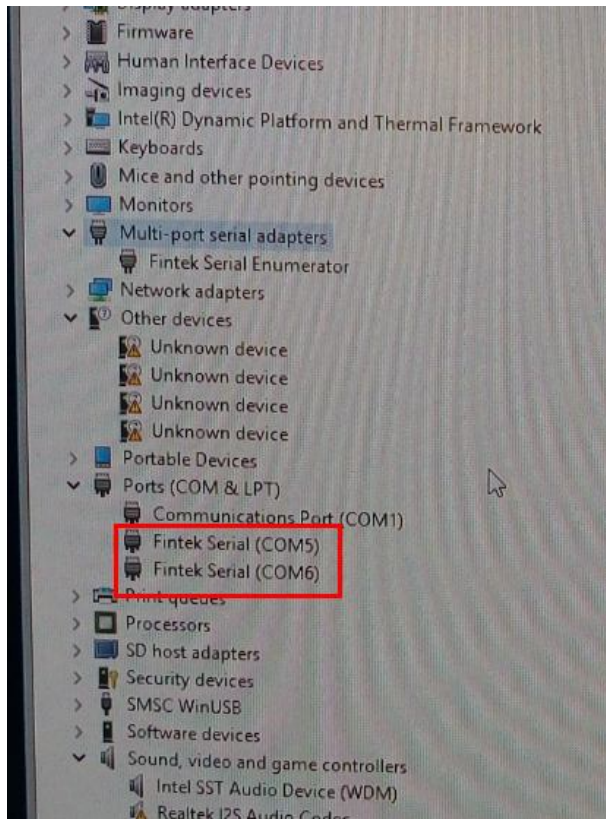
Step 6 : Double click Setup for installation



UP-3GHAT01

WIFI_BT module Installation SOP

Step 7 : Access to device and make sure there is no yellow mark by mark red, and you are able to enable WIFI or BT module with success



Thank You