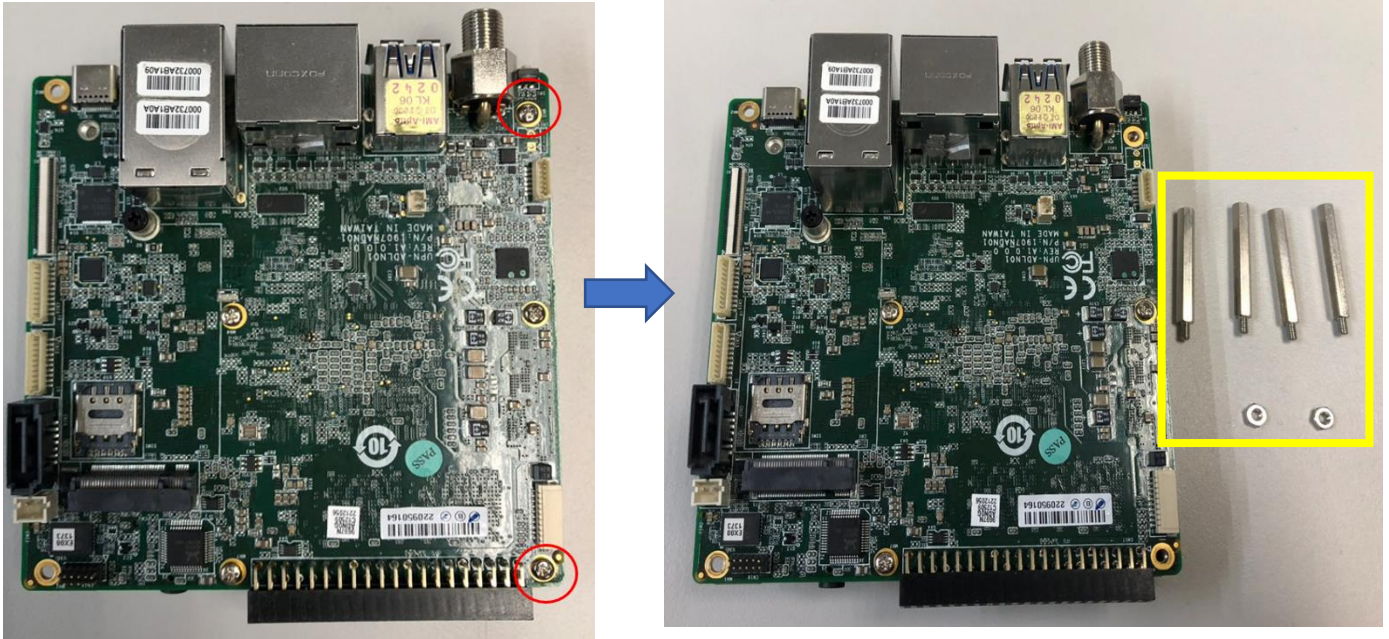
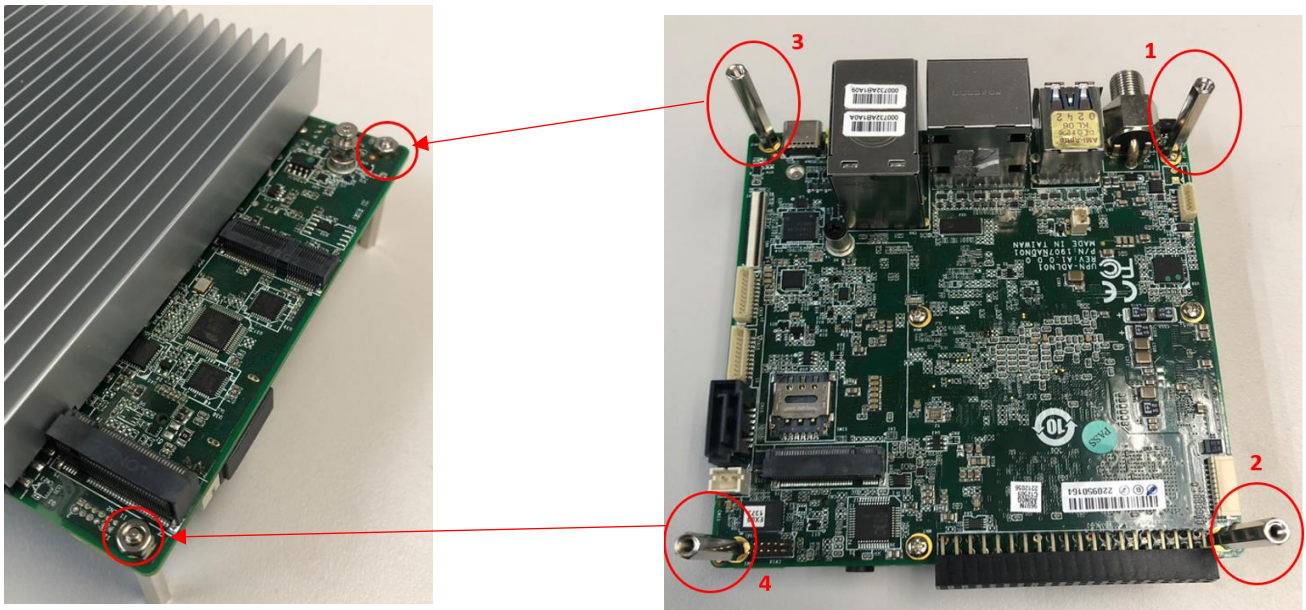


Step 1: Remove the two (2) screws from the outer edges of the board.

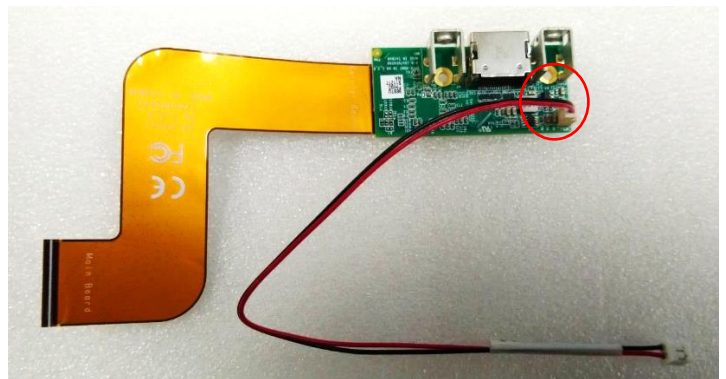
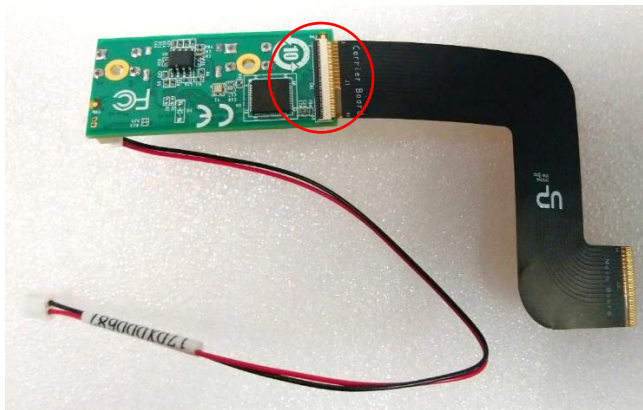


\*yellow mark is from UPN 7000 accessories bag.

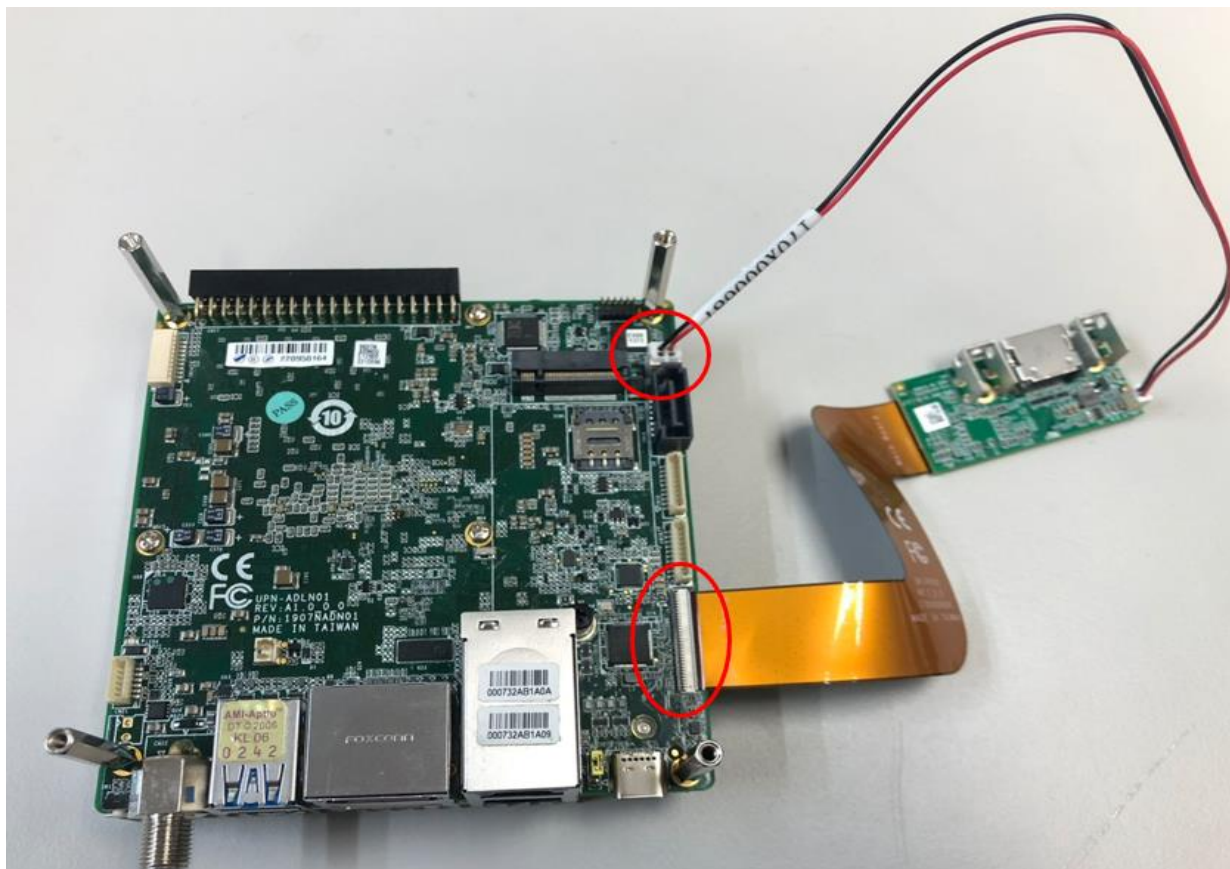
Step 2: Affix and lock the two (2) nuts(left figure) and four (4) pillars(right figure) to the board in the following sequence.



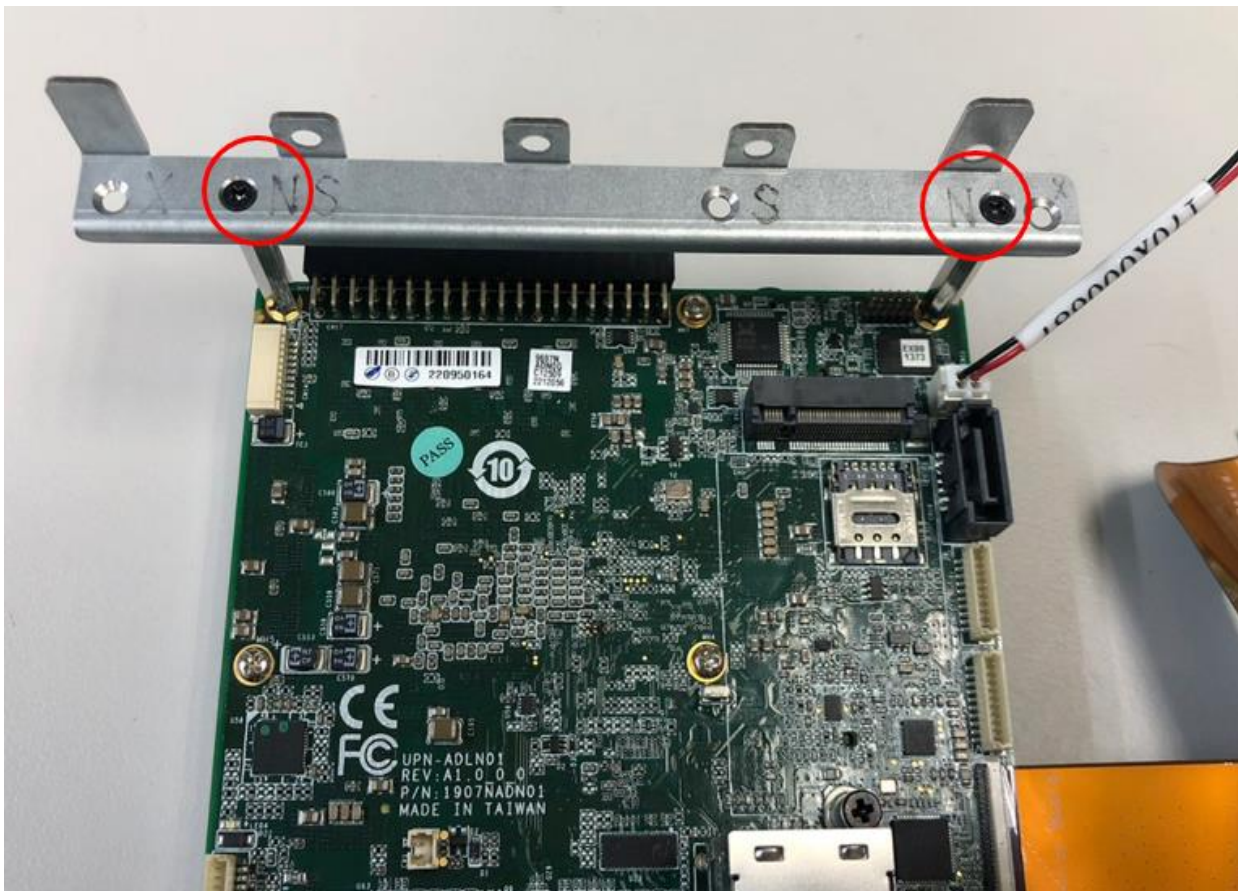
Step 3: Make sure to unlock the HDMI IN FPC connector, then plug the FPC cable into the FPC connector and power cable, noting the direction of the FPC cable.



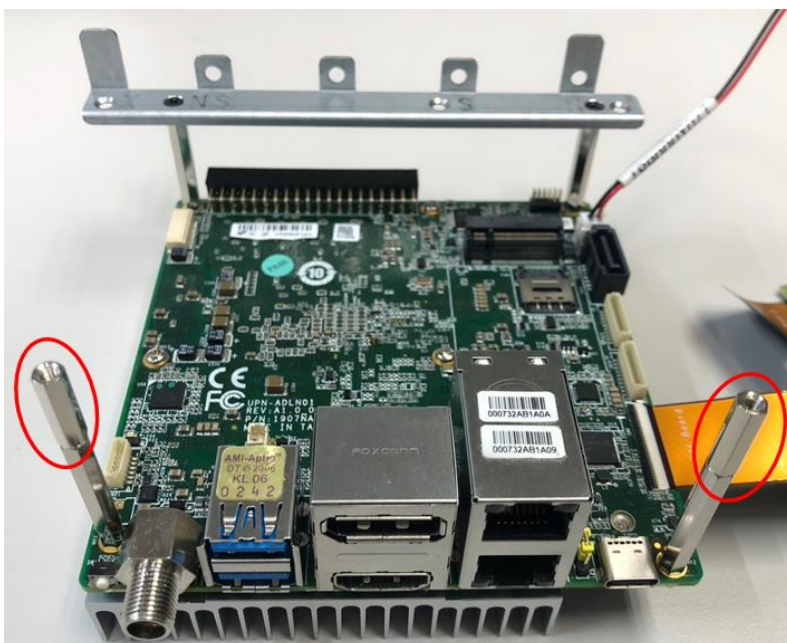
Step 4: Unlock the main board FPC connector, then plug the FPC cable and power cable into it.



Step 5: Put bracket on top of the pillars and affix and lock the Two (2) black screws. **(Applicable for customers who order bracket through optional section within product page.)**



Step 6: Affix and lock the Two (2) short pillars.



Step 7: Affix and lock the Two (2) sliver screws to the HDMI IN carrier board.

