



# SOP

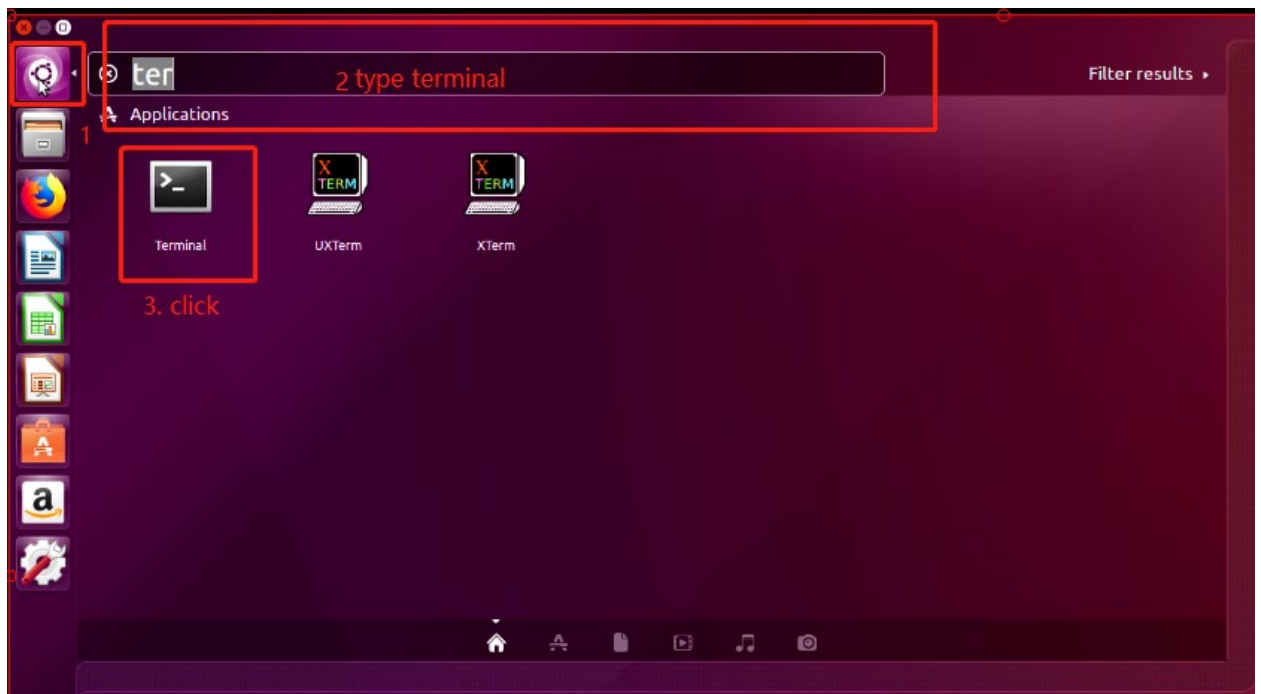
## Initialize EG25-G under Ubuntu 16.04

Sub-Title

Revision:	01	
Update Date:	13 June 2019	
Prepared For:	Aling Wu	AAEON
Prepared By:	Yiyu	IT Specialist

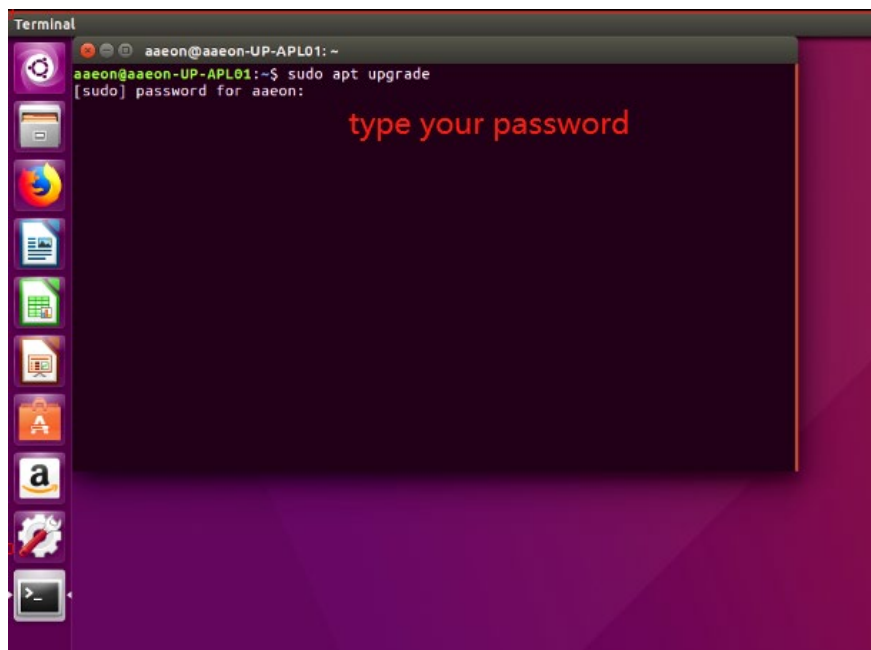
## Upgrade Ubuntu

### 1.1 Open terminal



### 1.2 Upgrade Ubuntu

sudo apt upgrade



1.3 Wait until the upgrade complete

## 2 Remove modemmanager

```
sudo apt-get purge --auto-remove modemmanager
```

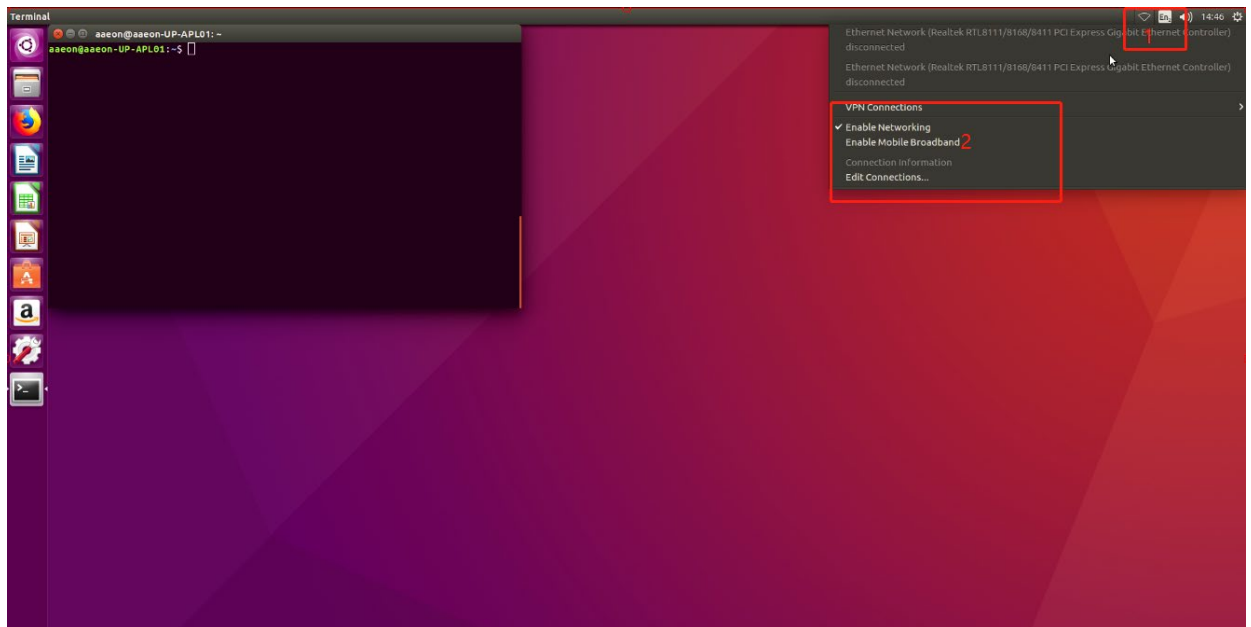
## 3 Install modemmanager using snap

```
snap install modem-manager
```

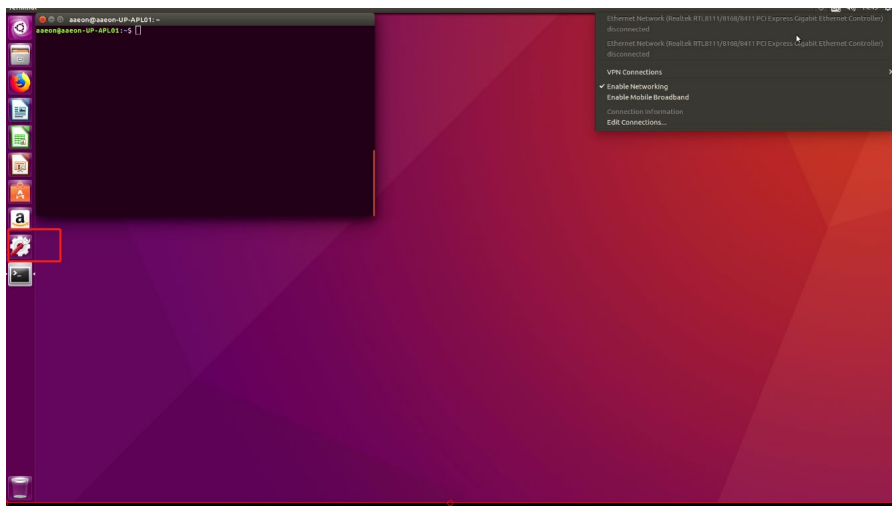
## 4. Connect your mobile network

After your system rebooted and wait for around 2 minutes.

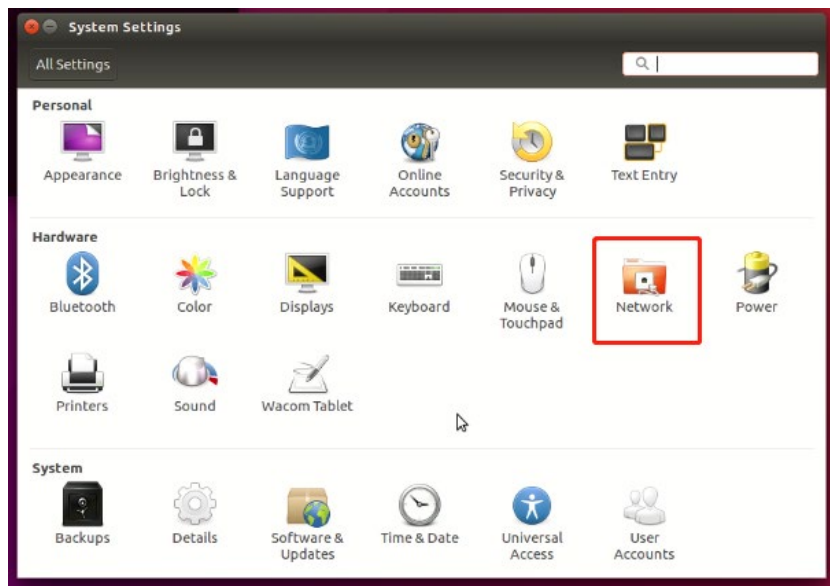
Click the network icon on the right corner, you will see the **Enable Mobile Broadband** option



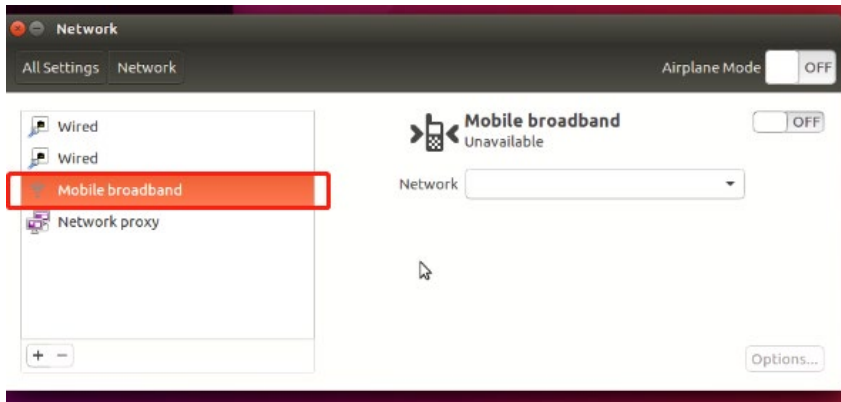
Click settings icon



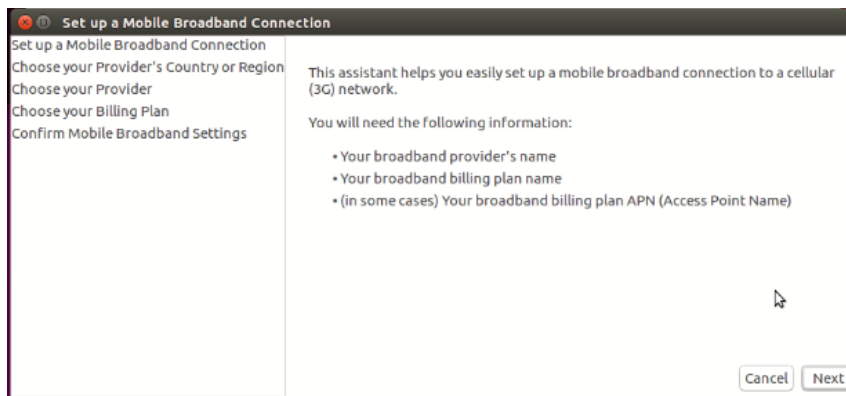
Then click Network option



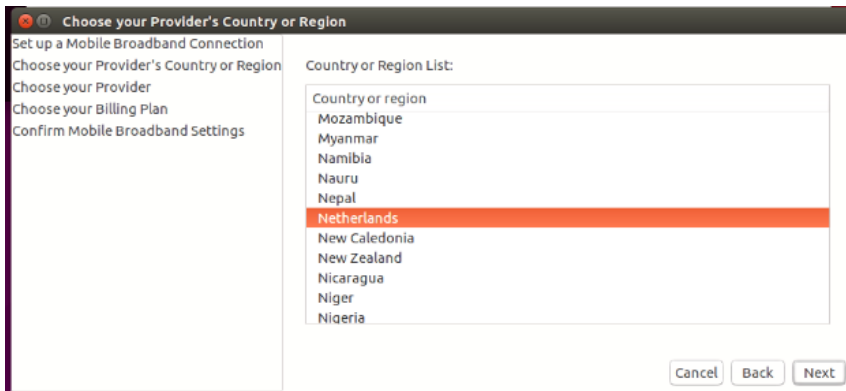
Choose mobile broadband option



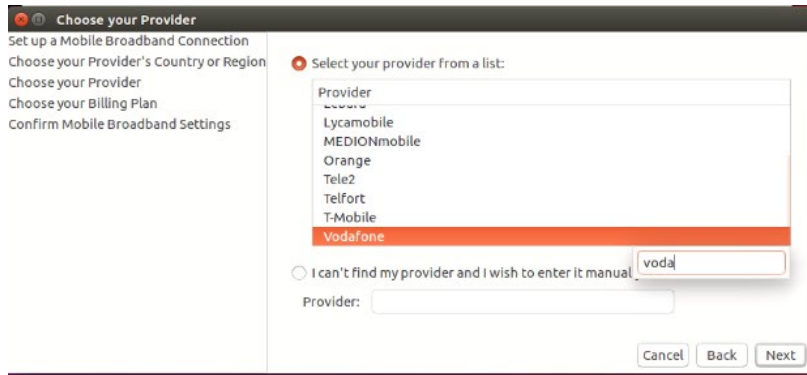
Create new mobile data connection



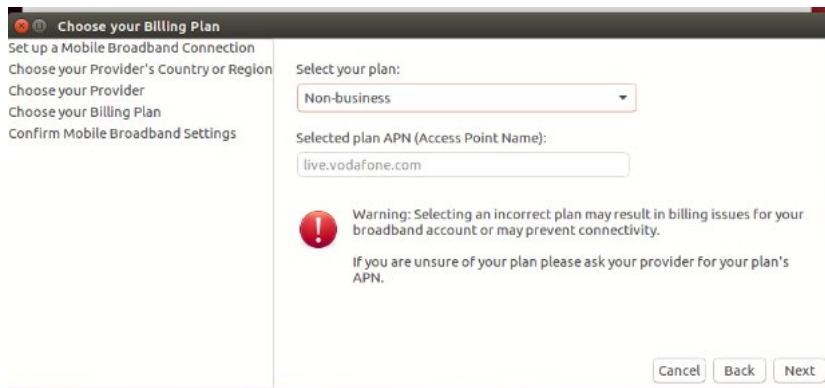
Next



Choose your country (for example, I chose Netherlands)



Choose your provider



Select your plan, normally it will be selected automatically. Then just choose Apply and your connection will be added


## 4 Custom the connection based on 4G

### 4.1 APN

You can always check your SIM card provider by google

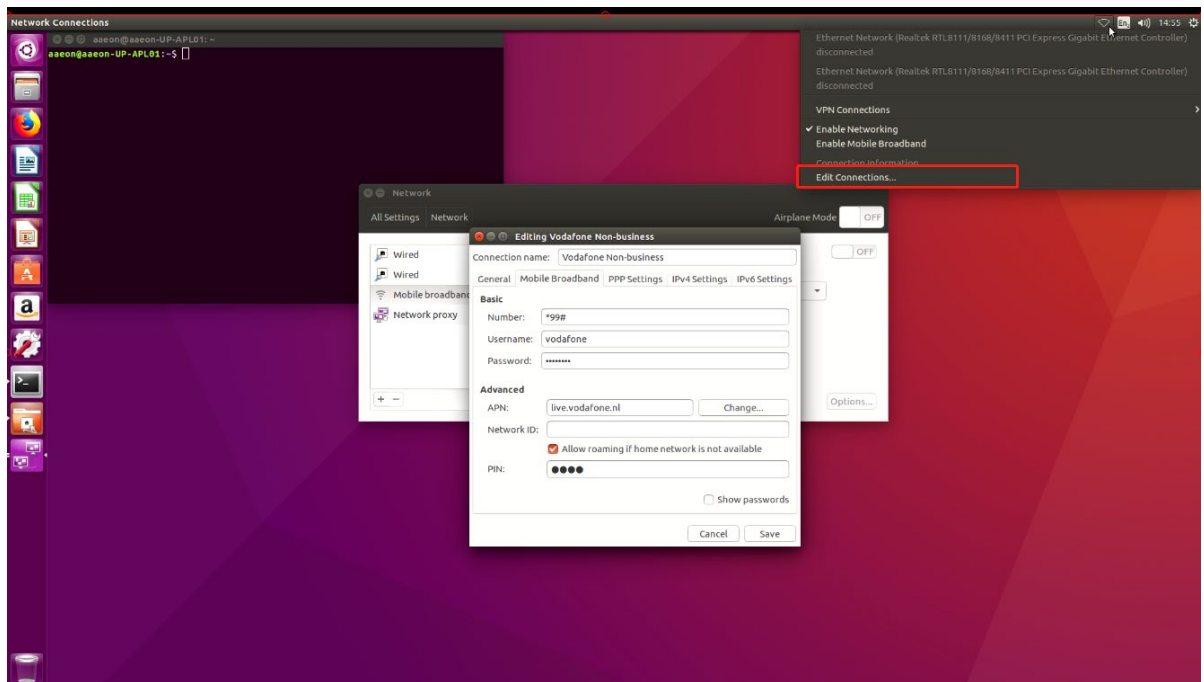
For me I checked my APN by typing **Vodafone apn Netherlands**

And you will see your configuration like below

	<p>APN : live.vodafone.com          Username : vodafone          Password : vodafone          Proxy: (leave empty)          Port: (leave empty)          MCC: 204          MNC: 04          Authentication type: PAP          Waiting time / timeout : 300 sec</p>	<p><b>for 4G</b></p> <p>APN: live.vodafone.nl          Username: vodafone          Password: vodafone</p>	<p><b>Mobile Broadband subscription: APN :</b>          office.vodafone.com  <b>Username :</b> vodafone  <b>Password :</b> vodafone</p>
---	--	---	---

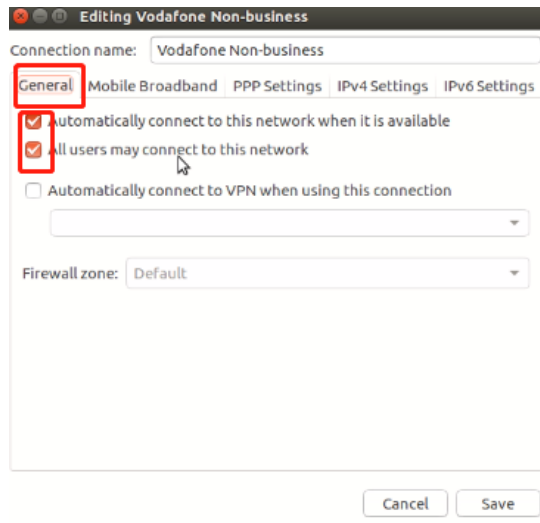
Type username and password as what your provider suggested. Please always remember that EC25-E is for **4G use** and if there is no 4G option from your provider, you can try with the default APN. In case the connection is disrupted or broken, then most probably the APN for 4G is **different**. You might need to give a call to your SIM provider (T-Mobile, Vodafone, O2, etc.) to ask for the APN for 4G.

## 4.2 Update the connection



Click the network icon in the right corner and choose edit connection. Then choose the one you just created

1. The PIN for SIM card should normally on the original card
2. Enter the APN from the step 6.1 APN
3. Go to **General** tab



4. Click save and reboot

5 After reboot and wait for around 3 minutes, the connection should work.  
Enjoy!